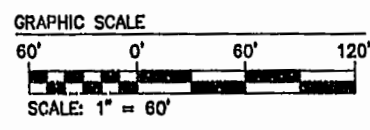
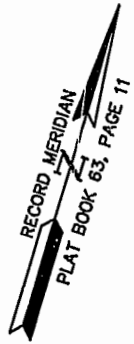
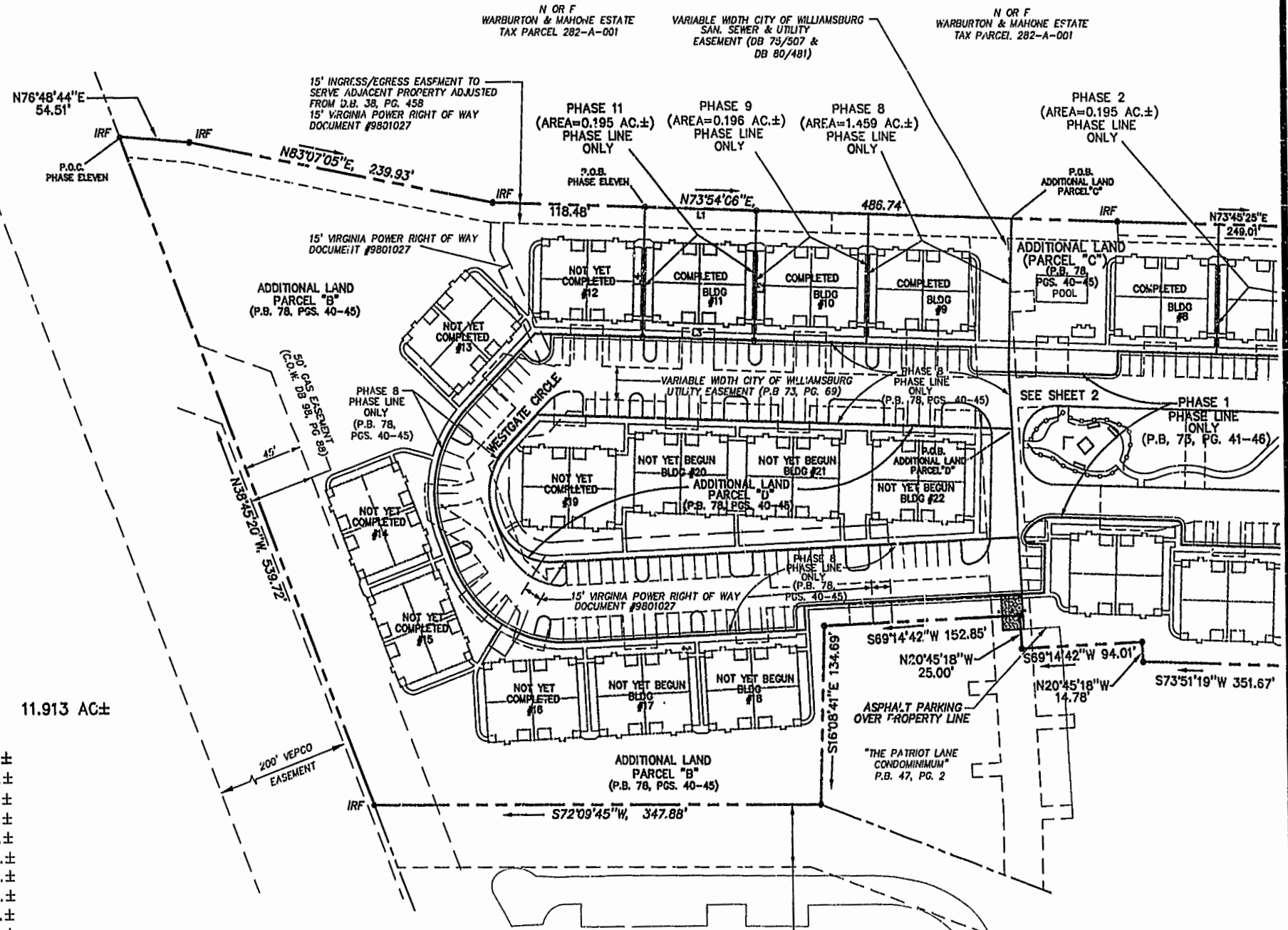


NOTE:  
 AT THE TIME OF THIS SURVEY  
 ROADS AND SIDEWALK ARE UNDER  
 CONSTRUCTION. (PROPOSED  
 LOCATION SHOWN). WATER &  
 & SANITARY SYSTEM ARE IN PLACE.



AREA	
TOTAL AREA PARCEL 1=	11.913 AC±
PHASE ELEVEN=	0.195 AC.±
PHASE TEN=	0.222 AC.±
PHASE NINE=	0.196 AC.±
PHASE EIGHT=	1.459 AC.±
PHASE SEVEN=	0.216 AC.±
PHASE SIX=	0.343 AC.±
PHASE FIVE=	0.235 AC.±
PHASE FOUR=	0.200 AC.±
PHASE THREE=	0.196 AC.±
PHASE TWO=	0.195 AC.±
PHASE ONE=	3.355 AC.±
ADDITIONAL AREA (PARCEL "B")=	3.812 AC.±
ADDITIONAL AREA (PARCEL "C")=	0.396 AC.±
ADDITIONAL AREA (PARCEL "D")=	0.893 AC.±
<b>TOTAL=</b>	<b>11.913 AC±</b>



PHASE ELEVEN LINE TABLE

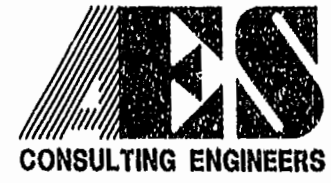
NUMBER	BEARING	DISTANCE
L1	N73°54'06"E	87.00'
L2	S16°08'41"W	97.77'
L3	S73°01'19"W	87.00'
L4	N16°08'41"W	97.84'

Williamsburg/James City County  
 2:19 pm  
 Recorded day of February 2001  
 DOCUMENT # 010177  
 [Signature] Clerk

30' CITY OF WILLIAMSBURG  
 SAN. SEWER & UTILITY  
 EASEMENT (DB 75/507 &  
 DB 80/481)

"THE PATRIOT LANE  
 CONDOMINIUM"  
 TAX PARCEL 281-01-02-A  
 P.B. 35, PG. 119

PLAT RECORDED IN  
 P.B. NO. 80, PAGE 30-35



5248 Old Towne Road, Suite 1  
 Williamsburg, Virginia 23188  
 (757) 253-0040  
 Fax (757) 220-8994

PLAT OF CONDOMINIUM  
 WESTGATE AT WILLIAMSBURG,  
 A CONDOMINIUM  
 PHASE ELEVEN  
 OWNED BY: 752 L.L.C.,  
 A VIRGINIA LIMITED LIABILITY COMPANY  
 CITY OF WILLIAMSBURG VIRGINIA



No.	DATE	REVISION / COMMENT / NOTE	BY

Designed GTW/ADS	Drawn JFS
Scale 1" = 60'	Date 1/11/01
Project No. 8395-6	
Drawing No. 3 OF 6	

01-24-01-09-46 8395P113.DWG JFS