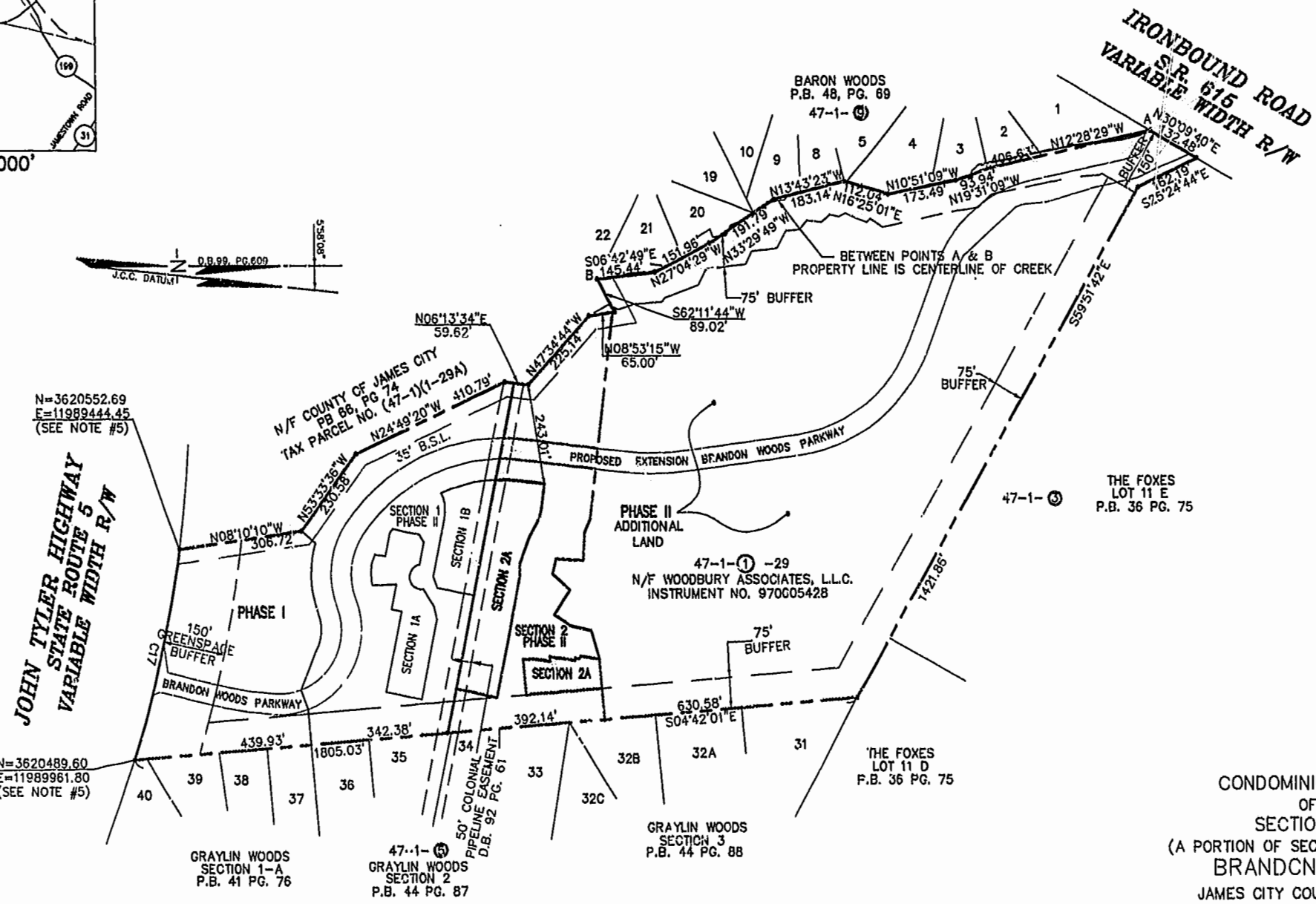
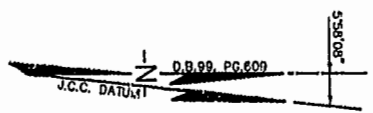


CURVE TABLE						
CURVE	LENGTH	RADIUS	TANGENT	CHORD BEARING	CHORD	DELTA
C17	521.88'	2904.79'	261.63'	N77°04'44"W	521.18'	10°17'38"



N=3620552.69
E=11989444.45
(SEE NOTE #5)

N=3620489.60
E=11989961.80
(SEE NOTE #5)

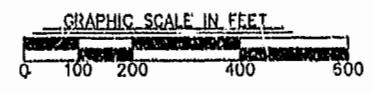
JOHN TYLER HIGHWAY
STATE ROUTE 5
VARIABLE WIDTH R/W

CONDOMINIUM PLAT
OF
SECTION 2A
(A PORTION OF SECTION 2, PHASE II)
BRANDON WOODS
JAMES CITY COUNTY, VIRGINIA
SCALE: 1"=200' DATE: 1/23/01

SHEET 1 OF 4



Engineers • Planners • Surveyors
Landscape Architects • Environmental Consultants
4029 IRONBOUND ROAD SUITE 100
WILLIAMSBURG, VA 23188
TEL (757) 253-2975 FAX(757) 229-0049



STATE OF VIRGINIA, COUNTY OF JAMES CITY
IN THE CLERK'S OFFICE OF THE CIRCUIT COURT THE PLAT SHOWN HEREON WAS PRESENTED AND ADMITTED TO RECORD AS THE LAW DIRECTS.
TESTEE: Debra A. White CLERK @ 12:15 PM
PLAT BOOK 80 PAGE 22-25



Williamsburg/James City County
12:15 PM 2 SUPERVISOR 2001
DOCUMENT # 010 001751
Debra A. White