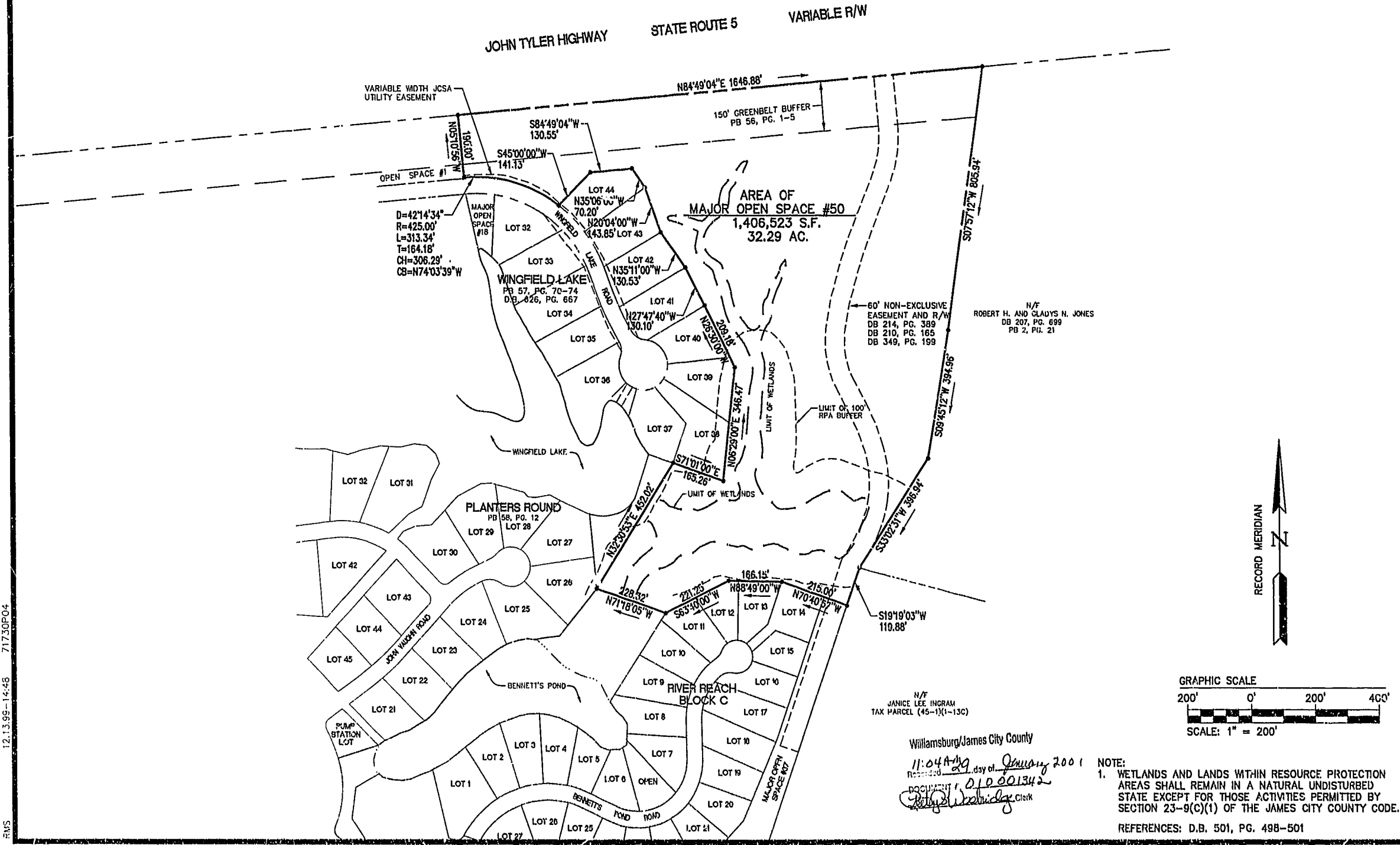


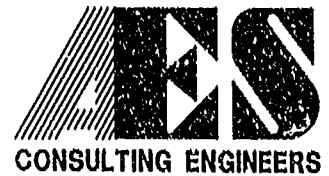
150-FOOT GREENBELT BUFFER ALONG THE PROPERTY'S ROUTE 5 FRONTAGE IS DEFINED BY THE GREENBELT CORRIDOR POLICY OF JAMES CITY COUNTY. THE "GREENBELT" BUFFERS SHALL BE UNDISTURBED AND EXCLUSIVE OF ANY LOTS, EXCEPT FOR APPROVED UTILITIES, DRAINAGE IMPROVEMENTS, JOGGING/NATURE TRAILS, COMMUNITY ENTRANCE ROADS AS SHOWN GENERALLY ON THE MASTER PLAN AND APPROPRIATE HISTORICAL, ENVIRONMENTAL, DIRECTIONAL, AND COMMUNITY IDENTIFICATION SIGNAGE AS APPROVED BY THE PLANNING COMMISSION.



Williamsburg/James City County  
 11:04 AM day of January 2001  
 DOCUMENT 010 001342  
 Robert W. Winkler, Clerk

NOTE:  
 1. WETLANDS AND LANDS WITHIN RESOURCE PROTECTION AREAS SHALL REMAIN IN A NATURAL UNDISTURBED STATE EXCEPT FOR THOSE ACTIVITIES PERMITTED BY SECTION 23-9(C)(1) OF THE JAMES CITY COUNTY CODE.  
 REFERENCES: D.B. 501, PG. 498-501

12.13.99-14:48 71730P04 RMS



5248 Olde Towne Road, Suite 1  
 Williamsburg, Virginia 23188  
 (757) 253-0040  
 Fax (757) 220-8994

COMPOSITE PLAT SHOWING MAJOR OPEN SPACE #50  
 TO BE CONVEYED TO  
 GOVERNOR'S LAND FOUNDATION  
 THE  
 GOVERNOR'S LAND  
 At Two Rivers  
 JAMES CITY COUNTY  
 VIRGINIA  
 POWHATAN DISTRICT



No.	DATE	REVISION / COMMENT / NOTE	JY

Designed VMB	Drawn RMS
Scale 1" = 200'	Date 12/15/99
Project No. 7173	
Drawing No. 4 OF 4	