

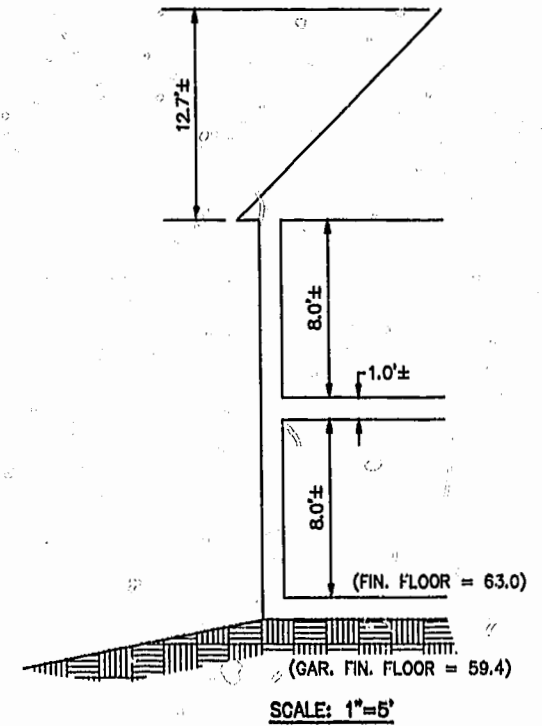
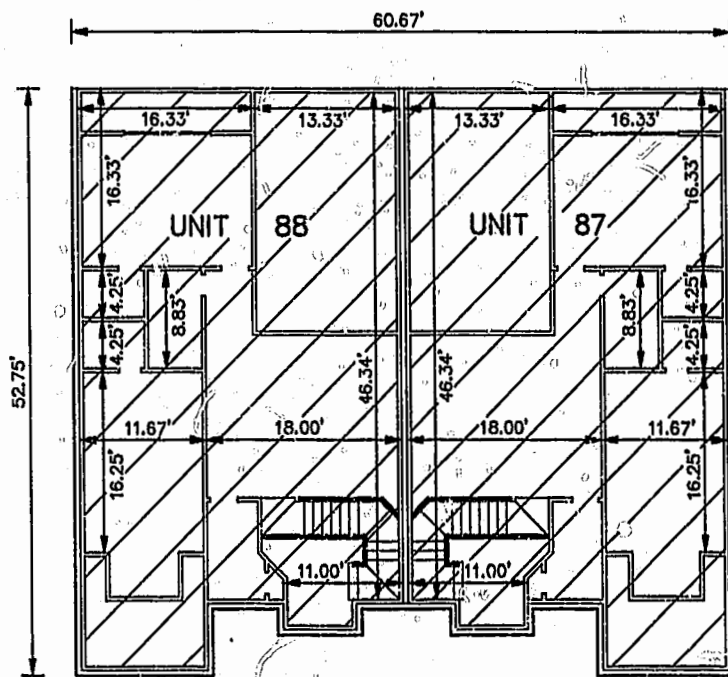
EXHIBIT B-5
 SUPPLEMENTAL CONDOMINIUM PLAN
 OF
WYNDHAM PLANTATION
 CONDOMINIUM
 WILLIAMSBURG, VIRGINIA
 SCALE: 1"=10' JANUARY 23, 2001
JOHN E. SIRINE AND ASSOCIATES, LTD.
 SURVEYORS • ENGINEERS • PLANNERS
 VIRGINIA BEACH, VIRGINIA
 (757) 486-4910

NOTES:

1. BUILDING DIMENSIONS SHOWN HEREON ARE INTERIOR DIMENSIONS. THESE DIMENSIONS ARE IN FEET AND WERE TAKEN FROM PLANS SUPPLIED ENTITLED "WYNDHAM PLANTATION AT WILLIAMSBURG, FLOOR PLANS" BY PROGRESSIVE DESIGNS DATED 11/19/98.
2. INTERIOR UNIT CONFIGURATIONS AND PARTITIONS AS DEPICTED HEREON ARE FOR THE PURPOSE OF ILLUSTRATION ONLY AND MAY NOT REPRESENT THE INTERIOR OF A UNIT AS ACTUALLY CONSTRUCTED.

SECOND FLOOR - BUILDING 14

SCALE: 1"=10'



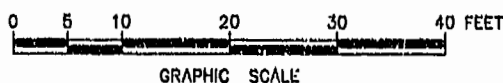
SCALE: 1"=5'

UNIT AREA

THE UNDERSIGNED CERTIFIES THAT THESE PLANS ARE ACCURATE AND COMPLY WITH THE PROVISIONS OF CODE OF VIRGINIA, SECTION 55-79.58.B AND THAT ALL UNITS OR PORTIONS THEREOF DEPICTED HEREON AND ALL COMMON ELEMENTS HAVE BEEN SUBSTANTIALLY COMPLETED.

PHASE	UNIT No.	UNIT ADDRESS	UNIT AREA
6	87	341 ZELKOVA ROAD	1,957 S.F.
6	88	345 ZELKOVA ROAD	1,957 S.F.

Williamsburg/James City County SIGNED: Jeffrey D. Williams
 JEFFREY D. WILLIAMS, L.S.



PLAT RECORDED IN
 P.D. NO. 80 PAGE 6-11

11:20 AM
 Recorded 25 day of January 2001
 Document # 010086
 Kristy B. Woodruff, Clerk
 By Claudia A. Binkholz, Deputy Clerk