

EXHIBIT B-5  
 SUPPLEMENTAL CONDOMINIUM PLAN  
 OF  
 WYNDHAM PLANTATION  
 CONDOMINIUM

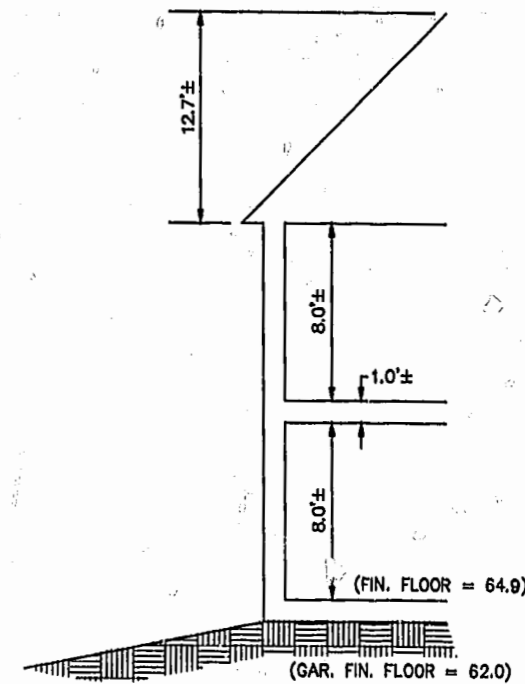
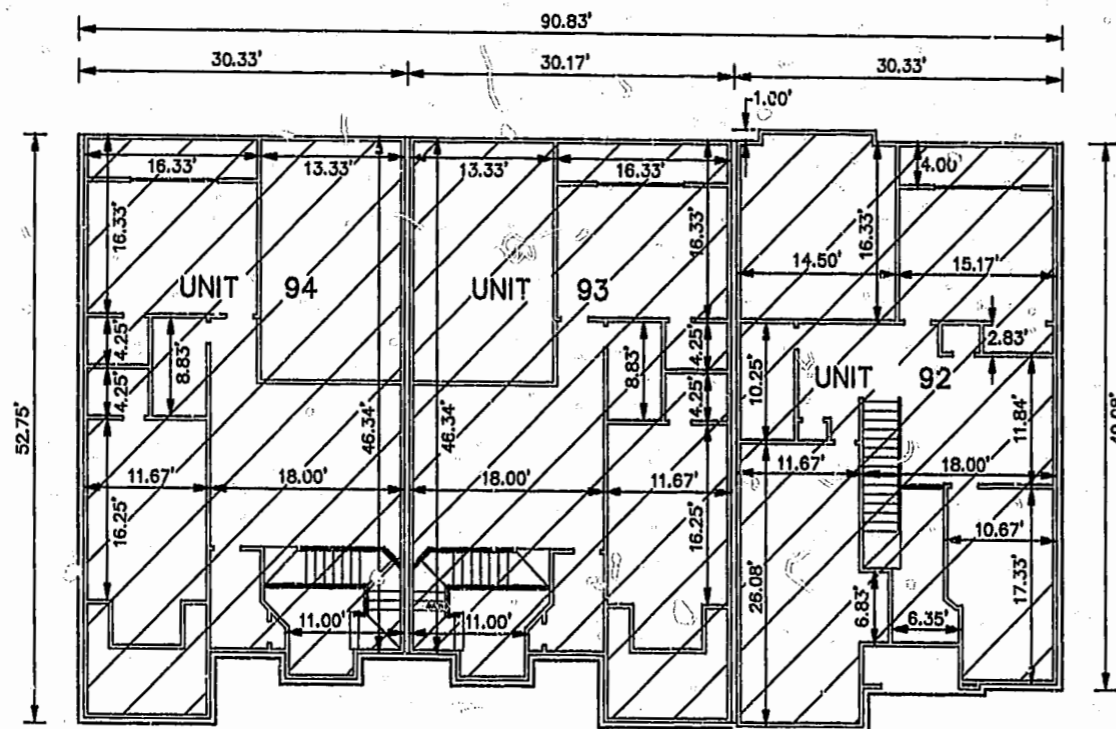
WILLIAMSBURG, VIRGINIA  
 SCALE: 1"=10' JANUARY 23, 2001  
 JOHN E. SIRINE AND ASSOCIATES, LTD.  
 SURVEYORS • ENGINEERS • PLANNERS  
 VIRGINIA BEACH, VIRGINIA  
 (757) 486-4910

NOTES:

1. BUILDING DIMENSIONS SHOWN HEREON ARE INTERIOR DIMENSIONS. THESE DIMENSIONS ARE IN FEET AND WERE TAKEN FROM PLANS SUPPLIED ENTITLED "WYNDHAM PLANTATION AT WILLIAMSBURG, FLOOR PLANS" BY PROGRESSIVE DESIGNS DATED 11/19/98.
2. INTERIOR UNIT CONFIGURATIONS AND PARTITIONS AS DEPICTED HEREON ARE FOR THE PURPOSE OF ILLUSTRATION ONLY AND MAY NOT REPRESENT THE INTERIOR OF A UNIT AS ACTUALLY CONSTRUCTED.

SECOND FLOOR -- BUILDING 16

SCALE: 1"=10'



SCALE: 1"=5'

UNIT AREA

| PHASE | UNIT No. | UNIT ADDRESS     | UNIT AREA  |
|-------|----------|------------------|------------|
| 6     | 92       | 412 ZELKOVA ROAD | 1,997 S.F. |
| 6     | 93       | 416 ZELKOVA ROAD | 2,101 S.F. |
| 6     | 94       | 420 ZELKOVA ROAD | 2,101 S.F. |

THE UNDERSIGNED CERTIFIES THAT THESE PLANS ARE ACCURATE AND COMPLY WITH THE PROVISIONS OF CODE OF VIRGINIA, SECTION 55-79.58.B AND THAT ALL UNITS OR PORTIONS THEREOF DEPICTED HEREON AND ALL COMMON ELEMENTS HAVE BEEN SUBSTANTIALLY COMPLETED.

Williamsburg/James City County

SIGNED:

*Jeffrey D. Williams*

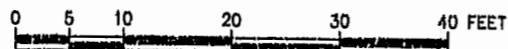
JEFFREY D. WILLIAMS, L.S.

11:20 AM 25 day of January 2001  
 Recorded

DOCUMENT # 21006

By *Claudia H. ...* Clerk

*by Claudia H. ...*



GRAPHIC SCALE

PLAT RECORDED IN  
 P.L. NO. 80, PAGE 6-11