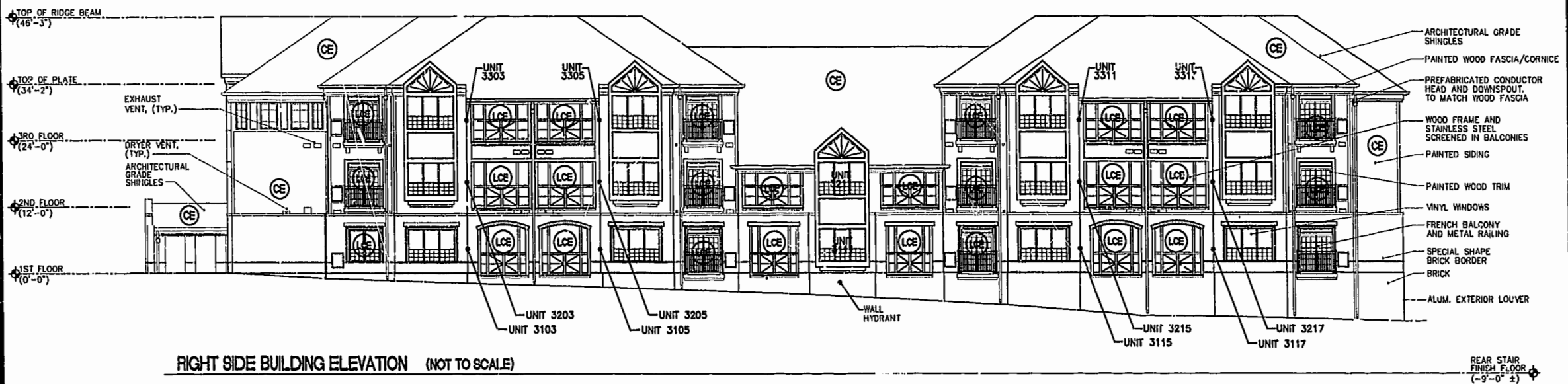


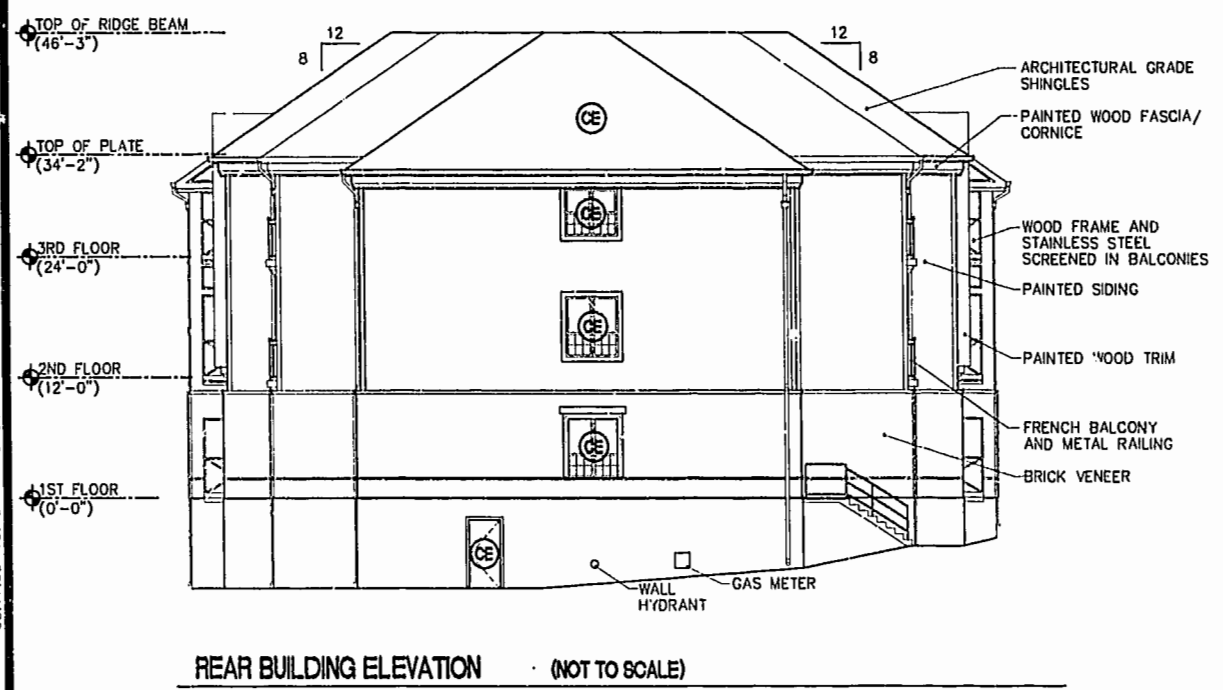
NOTE:
COMMON ELEMENTS ARE NOT YET COMPLETED.

⊙ COMMON ELEMENT
⊙ LIMITED COMMON ELEMENT

NOTE:
ALL BUILDING DIMENSIONS AND DETAILS SHOWN
ARE PER PLANS BY CMSS ARCHITECTS, P.C.



RIGHT SIDE BUILDING ELEVATION (NOT TO SCALE)



REAR BUILDING ELEVATION (NOT TO SCALE)

- NOTES: *
1. THE LOWER (HORIZONTAL) BOUNDARY OF EACH UNIT IN BUILDING 3000 SHOWN ON THE PLAT AS LOCATED ON PHASE IX IS THE HORIZONTAL PLANE OF THE UPPER SURFACE OF THE FLOOR SLAB OR CONCRETE FLOOR TOPPING OF THE UNIT.
 2. THE UPPER (HORIZONTAL) BOUNDARY OF EACH OF THE UNITS IN BUILDING 3000 SHOWN ON THE PLAT AS LOCATED ON PHASE IX IS THE HORIZONTAL PLANE(S) OF THE LOWER SURFACE OF THE FLOOR JOISTS (OR, IN THE CASE OF THIRD FLOOR UNITS, THE LOWER SURFACE OF THE BOTTOM CHORD OF THE ROOF TRUSSES) CONSTITUTING A PART OF THE CEILING OF THE UNIT.
- * SEE ELEVENTH AMENDMENT TO DECLARATION OF CONDOMINIUM OF MANOR CLUB AT FORD'S COLONY, A CONDOMINIUM (PHASE IX CONDOMINIUM DECLARATION) FOR A MORE DETAILED DESCRIPTION.

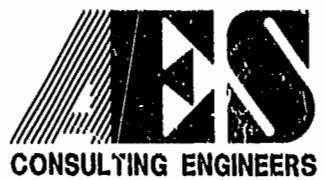
CERTIFICATION FOR PLANS

"THE UNDERSIGNED, A LICENSED LAND SURVEYOR, DOES HEREBY CERTIFY THAT THESE PLANS (AS SUBMITTED BY CMSS ARCHITECTS, P.C., REVISION DATE MARCH 15, 2000) DEPICT IMPROVEMENTS TO BE CONSTRUCTED (BUT WHICH ARE NOT YET COMPLETED) AND, IF THE IMPROVEMENTS ARE CONSTRUCTED IN ACCORDANCE WITH THESE PLANS, THESE PLANS CONFORM TO THE REQUIREMENTS OF VA. CODE ANN. SUBSECTIONS 55-79.58 B AND F IN SO FAR AS THEY RELATE TO CHARACTERISTICS OF THE CONDOMINIUM TO BE DEPICTED ON SUCH PLANS. UNITS AND COMMON ELEMENTS DEPICTED HEREON ARE NOT NOT YET COMPLETED; IT BEING UNDERSTOOD THAT SUCH UNITS ARE BEING SUBJECTED TO A TIME-SHARE INSTRUMENT PURSUANT TO VA. CODE ANN. SECTION 55-367 AND THUS VA. CODE ANN. SUBSECTION 55-79.58 D APPLIES."

A. D. Sebert
A. D. SEBERT, L.S. 7/11/00
DATE



08.17.00-13:40 MCPP09.DWG JFS



5248 Olde Towne Road, Suite 1
Williamsburg, Virginia 23188
(757) 253-0040
Fax (757) 220-8994

EXHIBIT A-3

PLAT OF CONDOMINIUM
MANOR CLUB
AT FORD'S COLONY
PHASE IX

OWNER/DEVELOPER: MARRIOTT OWNERSHIP RESORTS, INC.
POWHATAN DISTRICT JAMES CITY COUNTY VIRGINIA

PLAT RECORDED IN
P.L. NO. 79, PAGE 92-101

Williamsburg/James City County			
10:02 AM	18 day of January 2001	DOCUMENT # 010000652	
No. DATE REVISION / COMMENT / NOTE BY			

Designed ADS	Drawn JFS
Scale NOTED	Date 07/11/00
Project No. 7738-11	
Drawing No. 9 OF 10	