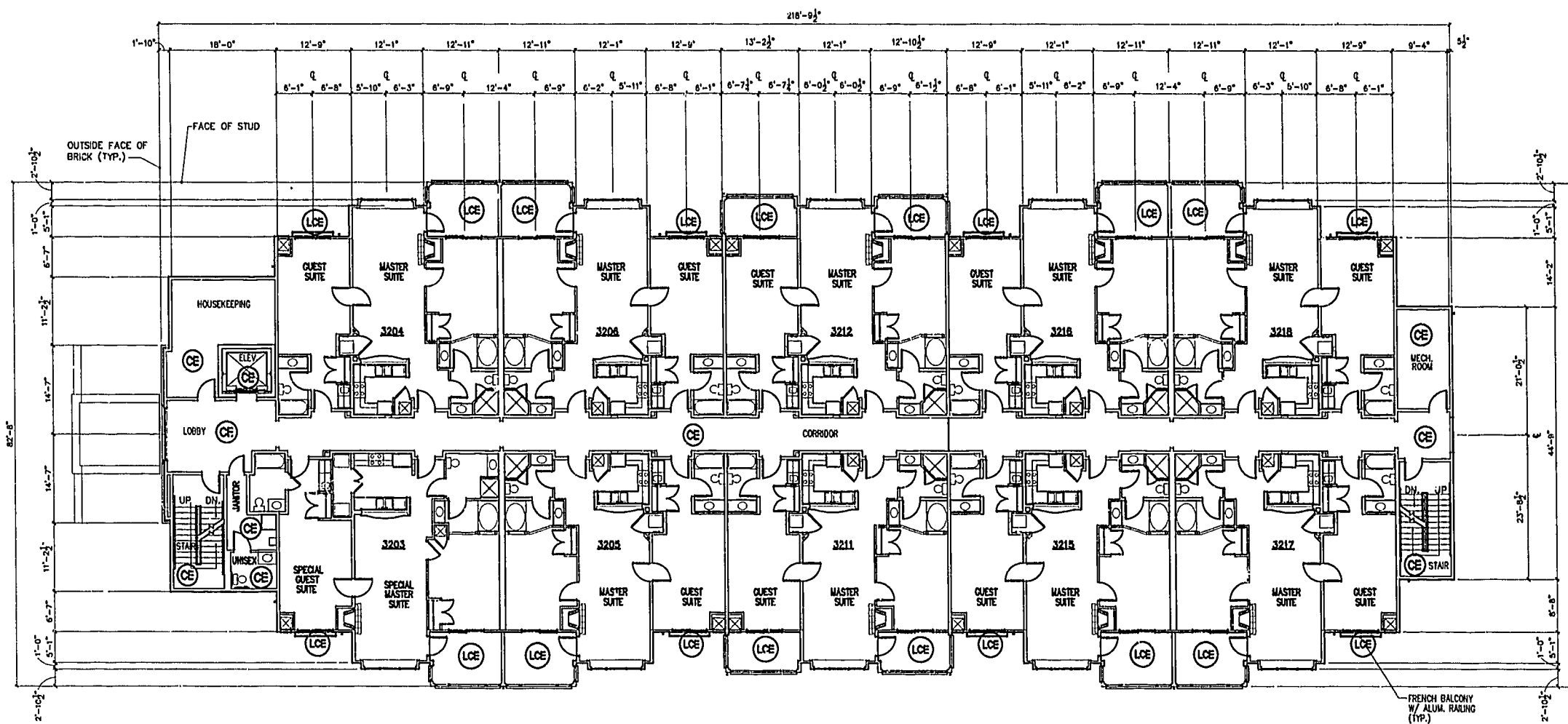


NOTE:  
ALL BUILDING DIMENSIONS AND DETAILS SHOWN  
ARE PER PLANS BY CMSS ARCHITECTS, P.C.

⊙ COMMON ELEMENT

NOTE:  
COMMON ELEMENTS ARE NOT YET COMPLETED.

⊙ LIMITED COMMON ELEMENT



**SECOND FLOOR PLAN**  
(NOT TO SCALE)

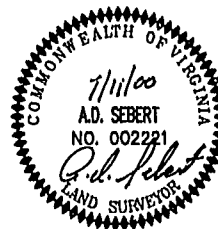
NOTES: \*

1. THE LOWER (HORIZONTAL) BOUNDARY OF EACH UNIT IN BUILDING 3000 SHOWN ON THE PLAT AS LOCATED ON PHASE IX IS THE HORIZONTAL PLANE OF THE UPPER SURFACE OF THE FLOOR SLAB OR CONCRETE FLOOR TOPPING OF THE UNIT.
2. THE UPPER (HORIZONTAL) BOUNDARY OF EACH OF THE UNITS IN BUILDING 3000 SHOWN ON THE PLAT AS LOCATED ON PHASE IX IS THE HORIZONTAL PLANE(S) OF THE LOWER SURFACE OF THE FLOOR JOISTS (OR, IN THE CASE OF THIRD FLOOR UNITS, THE LOWER SURFACE OF THE BOTTOM CHORD OF THE ROOF TRUSSES) CONSTITUTING A PART OF THE CEILING OF THE UNIT.

\* SEE ELEVENTH AMENDMENT TO DECLARATION OF CONDOMINIUM OF MANOR CLUB AT FORD'S COLONY, A CONDOMINIUM (PHASE IX CONDOMINIUM DECLARATION) FOR A MORE DETAILED DESCRIPTION.

CERTIFICATION FOR PLANS

"THE UNDERSIGNED, A LICENSED LAND SURVEYOR, DOES HEREBY CERTIFY THAT THESE PLANS (AS SUBMITTED BY CMSS ARCHITECTS, P.C., REVISION DATE MARCH 15, 2000) DEPICT IMPROVEMENTS TO BE CONSTRUCTED (BUT WHICH ARE NOT YET COMPLETED) AND, IF THE IMPROVEMENTS ARE CONSTRUCTED IN ACCORDANCE WITH THESE PLANS, THESE PLANS CONFORM TO THE REQUIREMENTS OF VA. CODE ANN. SUBSECTIONS 55-79.58 B AND F IN SO FAR AS THEY RELATE TO CHARACTERISTICS OF THE CONDOMINIUM TO BE DEPICTED ON SUCH PLANS. UNITS AND COMMON ELEMENTS DEPICTED HEREON ARE NOT NOT YET COMPLETED; IT BEING UNDERSTOOD THAT SUCH UNITS ARE BEING SUBJECT TO A TIME-SHARE INSTALLMENT PURSUANT TO VA. CODE ANN. SECTION 55-367 AND THUS VA. CODE ANN. SUBSECTION 55-79.58, D APPLIES."



*A.D. Sebert*  
A. D. SEBERT, L.S.      7/11/00  
DATE

MCP09P03.DWG 08.17.00-13:28 JFS

EXHIBIT A-3

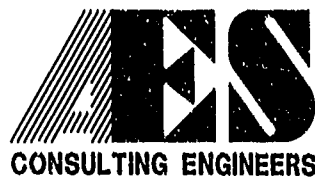
PLAT OF CONDOMINIUM  
MANOR CLUB  
AT FORD'S COLONY  
PHASE IX

OWNER/DEVELOPER: MARRIOTT OWNERSHIP RESORTS, INC.  
POWATAN DISTRICT      JAMES CITY COUNTY      VIRGINIA

PLAT RECORDED IN  
P.T. NO. 71 PAGE 92-101

Williamsburg/James City County	
10:08 AM	10 day of January 2001
DOCUMENT # 01000652	
<i>Subst. Indulgence</i>	
No.	DATE
REVISION / COMMENT / NOTE	
BY	

Designed	Drawn
ADS	JFS
Scale	Date
NOTED	7/11/00
Project No.	
7739-11	
Drawing No.	
3 OF 10	



5248 Olde Towne Road, Suite 1  
Williamsburg, Virginia 23188  
(757) 253-0040  
Fax (757) 220-8994