

**EXHIBIT B-4**  
**SUPPLEMENTAL CONDOMINIUM PLATS**  
**OF**  
**WYNDHAM PLANTATION**  
**CONDOMINIUM**

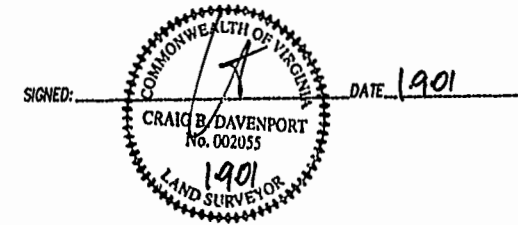
WILLIAMSBURG, VIRGINIA

DATE: JANUARY 9, 2001 SCALE: 1"=100'

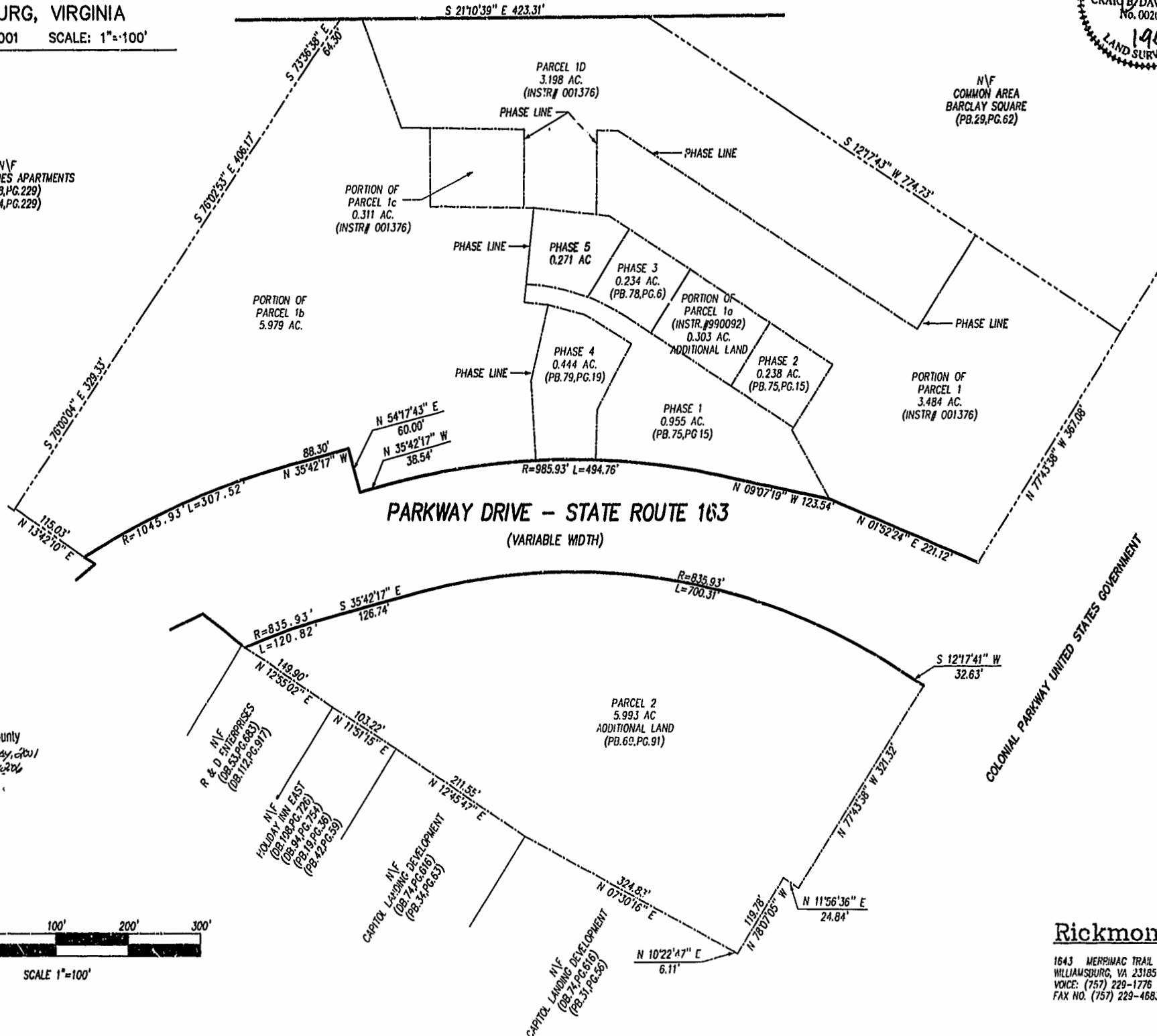
**MERRIMAC TRAIL - STATE ROUTE 143**  
 (FORMERLY STATE ROUTE 168)

Book 79 Page 85

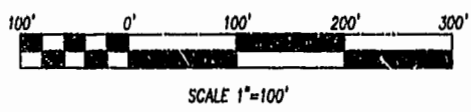
I HEREBY CERTIFY THAT THIS PLAT IS ACCURATE AND THAT IT COMPLIES WITH SECTION 55-79.58(A) OF THE VIRGINIA CONDOMINIUM ACT AS AMENDED AND THAT ALL UNITS OR PORTIONS THEREOF DEPICTED HEREON HAVE BEEN SUBSTANTIALLY COMPLETED EXCEPT AS OTHERWISE NOTED.



N/F  
 COLONIAL PINES APARTMENTS  
 (OB. 48, PG. 229)  
 (OB. 44, PG. 229)



PLAT RECORDED IN  
 P.B. NO. 79 PAGE 85-86  
 Williamsburg/James City County  
 Recorded by City of Williamsburg, VA  
 DOCUMENT # 010238  
 1/20/01  
 [Signature]



**Rickmond Engineering, Inc.**  
 1643 MERRIMAC TRAIL  
 WILLIAMSBURG, VA 23185  
 VOICE: (757) 229-1776  
 FAX NO. (757) 229-4683  
 ENGINEERING SURVEYING  
 LAND PLANNING  
 www.rickmond.com