

EXHIBIT B-3 SUPPLEMENTAL CONDOMINIUM PLATS OF WYNDHAM PLANTATION CONDOMINIUM

WILLIAMSBURG, VIRGINIA
DATE: DECEMBER 6, 2000 SCALE: 1"=100'

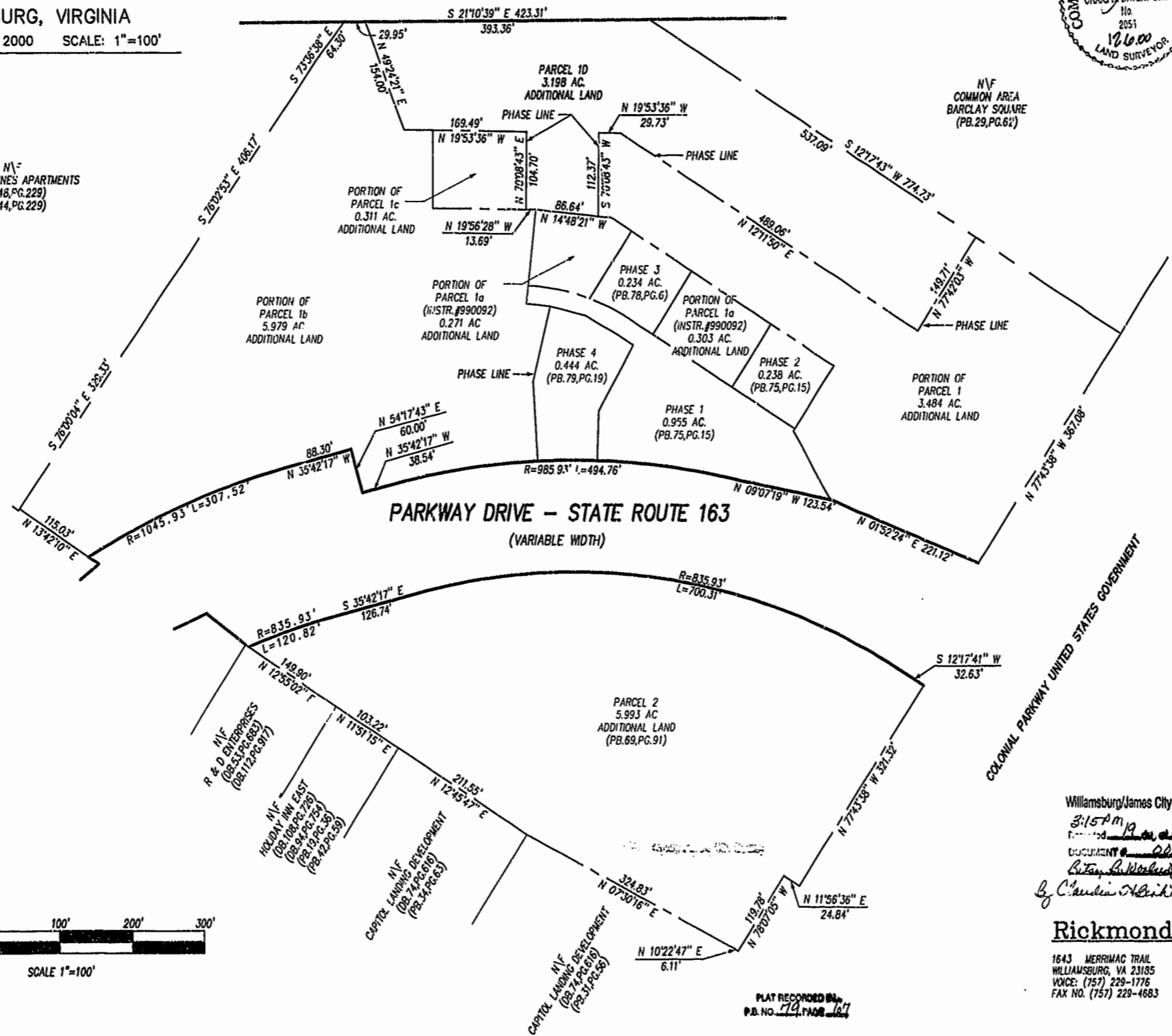
MERRIMAC TRAIL - STATE ROUTE 143 (FORMERLY STATE ROUTE 168)

I HEREBY CERTIFY THAT THIS PLAT IS ACCURATE AND THAT IT COMPLIES WITH SECTION 55-79.58(A) OF THE VIRGINIA CONDOMINIUM ACT AS AMENDED AND THAT ALL UNITS OR PORTIONS THEREOF DEPICTED HEREON HAVE BEEN SUBSTANTIALLY COMPLETED EXCEPT AS OTHERWISE NOTED.



SIGNED: _____ DATE: 12/6/00

N/V
COLONIAL PINES APARTMENTS
(DB. 48, PG. 229)
(DB. 44, PG. 229)



N/V
COMMON AREA
BARCLAY SQUARE
(PB. 29, PG. 62)

PORTION OF
PARCEL 1
3.484 AC.
ADDITIONAL LAND

PORTION OF
PARCEL 1b
5.979 AC.
ADDITIONAL LAND

PORTION OF
PARCEL 1c
0.311 AC.
ADDITIONAL LAND

PORTION OF
PARCEL 1a
(INSTR. #990092)
0.271 AC.
ADDITIONAL LAND

PARCEL 1D
3.198 AC.
ADDITIONAL LAND

PHASE 4
0.444 AC.
(PB. 79, PG. 19)

PHASE 1
0.955 AC.
(PB. 75, PG. 15)

PHASE 3
0.234 AC.
(PB. 78, PG. 6)

PORTION OF
PARCEL 1a
(INSTR. #990092)
0.303 AC.
ADDITIONAL LAND

PHASE 2
0.238 AC.
(PB. 75, PG. 15)

PARCEL 2
5.993 AC.
ADDITIONAL LAND
(PB. 69, PG. 91)

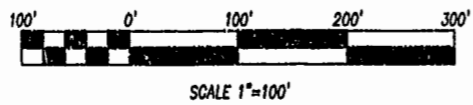
M/F
R & D ENTERPRISES
(DB. 53, PG. 683)
(DB. 112, PG. 917)

M/F
HOLIDAY INN EAST
(DB. 108, PG. 729)
(PB. 19, PG. 38)
(PB. 42, PG. 39)

M/F
CAPitol LANDING DEVELOPMENT
(DB. 74, PG. 616)
(PB. 34, PG. 63)

M/F
CAPitol LANDING DEVELOPMENT
(DB. 74, PG. 616)
(PB. 31, PG. 36)

COLONIAL PARKWAY UNITED STATES GOVERNMENT



SCALE 1"=100'

Williamsburg/James City County
3:15 PM
Recorded 19 Dec 2000
DOCUMENT # 001376

Claudia H. Berkley, Dep. Clerk

Rickmond Engineering, Inc.

1643 MERRIMAC TRAIL
WILLIAMSBURG, VA 23185
VOICE: (757) 229-1776
FAX NO. (757) 229-4683

ENGINEERING
SURVEYING
LAND PLANNING
www.rickmond.com

PLAT RECORDED IN
P.B. NO. 79 PAGE 67