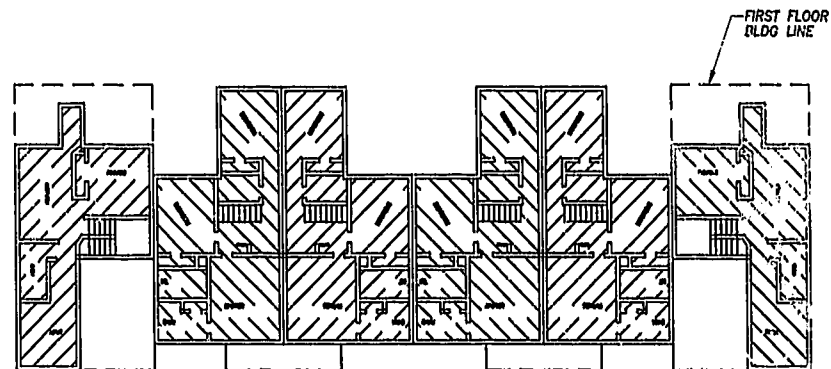
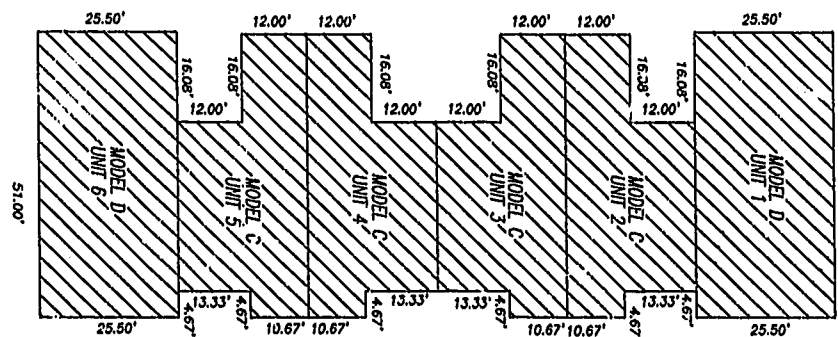


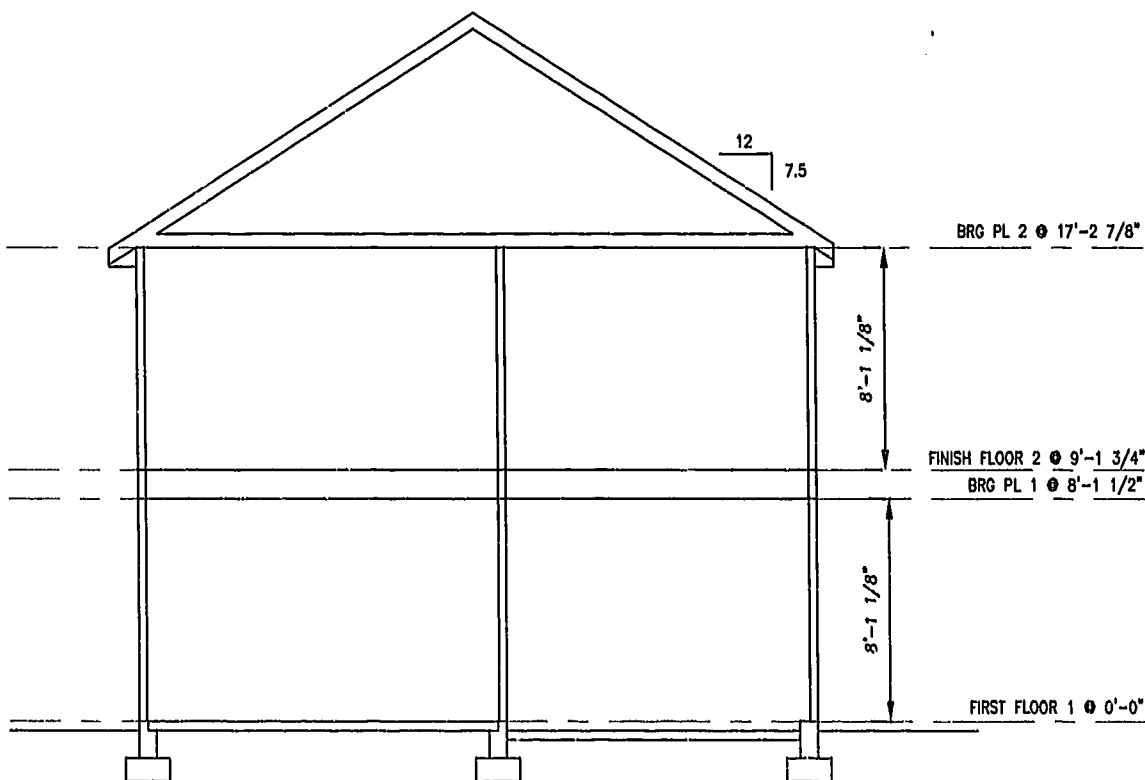
NOTE:  
ALL BUILDING DIMENSIONS SHOWN ARE EXTERIOR DIMENSIONS



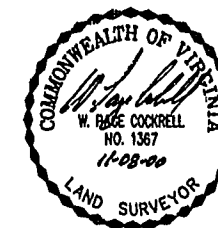
SECOND FLOOR



FIRST FLOOR



TYPICAL BUILDING SECTION



THE UNDERSIGNED CERTIFIES THAT THESE PLANS ARE ACCURATE AND COMPLY WITH THE PROVISIONS OF CODE OF VIRGINIA, SECTION 55-79.58.B AND THAT ALL UNITS OR PORTIONS THEREOF DEPICTED HEREON AND ALL COMMON ELEMENTS HAVE BEEN SUBSTANTIALLY COMPLETED.

SIGNED: *W. Page Cockrell*  
W. PAGE COCKRELL, L.S.

EXHIBIT B-6

**SUPPLEMENTAL CONDOMINIUM PLAT**  
**OF**  
**CROMWELL RIDGE CONDOMINIUM**  
**JAMES CITY COUNTY, VIRGINIA**

DATE: 11/08/00	SHEET 3 OF 5	SCALE: 1"=20'
PROJECT NO: 30807.00		DRAWN BY: SAA

LEGEND

UNIT AREA

GRAPHIC SCALE



SCALE: 1"=20'

PLAT RECORDED IN  
P.B. NO. 79 PAGE 38, 42

Williamsburg/James City County  
11:58 AM  
Recorded 16 day of Nov. 2000  
DOCUMENT #... 000021268  
By *Christina H. Binkley* Clerk  
By *Christina H. Binkley* Dep. Clerk

**VHB** Vanasse Hangen Brustlin, Inc.  
Transportation Land Development Environmental Services  
11832 Rock Landing Drive, Suite 203  
Newport News, Virginia 23606  
(757) 873-3386 • FAX (757) 873-0757