

**SECOND FLOOR BUILDING 17**

DATE 79 PAGE 22

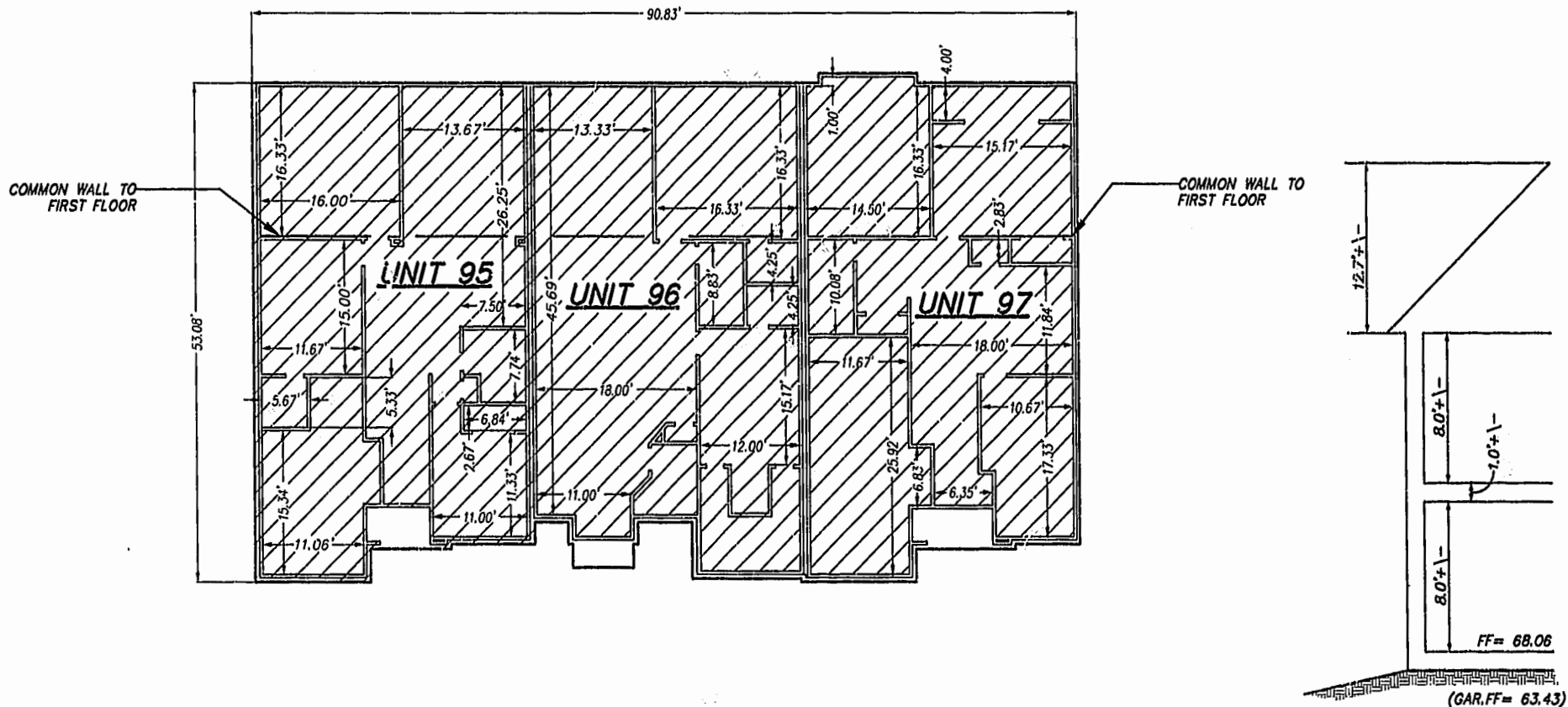
**EXHIBIT B-2  
SUPPLEMENTAL CONDOMINIUM PLANS  
OF**

**WYNDHAM PLANTATION  
CONDOMINIUM**

WILLIAMSBURG, VIRGINIA

DATE: OCTOBER 19, 2000 SCALE: 1"=10'

SCALE: 1" = 10'



**NOTES:**

- 1) BUILDING DIMENSIONS SHOWN HEREON ARE INTERIOR DIMENSIONS. THESE DIMENSIONS ARE IN FEET AND WERE TAKEN FROM PLANS SUPPLIED ENTITLED "WYNDHAM PLANTATION AT WILLIAMSBURG, FLOOR PLANS" BY PROGRESSIVE DESIGNS DATED 11/19/98
- 2) INTERIOR UNIT CONFIGURATIONS AND PARTITIONS AS DEPICTED HEREON ARE FOR THE PURPOSE OF ILLUSTRATION ONLY AND MAY NOT REPRESENT THE INTERIOR OF A UNIT AS ACTUALLY CONSTRUCTED.

PHASE	UNIT No.	UNIT ADDRESS	UNIT AREA
4	95	424 ZELKOVA DRIVE	1,799 S.F.
4	96	428 ZELKOVA DRIVE	1,957 S.F.
4	97	432 ZELKOVA DRIVE	1,853 S.F.

I HEREBY CERTIFY THAT THIS PLAN IS ACCURATE AND THAT IT COMPLIES WITH SECTION 55-79.5B(B) OF THE VIRGINIA CONDOMINIUM ACT AS AMENDED AND THAT ALL UNITS OR PORTIONS THEREOF DEPICTED HEREON HAVE BEEN SUBSTANTIALLY COMPLETED EXCEPT AS OTHERWISE NOTED.

SIGNED: \_\_\_\_\_



DATE: 10.19.00

Williamsburg/James City County

11:19 AM Recorded 16 day of Nov 2000

DOCUMENT # 001197

Betty B. Woodbury, Clerk  
By Claudia H. ...

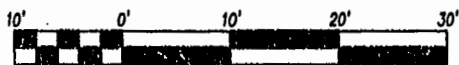
**Rickmond Engineering, Inc.**

1643 Merrimac Trail  
Williamsburg VA 23185  
Voice: (757) 229-1776  
Fax No. (757) 229-4683

Engineering  
Surveying  
Land Planning  
www.rickmond.com

SHEET 4 OF 4

00107-200



SCALE 1"=10'