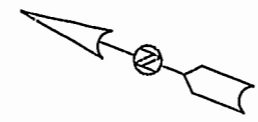


EXHIBIT B-2 SUPPLEMENTAL CONDOMINIUM PLATS OF WYNDHAM PLANTATION CONDOMINIUM

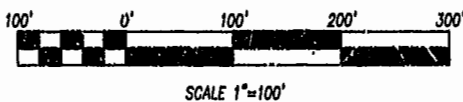
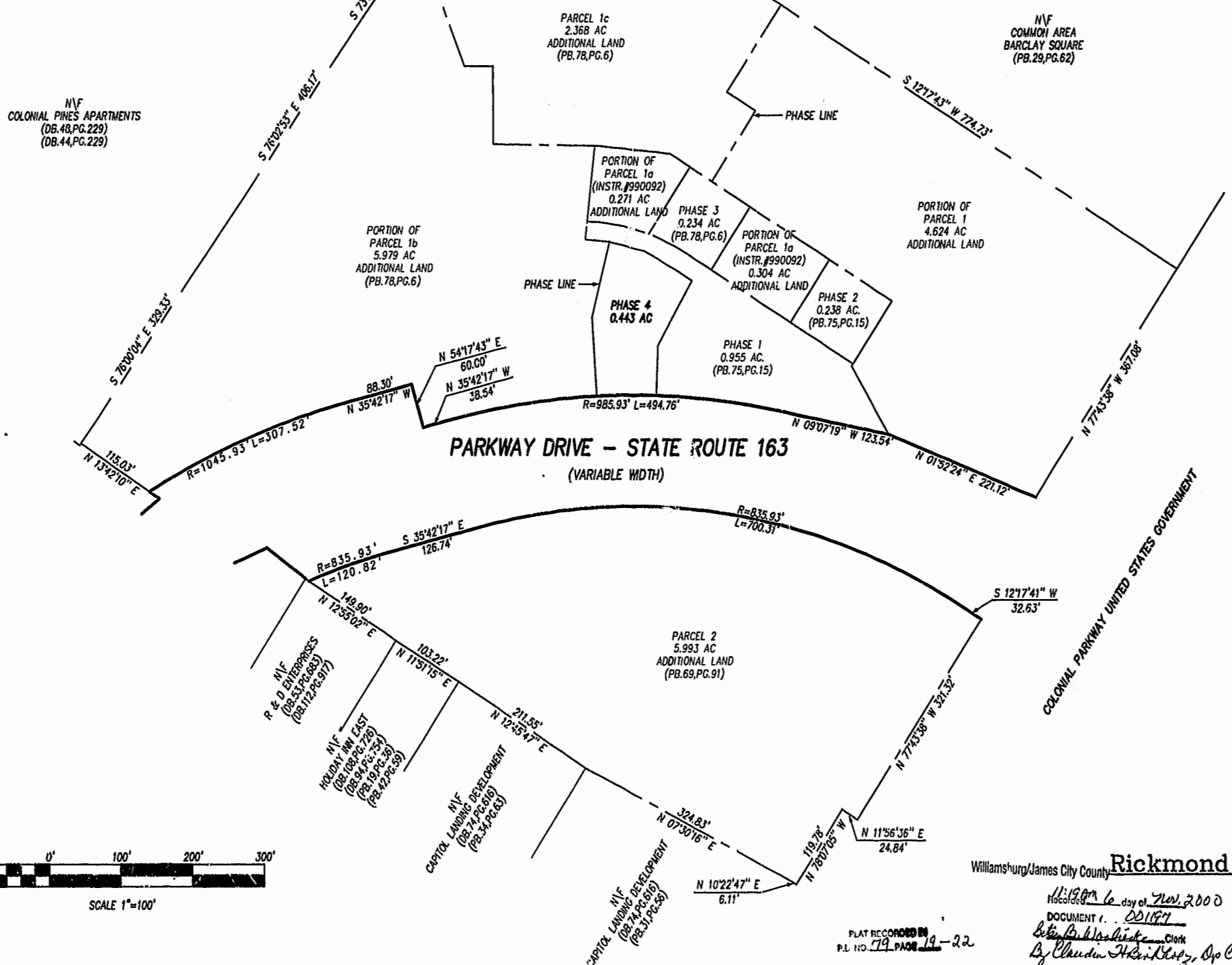
WILLIAMSBURG, VIRGINIA

DATE: OCTOBER 19, 2000 SCALE: 1"=100'

I HEREBY CERTIFY THAT THIS PLAT IS ACCURATE AND THAT IT COMPLIES WITH SECTION 55-79.5B(A) OF THE VIRGINIA CONDOMINIUM ACT AS AMENDED AND THAT ALL UNITS OR PORTION THEREOF DEPICTED HEREON HAVE BEEN SUBSTANTIALLY COMPLETED EXCEPT AS OTHERWISE NOTED.



SIGNED: _____ DATE: 10/19/00



PLAT RECORDED IN
P.L. NO. 79 PAGE 19-22

Williamsburg/James City County **Rickmond Engineering, Inc.**

11/19/00 6 day of Nov. 2000

DOCUMENT # 00197

Craig B. Davenport Clerk

Claudia A. ... SHEET 1 OF 4

Engineering
Surveying
Land Planning
www.rickmond.com