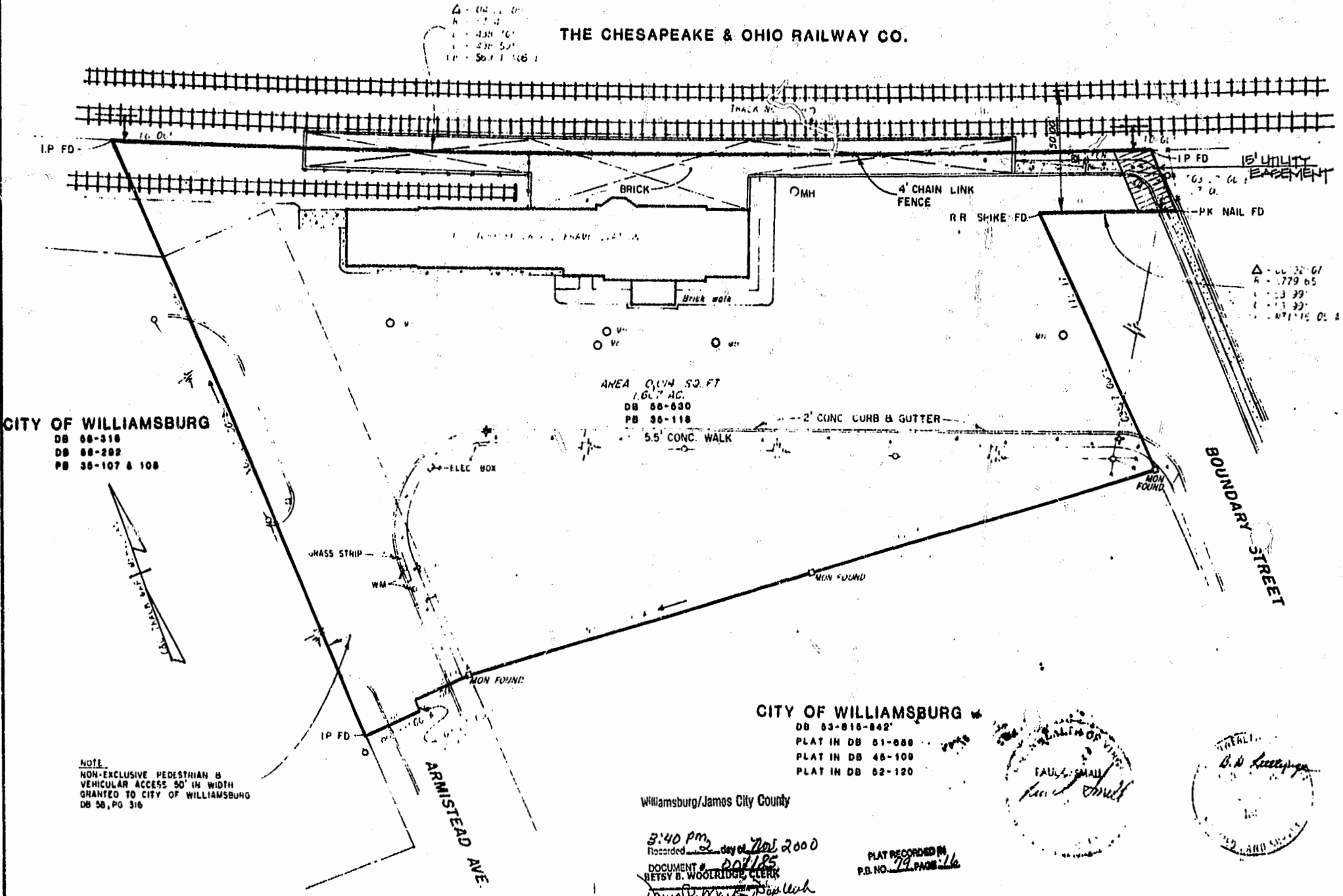


NO. 5 1979
JULY 27 1983
27-47-C

THE CHESAPEAKE & OHIO RAILWAY CO.



Δ - 04 11 01
 H - 17 4
 L - 434 10
 I - 434 50
 P - 50 1 106 1

AREA 0.04 SQ. FT
 1.607 AC.
 DB 88-830
 PB 38-118

CITY OF WILLIAMSBURG
 DB 88-318
 DB 88-292
 PB 38-107 & 108

CITY OF WILLIAMSBURG
 DB 83-816-842
 PLAT IN DB 81-888
 PLAT IN DB 48-100
 PLAT IN DB 82-120

NOTE
 NON-EXCLUSIVE PEDESTRIAN &
 VEHICULAR ACCESS 50' IN WIDTH
 GRANTED TO CITY OF WILLIAMSBURG
 DB 88, PG 316

Williamsburg/James City County

3:40 pm
 Recorded day of Jul 2000
 DOCUMENT # 201185
 BETSY B. WOOLRIDGE, CLERK
Donna M. ...

PLAT RECORDED IN
 P.B. NO. 79 PAGE 16



SURVEY OF
THE RAILROAD STATION
 LYING IN THE CITY OF WILLIAMSBURG, VIRGINIA

architects and engineers, inc.
 architects engineers surveyors and planners
 Williamsburg, Virginia

PROJ. NO. 10-9-79
 DATE 7-30-00
 SHEET NO. 3468
 OF 3433