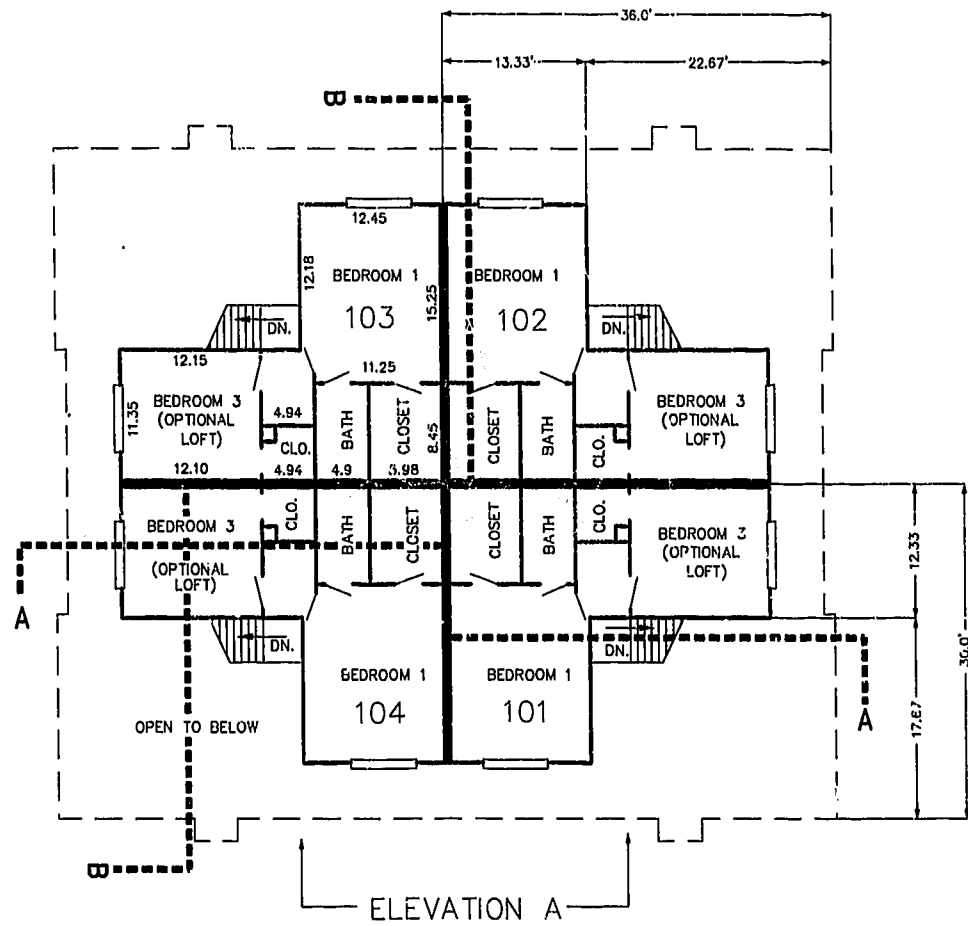


FIRST FLOOR PLAN
(UNIT #103 IS TYPICAL)



SECOND FLOOR PLAN
(UNIT #103 IS TYPICAL)



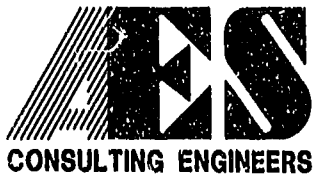
ELEVATION A



ELEVATION B

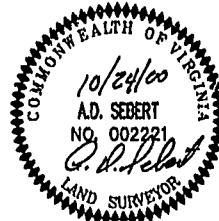
PLAT 1 ORDERED IN
"B. NO. 1" PAGE 1-6

10.24.00-08:40 8395P105.DWG JFS



5248 Olde Towne Road, Suite 1
Williamsburg, Virginia 23188
(757) 253-0040
Fax (757) 220-8994

PLAT OF CONDOMINIUM
WESTGATE AT WILLIAMSBURG,
A CONDOMINIUM
PHASE TEN
OWNED BY: 752 L.L.C.,
A VIRGINIA LIMITED LIABILITY COMPANY
CITY OF WILLIAMSBURG VIRGINIA



Williamsburg/James City County		
10:05 AM	10/24/00	
ISSUED	Day of	
DOCUMENT #	00138	
REBEY D. WOOLRIDGE, CLERK OF CIRCUIT COURT		
No.	DATE	REVISION / COMMENT / NOTE
		BY

Designed GTW/ADS	Drawn JFS
Scale 1" = 10'	Date 10/24/00
Project No. 8395-6	
Drawing No. 5 OF 6	