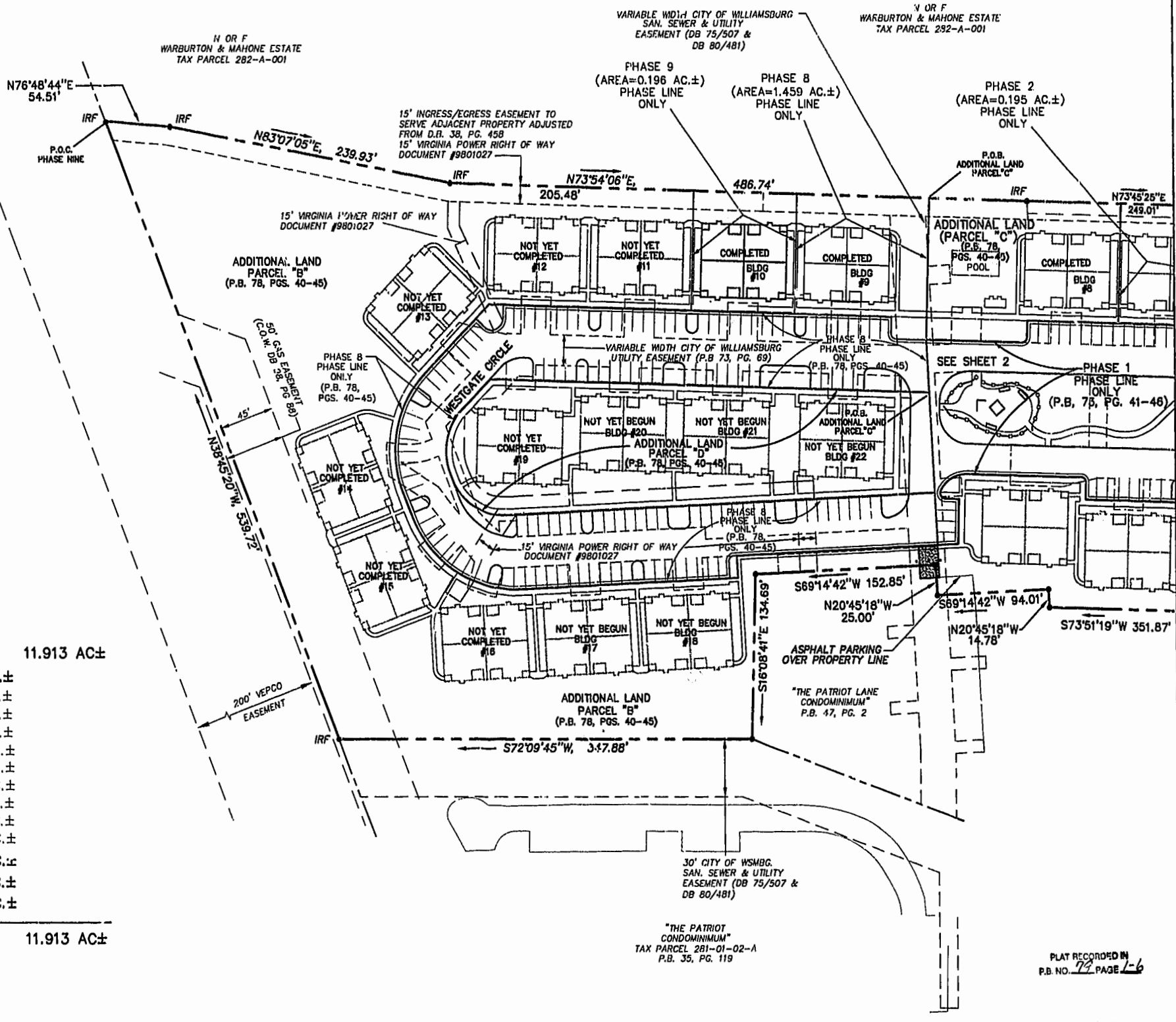
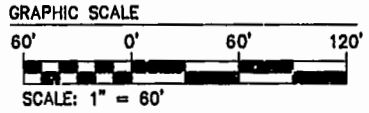
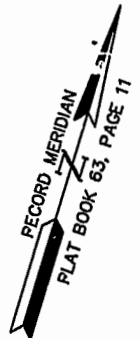


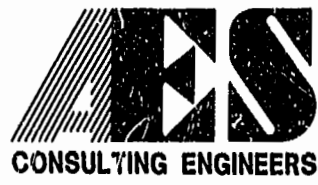
NOTE:  
 AT THE TIME OF THIS SURVEY  
 ROADS AND SIDEWALK ARE UNDER  
 CONSTRUCTION. (PROPOSED  
 LOCATION SHOWN). WATER &  
 & SANITARY SYSTEM ARE IN PLACE.



**AREA**

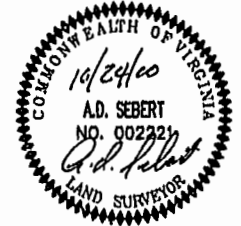
TOTAL AREA PARCEL 1=	11.913 AC±
(SEE SHEET 2) PHASE TEN=	0.222 AC±
PHASE NINE=	0.196 AC±
PHASE EIGHT=	1.459 AC±
PHASE SEVEN=	0.216 AC±
PHASE SIX=	0.343 AC±
PHASE FIVE=	0.235 AC±
PHASE FOUR=	0.200 AC±
PHASE THREE=	0.195 AC±
PHASE TWO=	0.195 AC±
PHASE ONE=	3.355 AC±
ADDITIONAL AREA (PARCEL "B")=	4.007 AC±
ADDITIONAL AREA (PARCEL "C")=	0.396 AC±
ADDITIONAL AREA (PARCEL "D")=	0.893 AC±
<b>TOTAL=</b>	<b>11.913 AC±</b>

10.24.00-03.35 B:395P103.DWG JFS



5248 Olde Towne Road, Suite 1  
 Williamsburg, Virginia 23188  
 (757) 253-0040  
 Fax (757) 220-8994

**PLAT OF CONDOMINIUM  
 WESTGATE AT WILLIAMSBURG,  
 A CONDOMINIUM  
 PHASE TEN**  
 OWNED BY: 752 L.L.C.,  
 A VIRGINIA LIMITED LIABILITY COMPANY  
 CITY OF WILLIAMSBURG VIRGINIA



Williamsburg/James City County		
10:05 AM	2/29	2000
RECORDED	FILED	
NO. 1138		
BY: [Signature] CLERK		
NO. 1138 WILLIAMSBURG, CLERK FOR JAMES CITY COUNTY		
No.	DATE	REVISION / COMMENT / NOTE
		BY

Designed GTW/ADS	Drawn JFS
Scale 1" = 80'	Date 10/24/00
Project No. 8395-6	
Drawing No. 3 OF 6	

PLAT RECORDED IN  
 P.B. NO. 72 PAGE 1-6