

PLAT OF SUBDIVISION
WATERFORD
AT
POWHATAN SECONDARY
PHASE TWENTY-FOUR
BERKELEY DISTRICT
JAMES CITY COUNTY, VA. - 1A

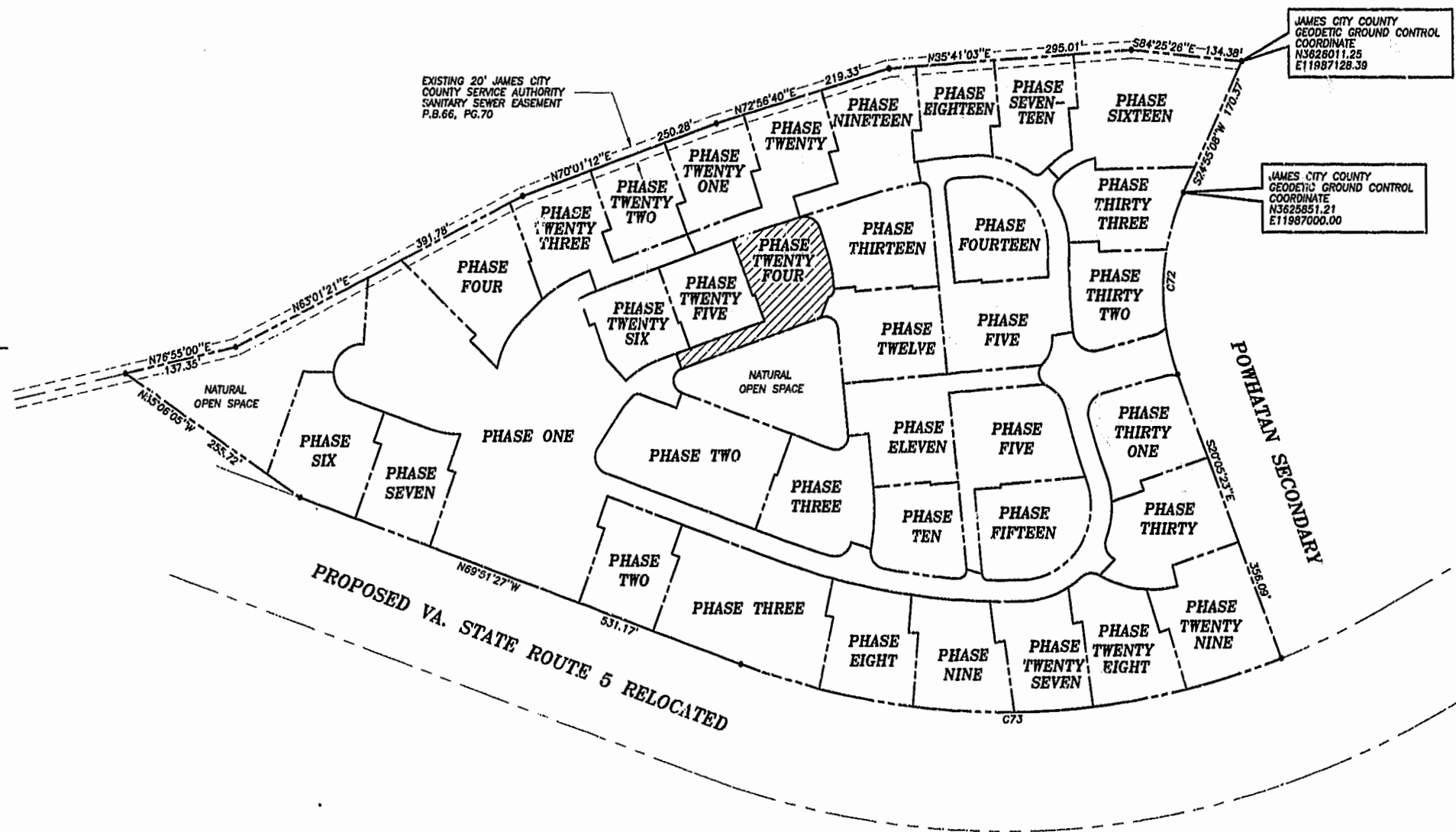
DATE: 10/21/98 SHEET 2 OF 3 SCALE: 1"=100'
PROJECT NO: 97-008 DRAWN BY: SJB



SLEDD & ASSOCIATES, P.C.
ENGINEERS PLANNERS SURVEYORS
11832 ROCK LANDING DRIVE, SUITE 203
NEWPORT NEWS, VIRGINIA 23608
(757) 873-3388

00°32'24"
JAMES CITY COUNTY
TOWNSHIP
GROUND CONTROL
MERCATOR
PLAT BOOK 66, PAGE 70

NOW OR FORMERLY
POWHATAN ENTERPRISES, INC.



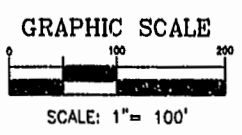
JAMES CITY COUNTY
GEODETIC GROUND CONTROL
COORDINATE
N3628011.25
E11887128.39

JAMES CITY COUNTY
GEODETIC GROUND CONTROL
COORDINATE
N3625851.21
E11887000.00



CURVE DATA

NUMBER	DELTA	RADIUS	LENGTH	TANGENT	CHORD	CHORD BEARING
C72	45°00'31"	280.00'	219.95'	116.00'	214.34'	S02°24'52"W
C73	41°26'14"	924.91'	668.91'	349.84'	654.43'	S89°25'26"W



PLAT RECORDED IN
P.B. NO. 78 PAGE 99-101

Williamsburg/James City County
Recorded 25th day of October, 2000
DOCUMENT # 2000-20570-140
MITSY B. WOOLRIDGE, CLERK OF CIRCUIT COURT