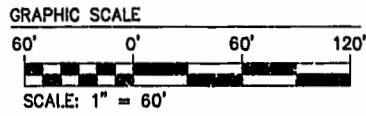
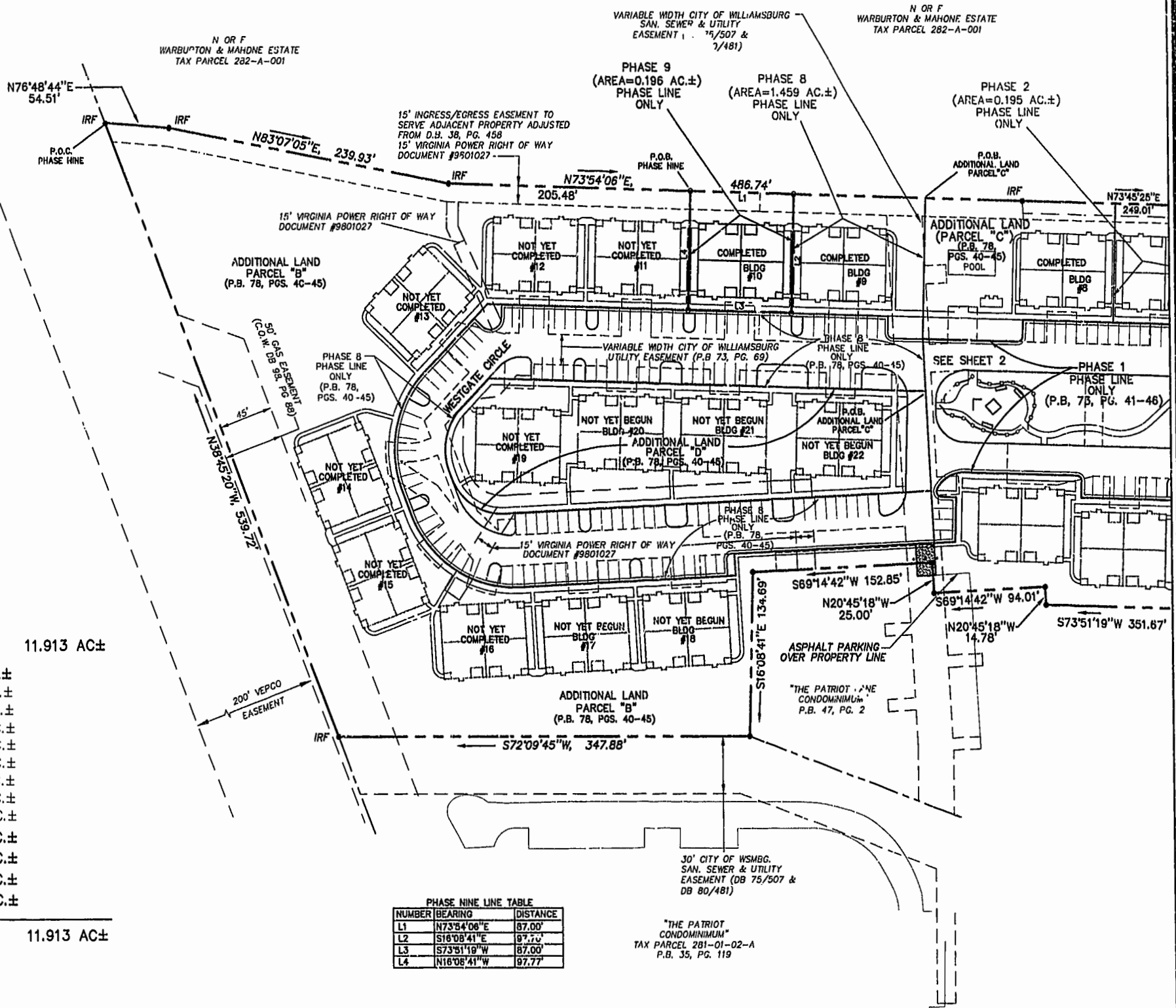


NOTE:
 AT THE TIME OF THIS SURVEY
 ROADS AND SIDEWALK ARE UNDER
 CONSTRUCTION. (PROPOSED
 LOCATION SHOWN). WATER &
 & SANITARY SYSTEM ARE IN PLACE.



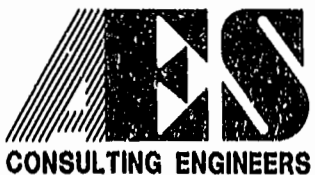
AREA	
TOTAL AREA PARCEL 1=	11.913 AC±
PHASE NINE=	0.196 AC±
PHASE EIGHT=	1.459 AC±
PHASE SEVEN=	0.216 AC±
PHASE SIX=	0.343 AC±
PHASE FIVE=	0.235 AC±
PHASE FOUR=	0.200 AC±
PHASE THREE=	0.106 AC±
PHASE TWO=	0.195 AC±
PHASE ONE=	3.355 AC±
ADDITIONAL AREA (PARCEL "A")=	0.222 AC±
ADDITIONAL AREA (PARCEL "B")=	4.007 AC±
ADDITIONAL AREA (PARCEL "C")=	0.396 AC±
ADDITIONAL AREA (PARCEL "D")=	0.893 AC±
TOTAL=	11.913 AC±



PHASE NINE LINE TABLE

NUMBER	BEARING	DISTANCE
L1	N73°54'06"E	87.00'
L2	S16°08'41"E	97.77'
L3	S73°51'19"W	87.00'
L4	N16°08'41"W	97.77'

10.04.00--10:11 8395PH93.DWG



5248 Olde Towne Road, Suite 1
 Williamsburg, Virginia 23188
 (757) 253-0040
 Fax (757) 220-8994

PLAT OF CONDOMINIUM
 WESTGATE AT WILLIAMSBURG,
 A CONDOMINIUM
 PHASE NINE
 OWNED BY: 752 L.L.C.,
 A VIRGINIA LIMITED LIABILITY COMPANY
 CITY OF WILLIAMSBURG VIRGINIA



No.	DATE	REVISION / COMMENT / NOTE	BY

Williamsburg/James City County
 PLAT RECORDED IN ... day of October, 2000
 P.B. NO. 78, PAGE 94
 DOCUMENT # 001000 9:19
 Maura Bussell, Dep.
 BETSY B. WOOLRIDGE, CLERK

Designed	Drawn
GTW/ADS	JFS
Scale	Date
1" = 60'	10/04/00
Project No. 8395-6	
Drawing No. 3 OF 6	