

PLAT OF SUBDIVISION
WATERFORD
 AT
POWHATAN SECONDARY

PHASE NINETEEN
 BERKELEY DISTRICT
 JAMES CITY COUNTY, VIRGINIA

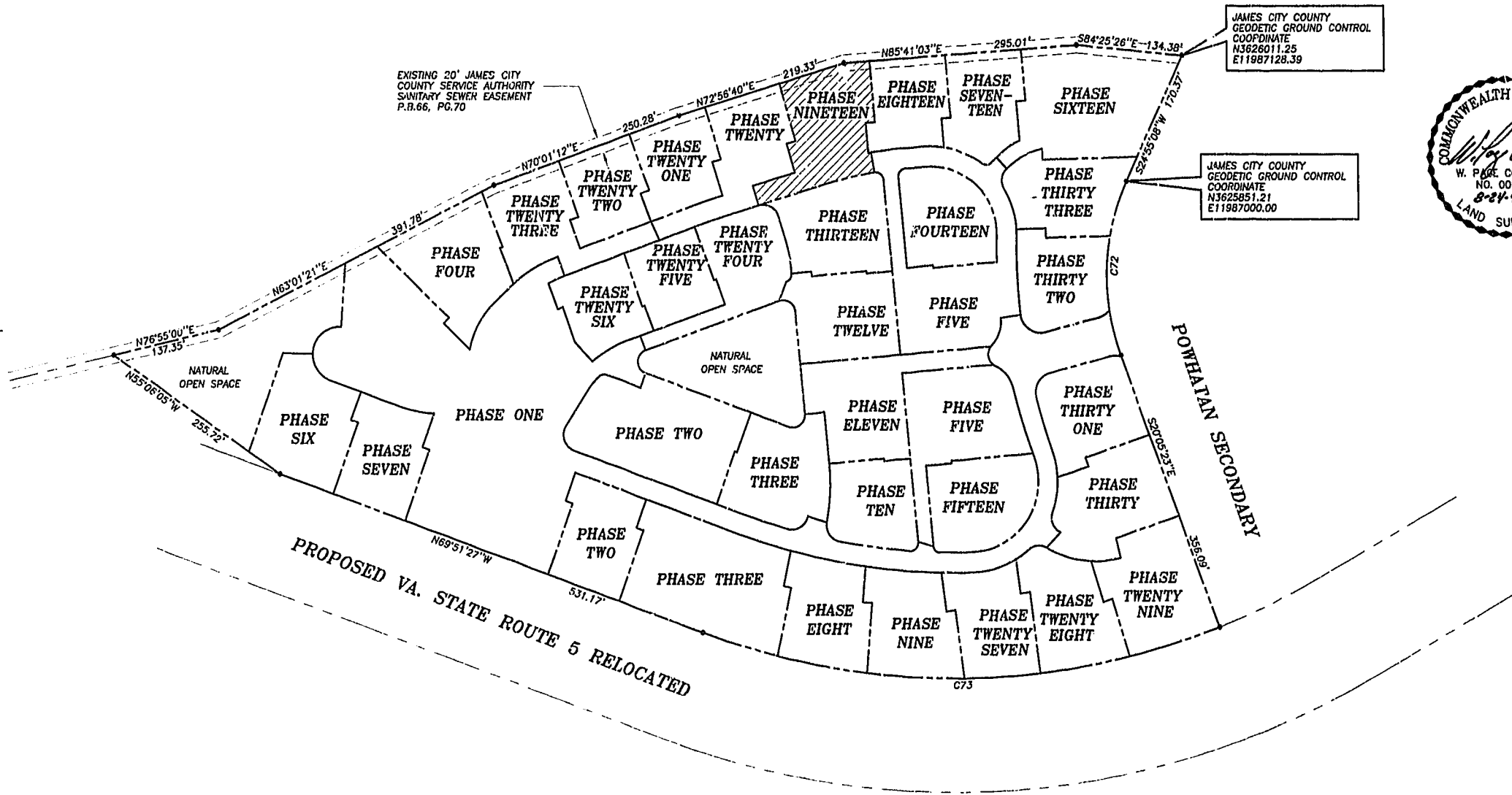
DATE: 10/21/98 SHEET 2 OF 3 SCALE: 1"=100'

PROJECT NO: 97-008 DRAWN BY: SJB

SA SLEDD & ASSOCIATES, P.C.
 ENGINEERS PLANNERS SURVEYORS
 11832 ROCK LANDING DRIVE, SUITE 203
 NEWPORT NEWS, VIRGINIA 23606
 (757) 873-3386

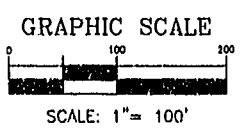
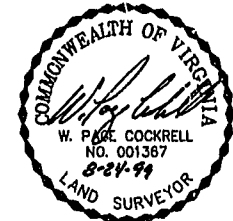
00'32'24"
 JAMES CITY COUNTY
 PLAT BOOK 65, PAGE 70

NOW OR FORMERLY
 POWHATAN ENTERPRISES, INC.



JAMES CITY COUNTY
 GEODETIC GROUND CONTROL
 COORDINATE
 N3626011.25
 E11987128.39

JAMES CITY COUNTY
 GEODETIC GROUND CONTROL
 COORDINATE
 N3625851.21
 E11987000.00



CURVE DATA

NUMBER	DELTA	RADIUS	LENGTH	TANGENT	CHORD	CHORD BEARING
C72	45°00'31"	280.00'	219.95'	116.00'	214.34'	S02°24'52"W
C73	41°26'14"	924.91'	668.91'	349.84'	654.43'	S89°25'26"W

12:13 PM Williamsburg/James City County
 Recorded 10 day of DEC 2000
 DOCUMENT # 000019584
 Betsy B. Woolridge, Clerk