

PLAT OF SUBDIVISION  
**WATERFORD**  
 AT  
**POWHATAN SECONDARY**  
 COMMON AREA AND  
 NATURAL OPEN SPACE EXHIBIT  
 BERKELEY DIST. ...  
 JAMES CITY COUNTY, VIRGINIA

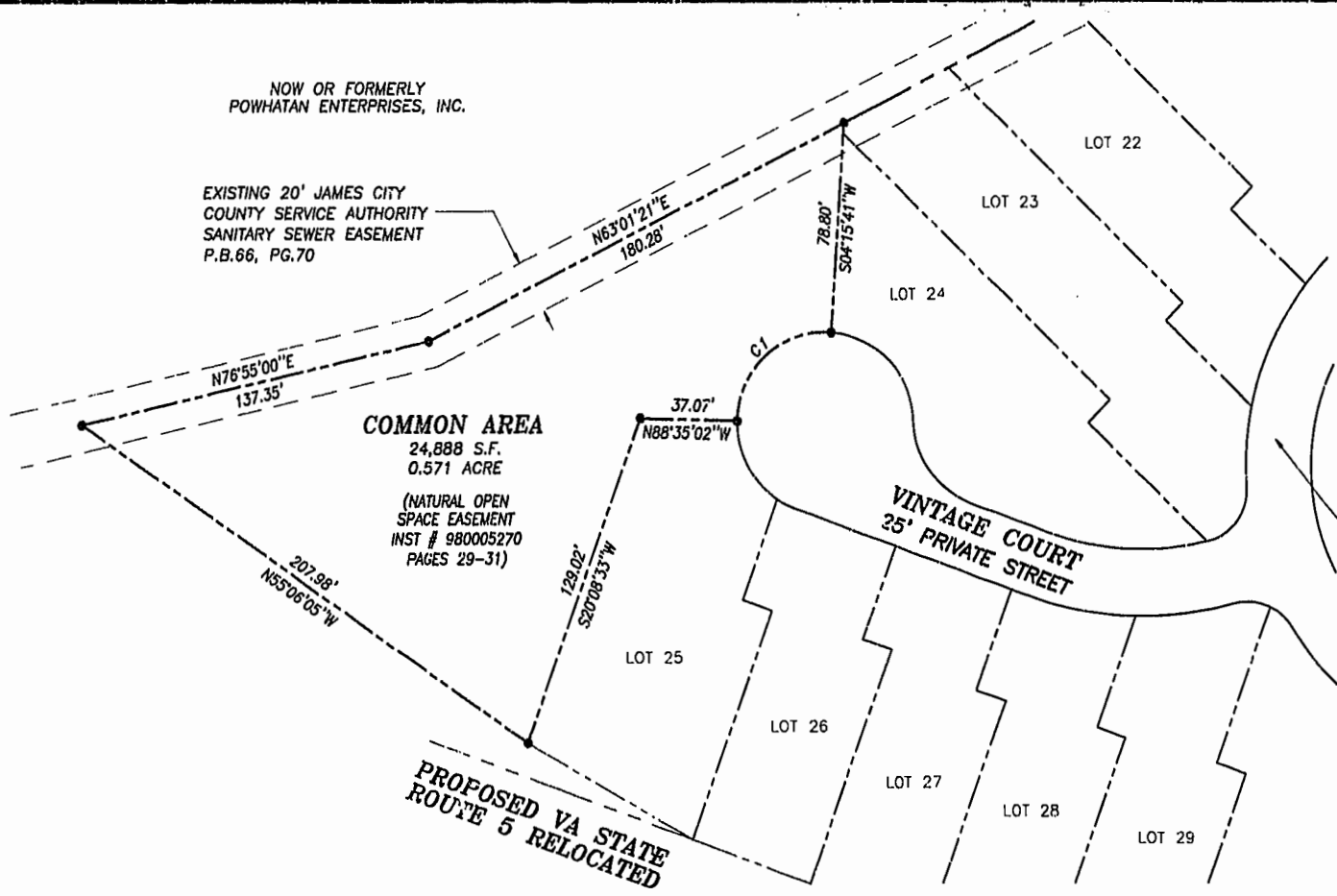
DATE: 10/21 '98    SHEET 3 OF 3    SCALE: 1"=40'  
 PROJECT NO: 97-008    DRAWN BY: SJB

**SA SLEDD & ASSOCIATES, P.C.**  
 ENGINEERS PLANNERS SURVEYORS  
 11832 ROCK LANDING DRIVE, SUITE 203  
 NEWPORT NEWS, VIRGINIA 23606  
 (757) 873-3386



PLAT BOOK 66, PAGE 70

NOW OR FORMERLY  
 POWHATAN ENTERPRISES, INC.  
 EXISTING 20' JAMES CITY  
 COUNTY SERVICE AUTHORITY  
 SANITARY SEWER EASEMENT  
 P.B.66, PG.70



**COMMON AREA**  
 24,888 S.F.  
 0.571 ACRE  
 (NATURAL OPEN  
 SPACE EASEMENT  
 INST # 980005270  
 PAGES 29-31)

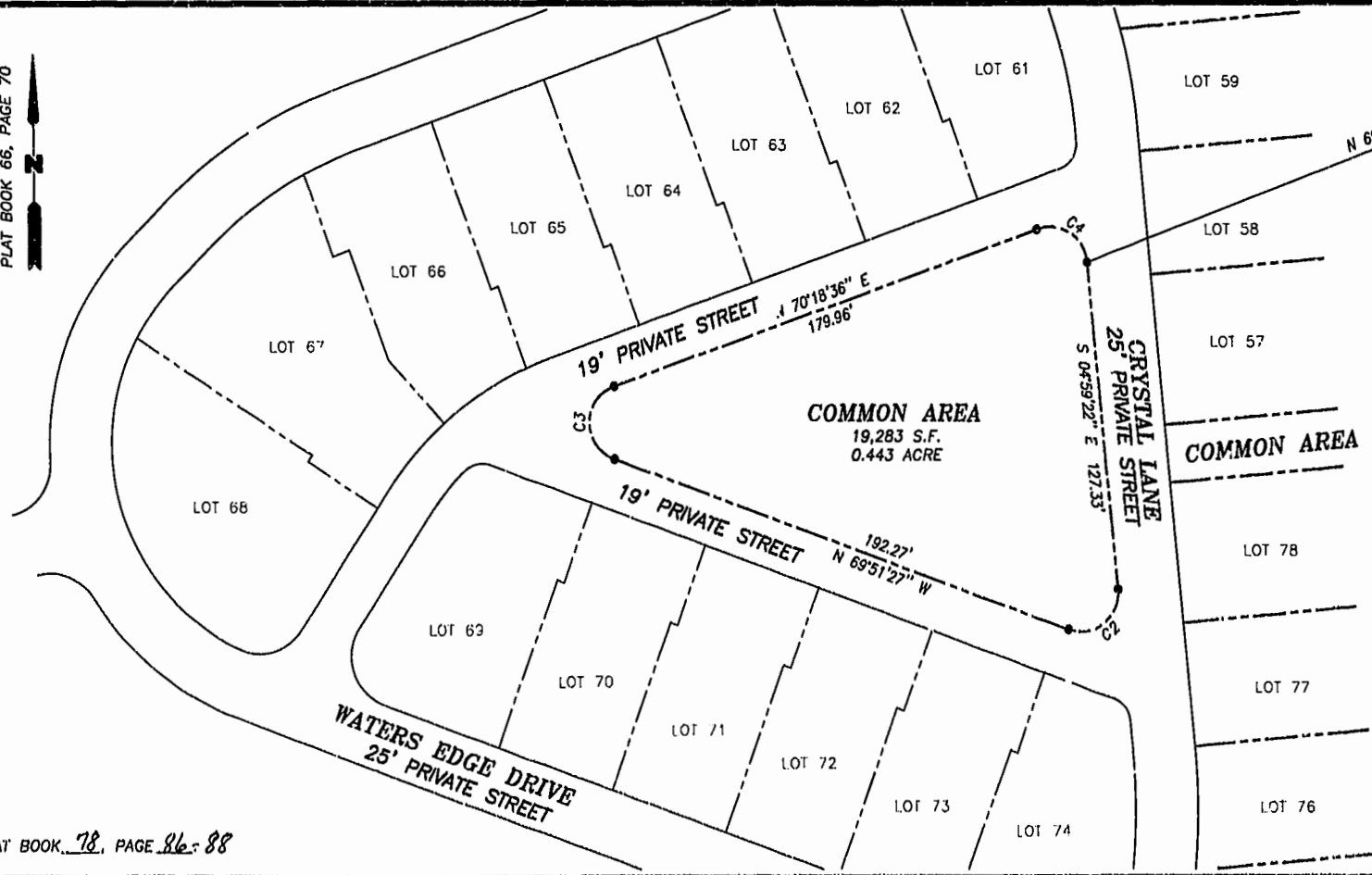
WATERS EDGE DRIVE  
 25' PRIVATE STREET

PROPOSED VA STATE  
 ROUTE 5 RELOCATED

**CURVE DATA**

NUMBER	DELTA	RADIUS	LENGTH	TANGENT	CHORD	CHORD BEARING
C1	92°50'44"	34.00'	55.10'	35.73'	49.26'	S 47°50'19" W

PLAT BOOK 66, PAGE 70



**COMMON AREA**  
 19,283 S.F.  
 0.443 ACRE

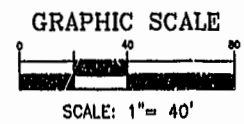
**COMMON AREA**

**CURVE DATA**

NUMBER	DELTA	RADIUS	LENGTH	TANGENT	CHORD	CHORD BEARING
C2	115°07'55"	15.00'	30.14'	23.61'	25.32'	S 52°34'36" W
C3	140°10'03"	15.00'	36.70'	41.40'	28.21'	N 00°13'35" E
C4	104°42'02"	15.00'	27.41'	19.44'	23.75'	S 57°20'23" E

Williamsburg/James City County

11:48 AM  
 Recorded 10 day of Oct 2000  
 DOCUMENT # 000015581  
 Doree Bennett, Dep. Clerk  
 BETSY B. WOOLRIDGE, CLERK



SCALE: 1" = 40'

REVISED 08/08/00  
 REVISED 07/19/00  
 REVISED 08/27/99  
 NATURAL OPEN SPACE EXH. 97-008