

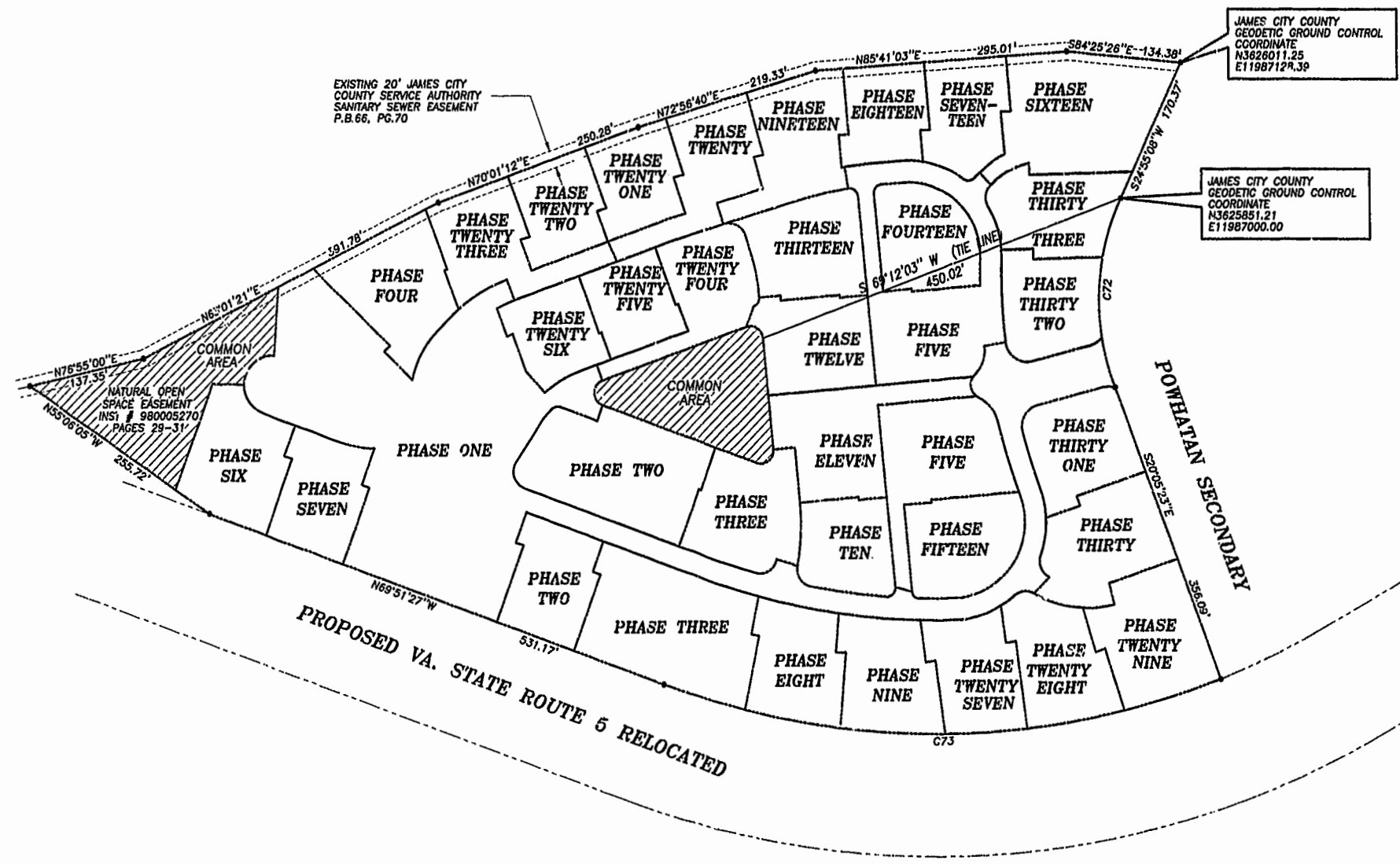
PLAT OF SUBDIVISION
WATERFORD
 AT
POWHATAN SECONDARY
 COMMON AREA AND
 NATURAL OPEN SPACE EXHIBIT
 BERKELEY DISTRICT
 JAMES CITY COUNTY, VIRGINIA

DATE: 10/21/98 SHEET 2 OF 3 SCALE: 1"=100'
 PROJECT NO: 97-008 DRAWN BY: SJB

SLEDD & ASSOCIATES, P.C.
 ENGINEERS PLANNERS SURVEYORS
 11832 ROCK LANDING DRIVE, SUITE 203
 NEWPORT NEWS, VIRGINIA 23608
 (757) 873-3386

00°32'24"
 JAMES CITY COUNTY
 GEODETIC GROUND CONTROL
 MERIDIAN
 PLAT BOOK 66, PAGE 70

NOW OR FORMERLY
 POWHATAN ENTERPRISES, INC.

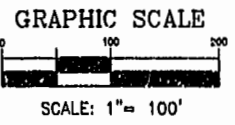


JAMES CITY COUNTY
 GEODETIC GROUND CONTROL
 COORDINATE
 N3626011.25
 E11987128.39

JAMES CITY COUNTY
 GEODETIC GROUND CONTROL
 COORDINATE
 N3625851.21
 E11987000.00



PROPOSED VA. STATE ROUTE 5 RELOCATED



CURVE DATA

NUMBER	DELTA	RADIUS	LENGTH	TANGENT	CHORD	CHORD BEARING
C72	45°00'31"	280.00'	219.95'	116.00'	214.34'	S02°24'52"W
C73	41°26'14"	924.91'	668.91'	349.84'	654.43'	S89°25'26"W

Williamsburg/James City County
 11:48 AM
 Recorded 10 day of Oct 2000
 DOCUMENT # 000019581
 Betsy B. Woolridge, Clerk

REVISED 08/08/00
 REVISED 07/18/00
 REVISED 08/27/99
 NATURAL OPEN SPACE EXH. 97-008