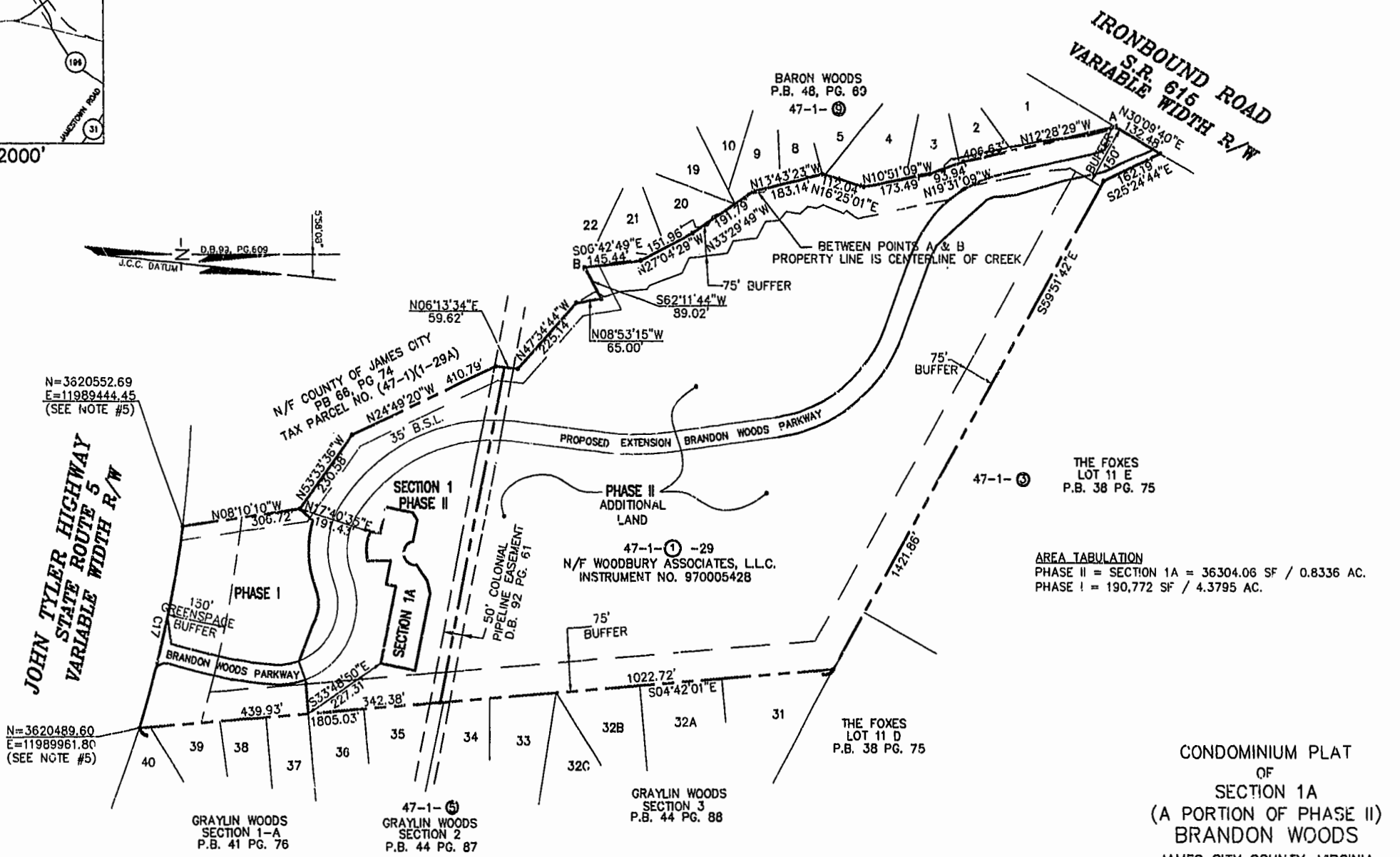
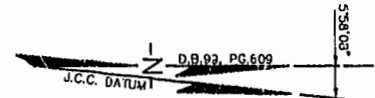


CURVE TABLE						
CURVE	LENGTH	RADIUS	TANGENT	CHORD BEARING	CHORD	DELTA
C17	521.88'	2904.79'	261.65'	N77°04'44"W	521.18'	10°17'36"



AREA TABULATION
 PHASE II = SECTION 1A = 36304.06 SF / 0.8336 AC.
 PHASE I = 190,772 SF / 4.3795 AC.

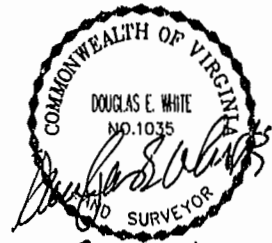
CONDOMINIUM PLAT
 OF
 SECTION 1A
 (A PORTION OF PHASE II)
 BRANDBON WOODS
 JAMES CITY COUNTY, VIRGINIA
 SCALE: 1"=200' DATE: 9/27/00

SHEET 1 OF 4



Engineers • Planners • Surveyors
 Landscape Architects • Environmental Consultants
 4029 IRONBOUND ROAD SUITE 100
 WILLIAMSBURG, VA 23188
 TEL (757) 253-2975 FAX(757) 229-0049

STATE OF VIRGINIA, COUNTY OF JAMES CITY
 IN THE CLERK'S OFFICE OF THE CIRCUIT COURT THE PLAT SHOWN HEREON WAS PRESENTED AND ADMITTED TO RECORD
 4 October 2000 AS THE LAW DIRECTS.
 BETSY B. WOOLRIDGE, CLERK
 TESTEE: *Donna Rowell*, Deputy CLERK
 PLAT BOOK 78 PAGE 79-82



Williamsburg/James City County
 11:25 AM
 Recorded
 DOCUMENT # 200019338
Mona Rowell Dep.
 BETSY B. WOOLRIDGE, CLERK

