

LINE TABLE

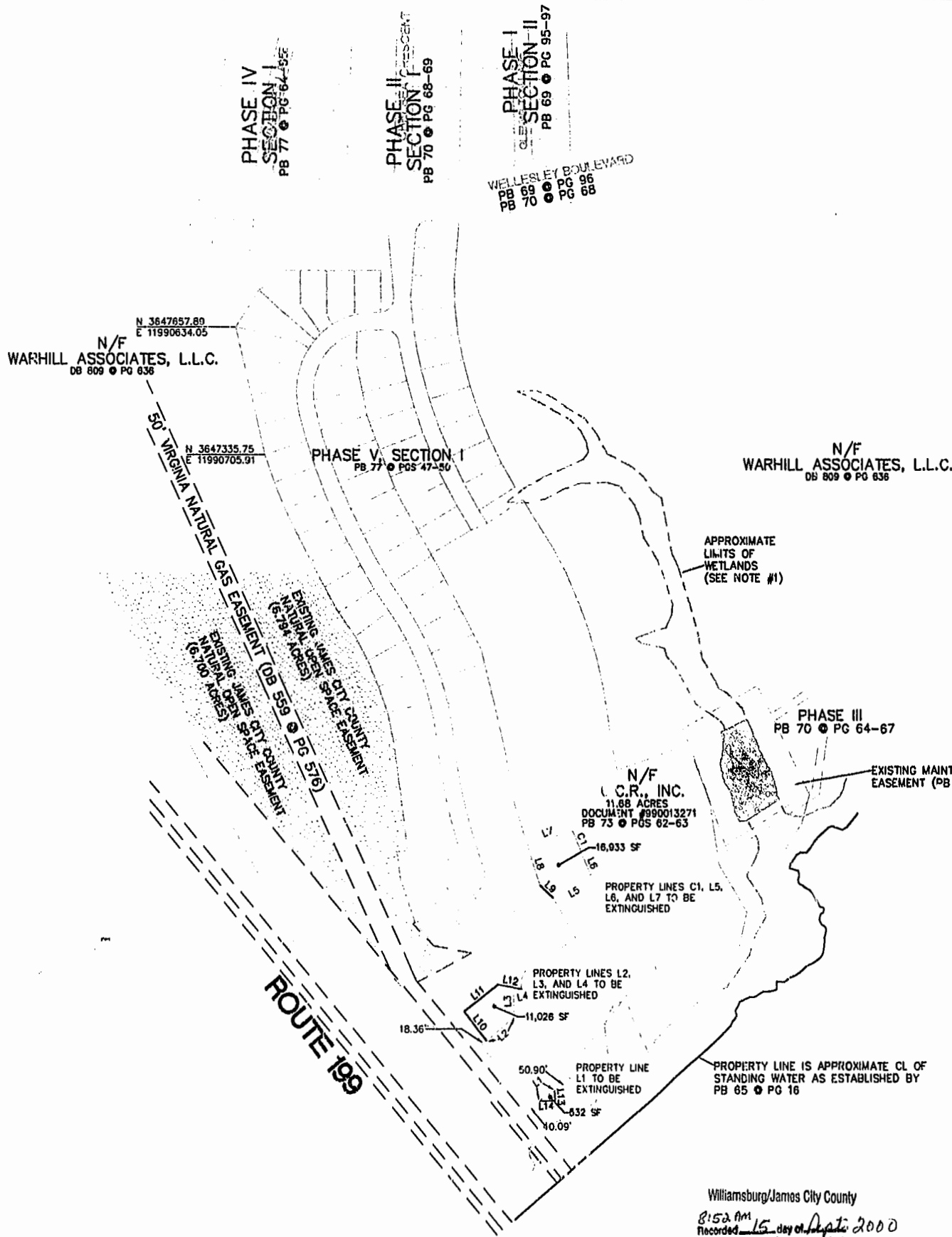
NUMBER	DIRECTION	DISTANCE
L1	S 56°53'32" W	18.01'
L2	N 50°00'30" E	94.27'
L3	N 01°51'20" W	66.83'
L4	N 78°15'02" E	21.98'
L5	N 59°52'18" E	115.75'
L6	N 24°18'14" W	47.19'
L7	S 69°56'48" W	123.21'
L8	S 17°17'54" E	103.49'
L9	S 47°24'26" E	44.88'
L10	N 37°47'36" W	93.92'
L11	N 52°12'24" E	112.11'
L12	S 78°38'03" E	81.55'
L13	S 01°51'20" E	25.43'
L14	S 88°08'40" W	41.90'

# RESUBDIVISION OF A PORTION OF PROPERTY OF WARHILL ASSOCIATES, L.L.C.

BERKELEY DISTRICT  
JAMES CITY COUNTY, VIRGINIA  
DATE: JUNE 22, 2000 SCALE 1"=200'

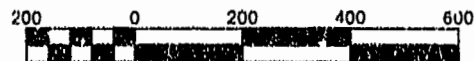
NOTES:

- 1) WETLANDS AS SHOWN HEREON DELINEATED BY DOMINION ENVIRONMENTAL CONSULTANTS, INC. AND FIELD LOCATED BY RICHMOND ENGINEERING, INC. ON 3/3/96.
- 2) MONUMENTS WILL BE INSTALLED AS REQUIRED IN SECTION 19-34 THROUGH 19-36 OF THE SUBDIVISION ORDINANCE. AT LEAST TWO NEW OR EXISTING MONUMENTS AT EXTERIOR SUBDIVISION BOUNDARIES HAVE BEEN REFERENCED TO THE COUNTY GEODETIC CONTROL NETWORK.
- 3) NEW MONUMENTS AT THE SUBDIVISION BOUNDARY ARE REFERENCED TO JAMES CITY COUNTY MONUMENT STATION NO. 308 (NAD83).
- 4) THIS SUBDIVISION HAS BEEN PREPARED WITHOUT THE BENEFIT OF A TITLE REPORT AND MAY NOT SHOW ANY/ALL EASEMENTS OR RESTRICTIONS THAT MAY AFFECT SAID PROPERTY AS SHOWN HEREON.

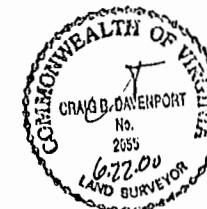


CURVE TABLE

NUMBER	DELTA	CHORD	TAN	RADIUS	ARC LEN	CH LEN
C1	04°15'02"	N 22°10'43" W	37.93	1022.00	75.82	75.80



Scale 1" = 200'



**Rickmond Engineering, Inc.**

1643-C Merrimac Trail  
Williamsburg, VA 23185  
(757)229-1776

Civil Engineering  
Environmental Engineering  
Land Surveying

N/F  
B.S. SCOTT, III  
DB 153 • PG 79  
PB 32 • PG 21  
TAX MAP (32-4), PARCEL (1-107)

Williamsburg/James City County  
8:52 AM  
Recorded 15 day of Sept 2000  
DOCUMENT # 00017626  
Chad B. Davenport, Clerk  
PLAT RECORDED IN  
P.B. NO. 178, PAGE 103 + 64  
DEEDS & RECORDS DIVISION, CLERK OF CIRCUIT COURT