

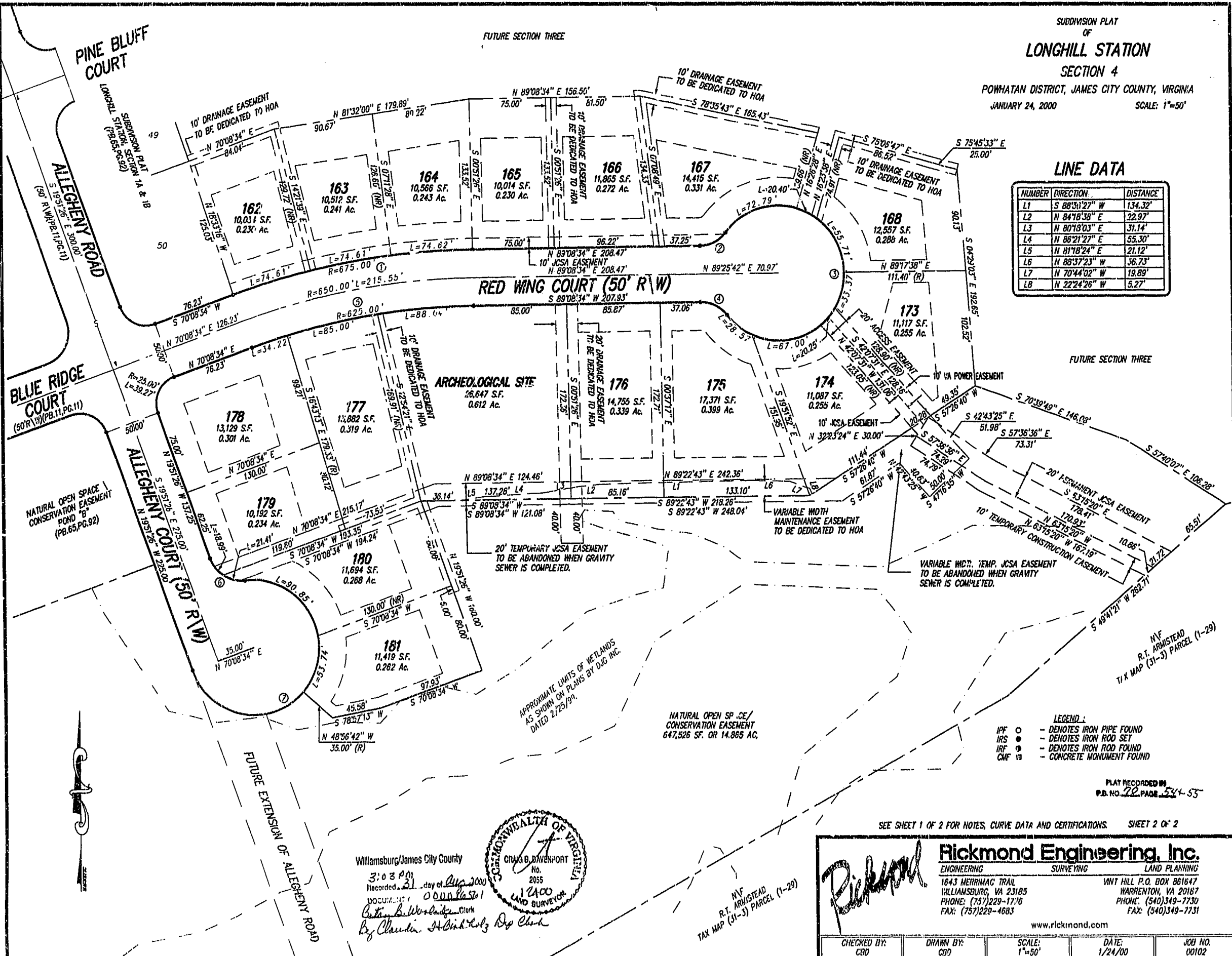
SUBDIVISION PLAT OF LONGHILL STATION SECTION 4

POWHATAN DISTRICT, JAMES CITY COUNTY, VIRGINIA JANUARY 24, 2000 SCALE: 1"=50'

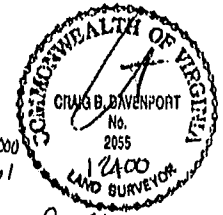
FUTURE SECTION THREE

LINE DATA

NUMBER	DIRECTION	DISTANCE
L1	S 88°31'27" W	134.32'
L2	N 84°16'38" E	32.97'
L3	N 80°18'03" E	31.14'
L4	N 85°21'27" E	55.30'
L5	N 81°16'24" E	21.12'
L6	N 88°37'23" W	36.73'
L7	N 70°44'02" W	19.89'
L8	N 22°24'26" W	5.27'



Williamsburg/James City County  
 3:03 PM  
 Recorded on 31 day of Aug 2000  
 DOCUMENT: 000016501  
 Clerk  
 By Claudia H. Binkholz Dep. Clerk



SEE SHEET 1 OF 2 FOR NOTES, CURVE DATA AND CERTIFICATIONS. SHEET 2 OF 2

**Rickmond Engineering, Inc.**  
 ENGINEERING SURVEYING LAND PLANNING  
 1643 MERRIMAC TRAIL WILLIAMSBURG, VA 23185 VINT HILL P.O. BOX 801647 WARRENTON, VA 20187  
 PHONE: (757)229-1716 FAX: (540)349-7730  
 FAX: (757)229-4683 FAX: (540)349-7731  
 www.rickmond.com

CHECKED BY: CBD	DRAWN BY: CBD	SCALE: 1"=50'	DATE: 1/24/00	JOB NO. 00102
-----------------	---------------	---------------	---------------	---------------