

EXIST. 20' JAMES CITY COUNTY SERVICE AUTHORITY SAN. SEWER EASEMENT AS SHOWN IN AS-BUILT LOCATION. D.B. 141 - PG. 388



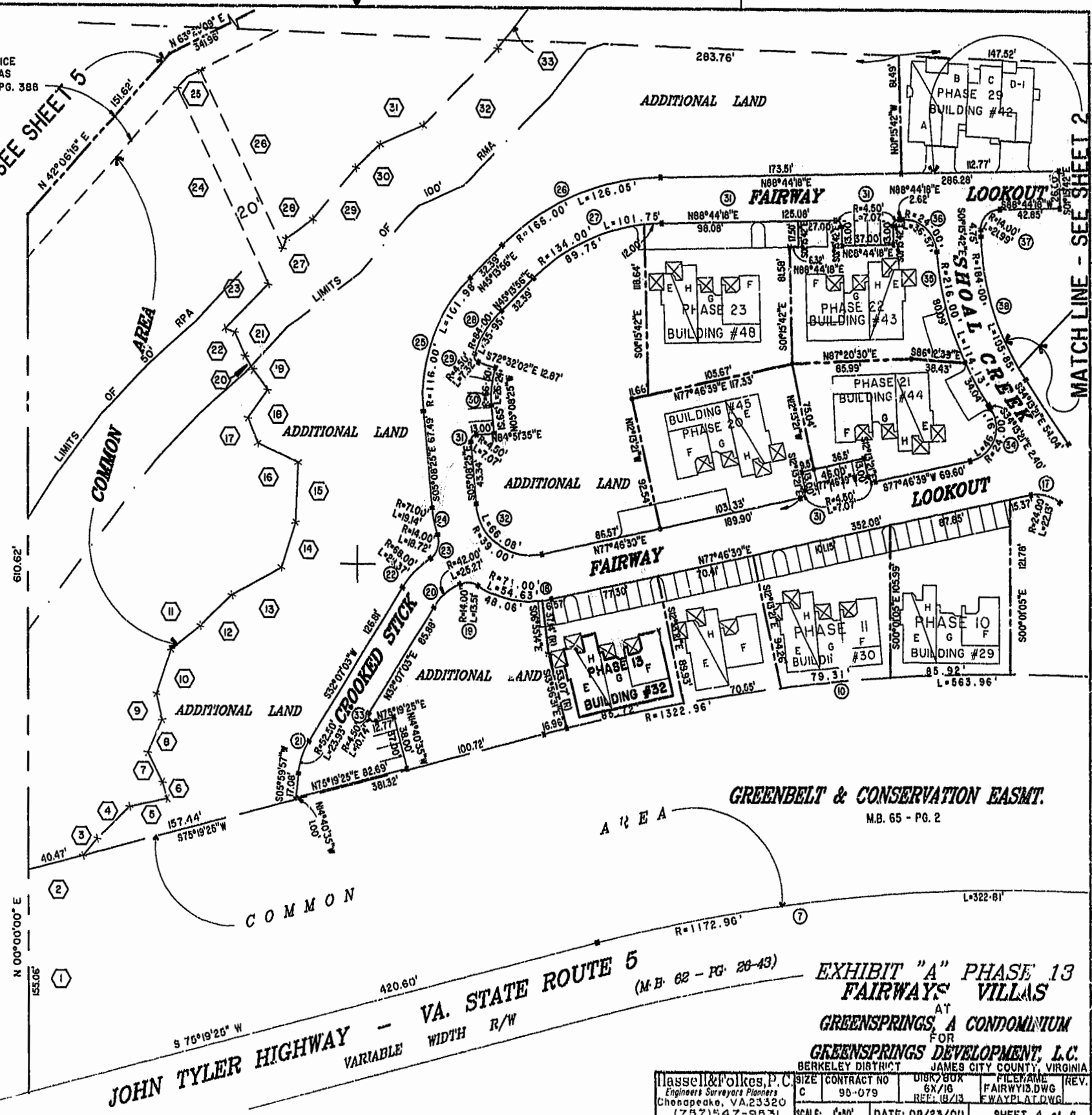
MATCH LINE - SEE SHEET 5

MATCH LINE - SEE SHEET 2

46-1-01-0-0001
"GREENSPRINGS PLANTATION"
(DB 322, PG 254)

PLAN RECORDED IN
DB 322, PAGE 1651

Williamsburg/James City County
Recorded 29 August, 2000
DOCUMENT # 000016333
DETSY B. WOOLRIDGE, CLERK OF CIRCUIT COURT



VA. STATE ROUTE 5
JOHN TYLER HIGHWAY - VARIABLE WIDTH R/W
S 76°19'25" W 420.60'
R=1172.96'

GREENBELT & CONSERVATION EASMT.
M.B. 65 - PG. 2

EXHIBIT "A" PHASE 13
FAIRWAYS VILLAS
AT
GREENSPRINGS, A CONDOMINIUM
FOR
GREENSPRINGS DEVELOPMENT, L.C.

Hassell & Folkes, P.C. Engineers & Surveyors Chesapeake, VA, 23320 (757) 547-9831	CONTRACT NO. 90-079	DATE: 08/23/00	FILE NAME: FAIRWAY13.DWG	DATE: 08/23/00
--	---------------------	----------------	--------------------------	----------------