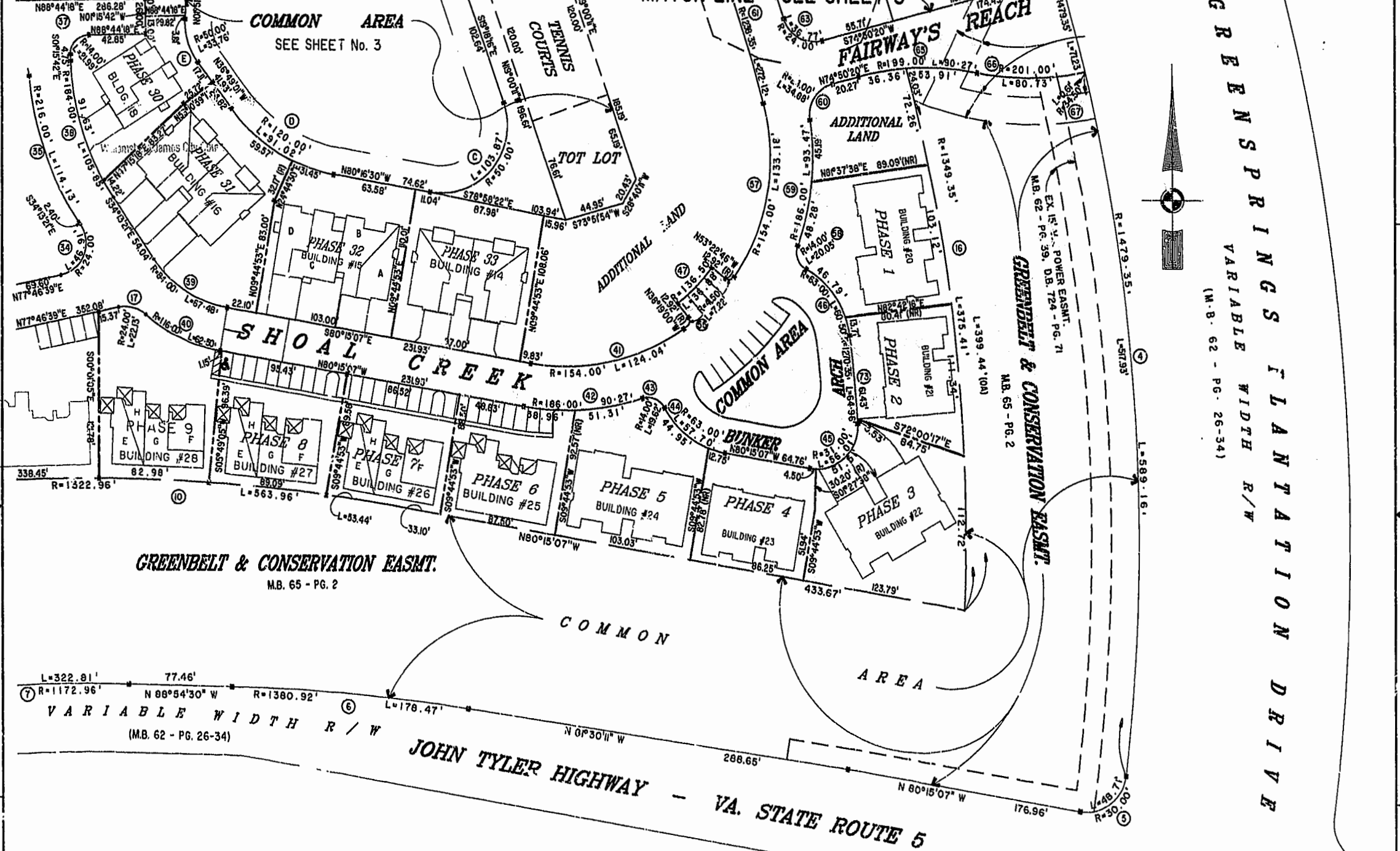


MATCH LINE SEE SHEET 4

MATCH LINE - SEE SHEET 3



GREENSPRINGS FLANATION DRIVE
VARIABLE WIDTH R/W
(M.B. 62 - PG. 26-34)

GREENBELT & CONSERVATION EASMT.
M.B. 65 - PG. 2

VARIABLE WIDTH R/W
(M.B. 62 - PG. 26-34)

JOHN TYLER HIGHWAY - VA. STATE ROUTE 5

Willimburg/James City County
 Recorded 29 days on August 2000
 DOCUMENT # 000016333
Daisy H. Woolridge
 DAISY H. WOOLRIDGE, CLERK OF CIRCUIT COURT



EXHIBIT "A" PHASE 13
 FAIRWAYS VILLAS
 AT
 GREENSPRINGS, A CONDOMINIUM
 FOR
 GREENSPRINGS DEVELOPMENT, L.C.
 BERKELEY DISTRICT JAMES CITY COUNTY, VIRGINIA

Hassel & Polkes P.C. Engineers Surveyors Planners Chesapeake, VA 23320 (757) 547-9531	CONTRACT NO 95-079	DISK/BOX 6X/16 REEL 18/13	FILENAME FAIRWAYS.DWG E WAYPL AT.DWG	REV.
SCALE: 1"=60'	DATE: 08/23/00	SHEET 2 of 6		

CONDO-3