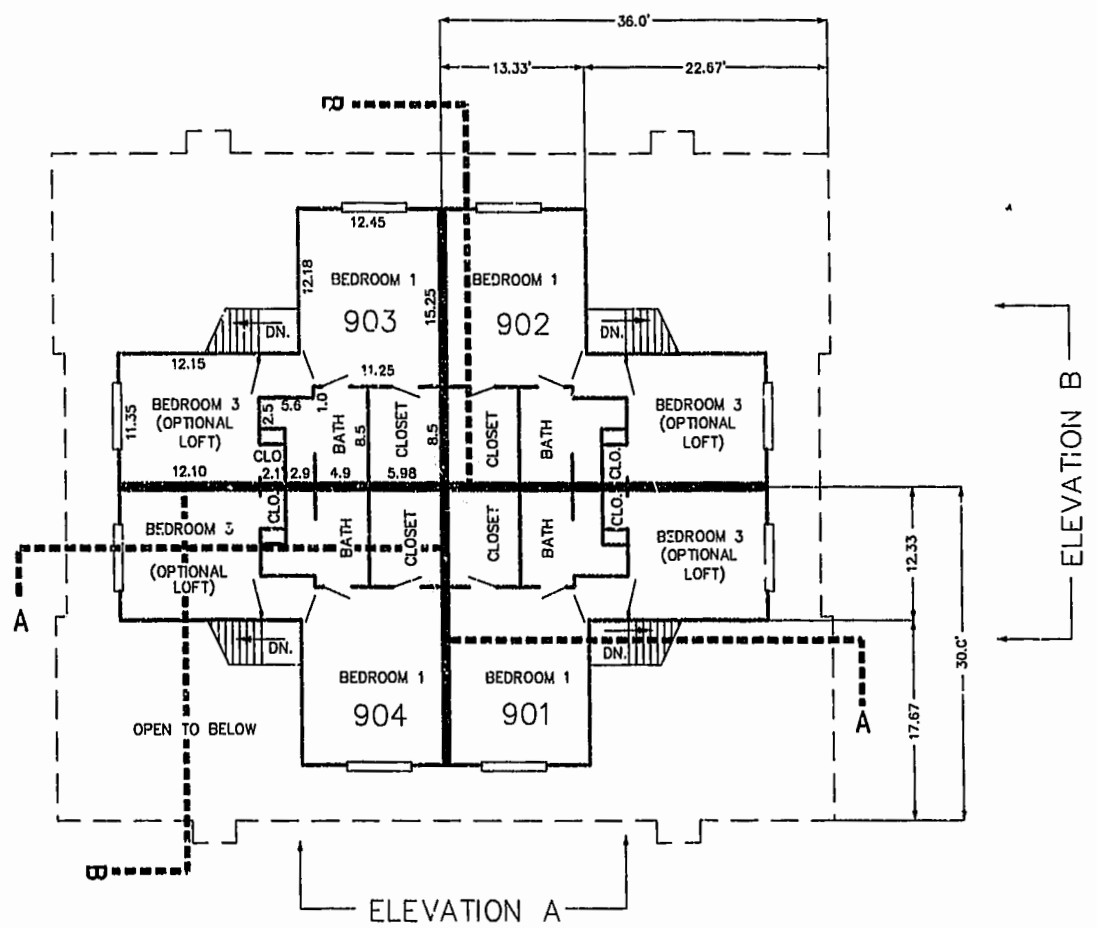
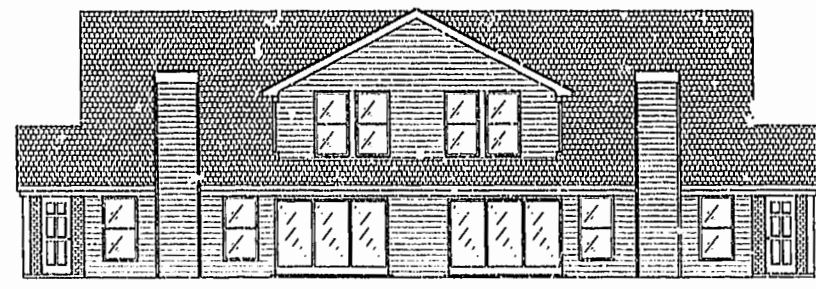


FIRST FLOOR PLAN  
(UNIT #903 IS TYPICAL)



SECOND FLOOR PLAN  
(UNIT #903 IS TYPICAL)

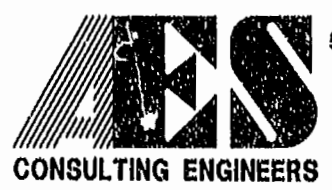


ELEVATION A



ELEVATION B

PLAT RECORDED IN  
P.D. NO. 78 PAGE 44



5248 Olde Towne Road, Suite 1  
Williamsburg, Virginia 23188  
(757) 253-0040  
Fax (757) 220-8994

PLAT OF CONDOMINIUM  
WESTGATE AT WILLIAMSBURG,  
A CONDOMINIUM  
PHASE EIGHT  
OWNED BY: 752 L.L.C.,  
A VIRGINIA LIMITED LIABILITY COMPANY  
CITY OF WILLIAMSBURG VIRGINIA



Williamsburg/James City County		
11.15 AM	Recorded	29 day of Aug. 2000
DOCUMENT # 000 929		
METBY M. WOODRIDGE, CLERK OF CIRCUIT COURT		
No.	DATE	REVISION / COMMENT / NOTE
		BY

Designed GTW/ADS	Drawn JFS
Scale 1" = 10'	Date 8/28/00
Project No. 8395-6	
Drawing No. 5 OF 6	

08.27.00-10:15 8395PH85.DWG