

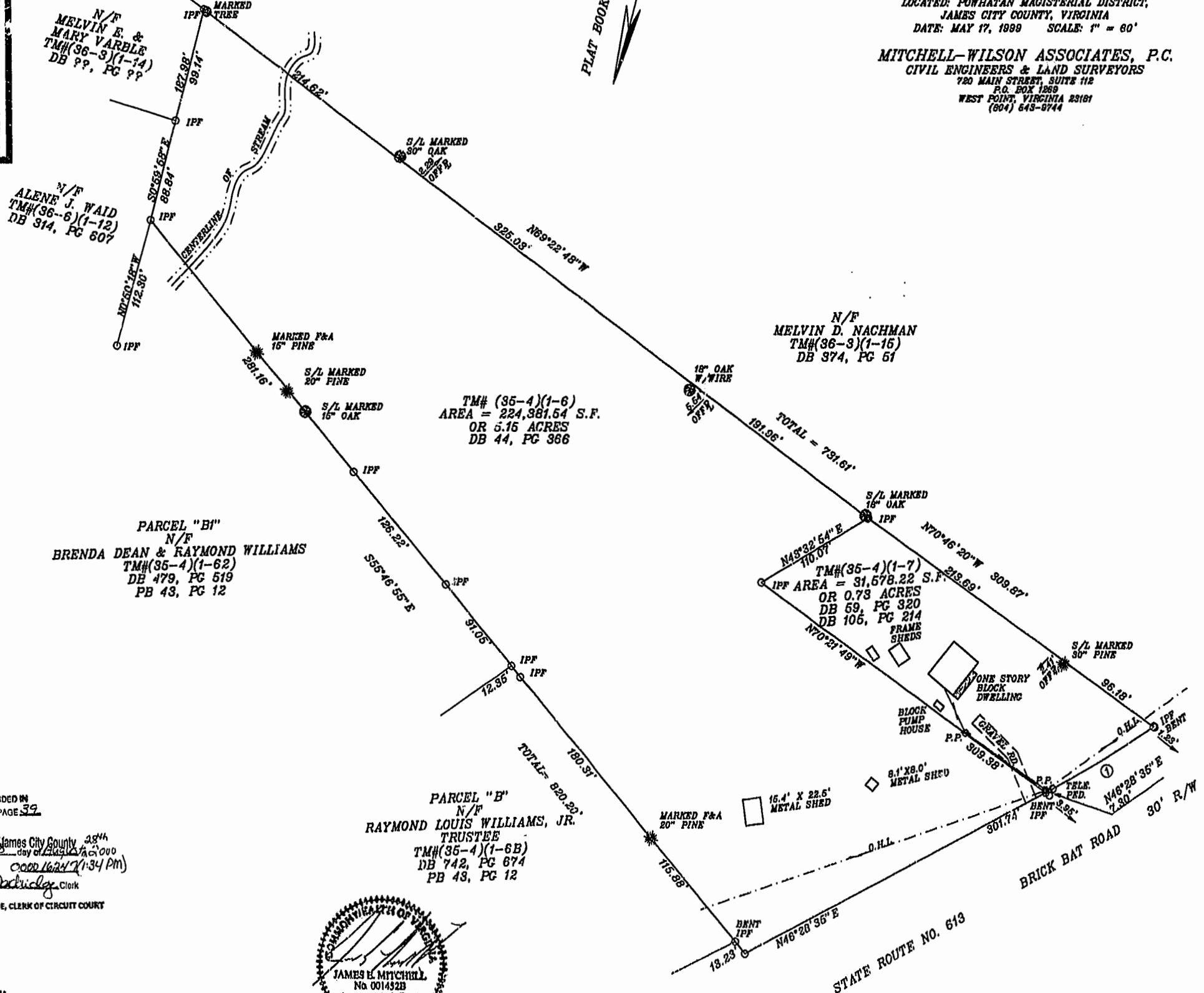
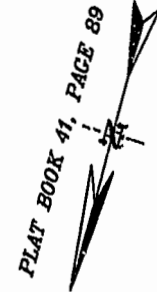
VICINITY MAP

PLAT OF PROPERTY BOOK 78 PAGE 39

STANDING IN THE NAME OF
NORMA G. DEAN

BEING
TAX MAP # (35-4)(1-6) & (35-4)(1-7)
LOCATED: POWHATAN MAGISTERIAL DISTRICT,
JAMES CITY COUNTY, VIRGINIA
DATE: MAY 17, 1989 SCALE: 1" = 60'

MITCHELL-WILSON ASSOCIATES, P.C.
CIVIL ENGINEERS & LAND SURVEYORS
720 MAIN STREET, SUITE 112
P.O. BOX 1289
WEST POINT, VIRGINIA 23181
(804) 643-8744



N/F
ALENE J. WAID
TM#(36-6)(1-12)
DB 314, PG 607

N/F
MELVIN D. NACHMAN
TM#(36-3)(1-15)
DB 374, PG 61

PARCEL "B1"
N/F
BRENDA DEAN & RAYMOND WILLIAMS
TM#(35-4)(1-62)
DB 479, PG 519
PB 43, PG 12

TM# (35-4)(1-6)
AREA = 224,381.54 S.F.
OR 5.15 ACRES
DB 44, PG 386

PARCEL "B"
N/F
RAYMOND LOUIS WILLIAMS, JR.
TRUSTEE
TM#(35-4)(1-6B)
DB 742, PG 674
PB 43, PG 12



REFERENCES:
PB 38, PG 60
PB 43, PG 12
PB 41, PG 89

DB 163, PG 722
DB 163, PG 723
DB 163, PG 730
DB 163, PG 731
DB 163, PG 734
DB 163, PG 736
DB 164, PG 181
DB 164, PG 182
DB 314, PG 609

CURVE DATA:
1
DELTA = 6°45'49"
RADIUS = 890.00'
LENGTH = 105.06'
TAN. = 52.59'
CHORD = 105.00'
CB = N43°05'40"E

PLAT RECORDED IN
P.B. NO. 78 PAGE 39
Williamstburg/James City County, VA
Recorded 5/17/89 day of MAY 1989
DOCUMENT # 0001624 (1-34 Pm)
James E. Mitchell Clerk
DETSY B. WOOLRIDGE, CLERK OF CIRCUIT COURT

FLOOD NOTE:
THE PROPERTY IS IN FLOOD ZONE "X"
AREAS DETERMINED TO BE OUTSIDE OF
THE 600-YEAR FLOODPLAIN, PER
COMMUNITY PANEL No. 610201 0030 B,
PREPARED BY THE FEDERAL EMERGENCY
MANAGEMENT AGENCY, EFFECTIVE DATE
FEBRUARY 6, 1981.