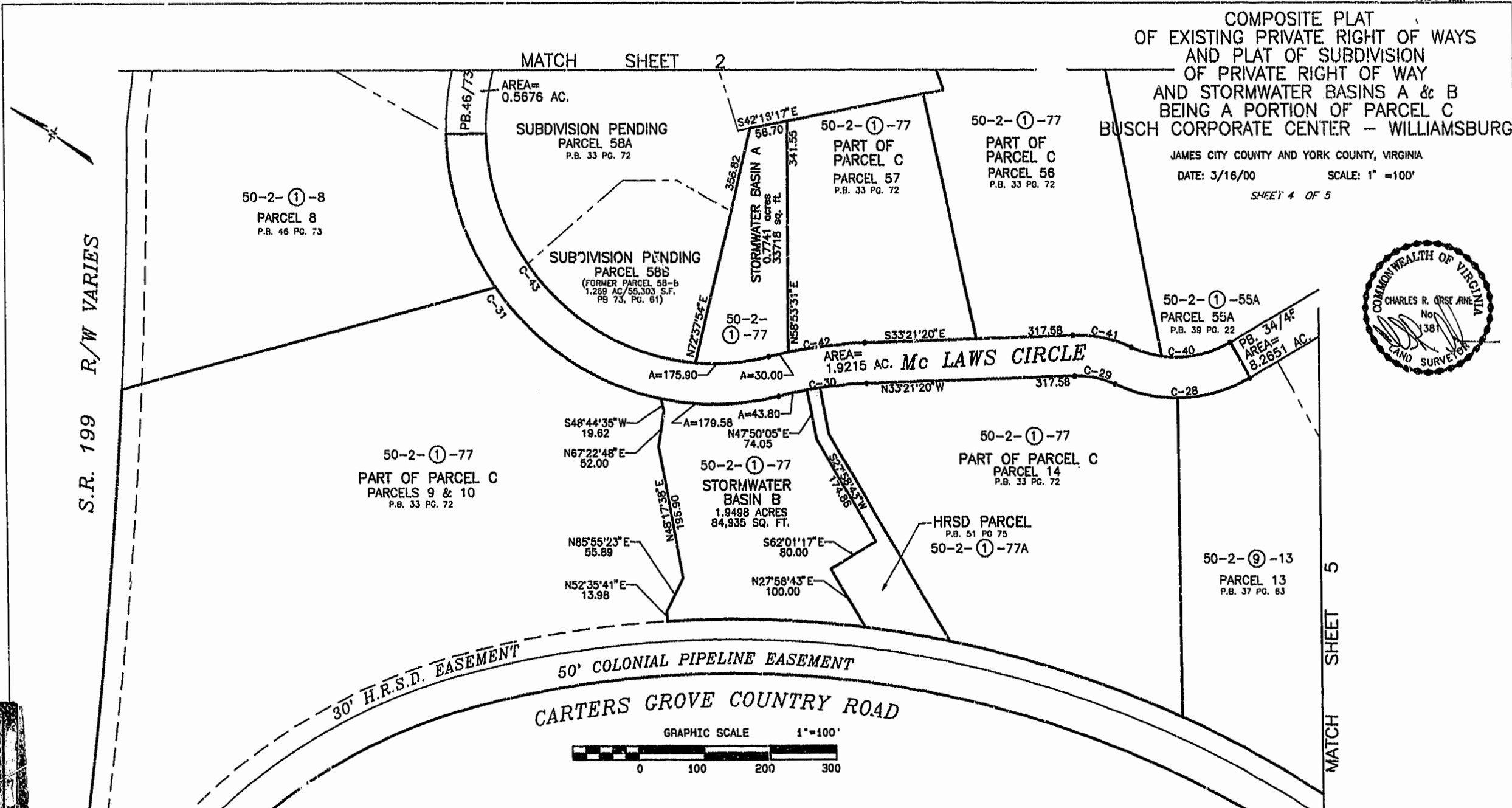
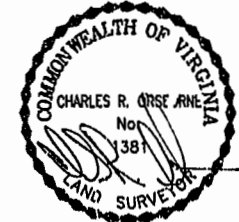


COMPOSITE PLAT
OF EXISTING PRIVATE RIGHT OF WAYS
AND PLAT OF SUBDIVISION
OF PRIVATE RIGHT OF WAY
AND STORMWATER BASINS A & B
BEING A PORTION OF PARCEL C
BUSCH CORPORATE CENTER - WILLIAMSBURG

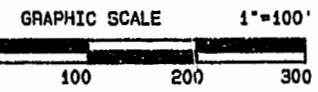
JAMES CITY COUNTY AND YORK COUNTY, VIRGINIA
DATE: 3/16/00 SCALE: 1" = 100'
SHEET 4 OF 5



S.R. 199 R/W VARIES

MATCH SHEET 5

50' COLONIAL PIPELINE EASEMENT
30' H.R.S.D. EASEMENT
CARTERS GROVE COUNTRY ROAD



LINE	RADIUS	ARC	CHORD BEARING	CHORD	DELTA
C-1	405.98'	178.16'	S68°11'35"W	176.73'	25°08'38"
C-2	30.00'	44.69'	S38°05'35"W	40.67'	85°20'38"
C-3	338.87'	224.75'	S23°34'44"E	220.65'	38°00'00"
C-4	377.00'	36.57'	S30°47'59"E	36.56'	05°33'29"
C-5	377.00'	482.46'	S15°45'33"W	450.21'	73°19'26"
C-6	436.00'	333.69'	S74°20'48"W	325.80'	43°51'03"
C-7	40.00'	60.12'	S53°12'42"E	54.82'	86°07'15"
C-8	917.32'	123.76'	S06°17'10"W	123.67'	07°43'49"
C-9	371.00'	518.01'	S37°34'44"E	476.95'	80°00'00"
C-10	213.08'	150.27'	S57°22'34"E	147.17'	40°24'20"
C-11	40.00'	58.78'	S79°16'28"E	53.64'	84°12'08"
C-12	40.00'	82.97'	N00°48'06"W	68.88'	118°51'09"
C-13	141.58'	42.87'	N68°54'13"W	42.70'	17°21'11"
C-14	475.00'	457.42'	N49°59'28"W	439.95'	55°10'33"
C-15	30.00'	43.55'	N63°59'28"W	39.83'	83°10'32"
C-16	320.00'	139.83'	S61°55'16"W	138.52'	25°00'00"
C-17	330.00'	339.81'	S78°55'18"W	324.99'	58°59'56"
C-18	64.00'	285.79'	N56°20'48"E	100.97'	255°51'04"
C-19	28.00'	34.42'	S33°39'12"E	31.98'	75°51'04"
C-20	270.00'	277.95'	N78°55'47"E	265.84'	58°58'58"
C-21	380.00'	165.81'	N61°55'14"E	164.50'	25°00'03"
C-22	29.00'	42.26'	N32°40'57"E	38.62'	83°29'23"
C-23	86.00'	22.09'	N06°55'38"E	22.03'	14°42'52"

C-24	164.00'	20.63'	N10°41'02"E	20.61'	07°12'24"
C-25	979.61'	158.42'	N11°42'48"E	158.25'	09°15'57"
C-26	29.00'	40.85'	N24°00'39"W	37.56'	80°42'52"
C-27	436.00'	25.03'	N62°43'24"W	25.03'	03°17'21"
C-28	225.20'	213.24'	N33°57'12"W	205.36'	54°15'05"
C-29	134.66'	62.35'	N20°05'29"W	61.79'	26°31'41"
C-30	653.54'	135.31'	N39°17'12"W	135.06'	11°51'44"
C-31	404.74'	938.48'	N21°12'33"E	741.92'	132°51'14"
C-32	440.00'	276.66'	S74°21'03"E	272.13'	36°01'35"
C-33	452.00'	45.97'	S52°59'34"E	45.95'	05°49'40"
C-34	320.00'	413.36'	S87°05'04"E	38.21'	74°00'40"
C-35	393.98'	178.99'	S63°05'37"E	177.45'	26°01'47"
C-36	30.00'	40.62'	S37°19'01"E	37.59'	77°35'00"
C-37	651.37'	500.82'	S20°33'06"E	488.57'	44°03'10"
C-38	317.00'	525.61'	S04°55'16"W	467.43'	95°00'00"
C-39	376.00'	436.40'	S85°40'16"W	412.32'	66°30'00"
C-40	165.20'	156.42'	N33°57'12"W	150.64'	54°15'05"
C-41	194.66'	90.13'	N20°05'29"W	89.33'	26°31'41"
C-42	713.54'	147.73'	N39°17'12"W	147.46'	11°51'44"
C-43	344.74'	799.35'	N21°12'33"E	631.94'	132°51'14"
C-44	380.00'	280.44'	S71°13'17"E	274.12'	42°17'06"
C-45	1680.00'	300.02'	S29°34'17"E	299.63'	10°13'56"

Williamsburg City County
Recorded 10 day of July 2000
DOCUMENT # 000013827
CLERK OF CIRCUIT COURT

PLAT RECORDED
P.B. NO. 78 PAGE 21-22

LANDMARK DESIGN GROUP
Engineers • Planners • Surveyors
Landscape Architects • Environmental Consultants