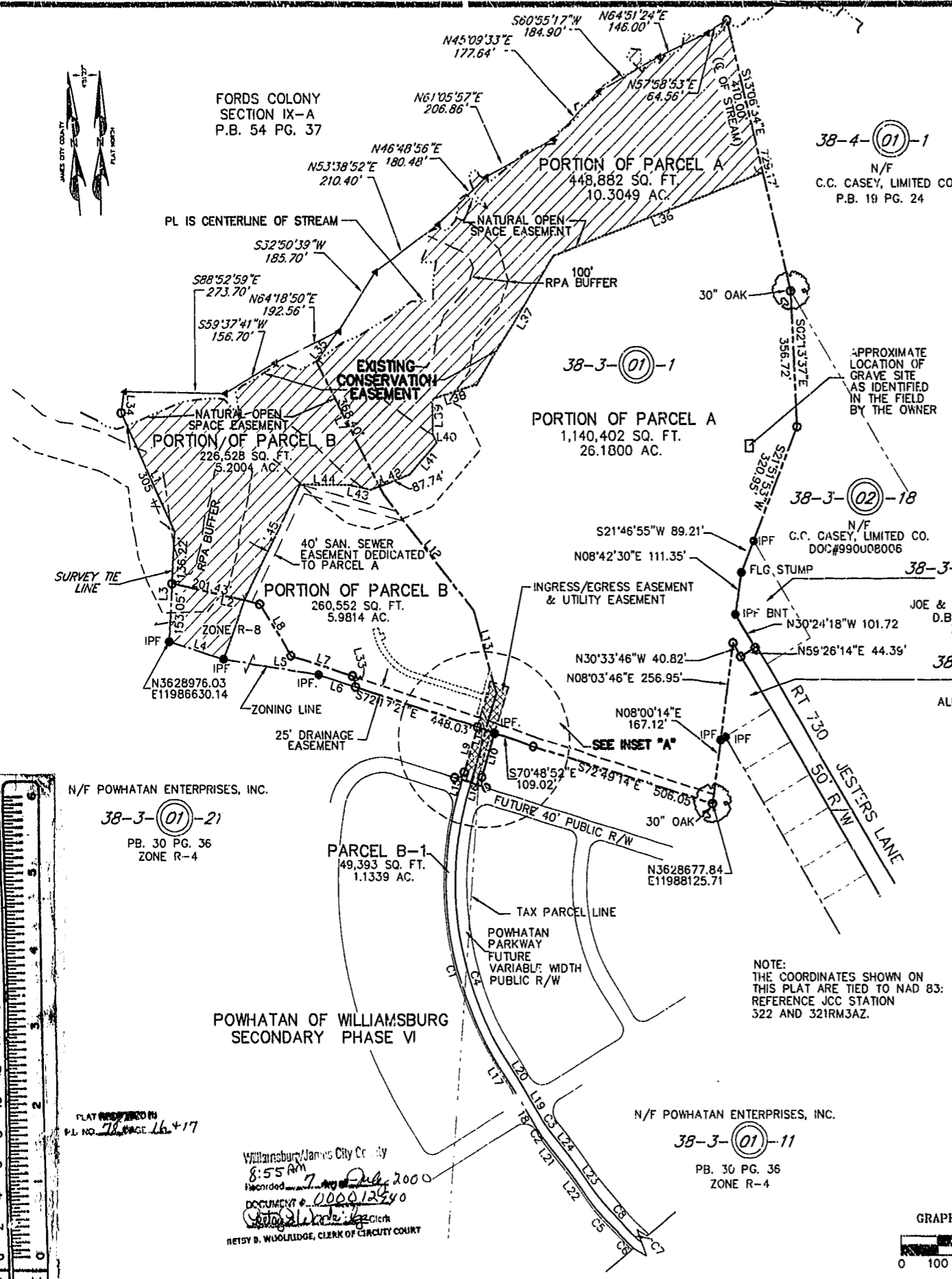




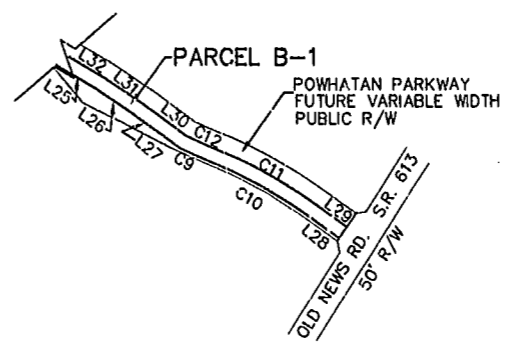
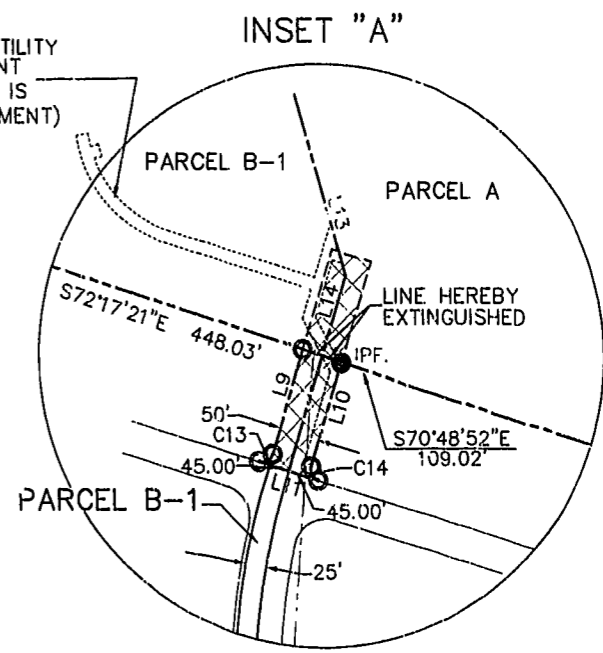
FORDS COLONY SECTION IX-A P.B. 54 PG. 37

38-4-(01)-1 N/F C.C. CASEY, LIMITED CO. P.B. 19 PG. 24

- NOTE:
1. PARCELS A & B ARE ZONED R-8.
 2. ALL UTILITIES UNDERGROUND.
 3. PARCELS A AND B TO BE SERVED BY PUBLIC WATER AND SEWER.
 4. PARCEL B-1 TO BE EXTINGUISHED UPON DEDICATION OF POWHATAN PKWY AS A PUBLIC R/W
 5. CONSERVATION EASEMENT HAS BEEN GRANTED TO WILLIAMSBURG LAND CONSERVANCY.
 6. WETLANDS AND LAND WITHIN RESOURCE PROTECTION AREAS SHALL REMAIN IN A NATURAL UNDISTURBED STATE EXCEPT FOR THOSE ACTIVITIES PERMITTED BY SECTION 23-9(C)(1) OF THE JAMES CITY COUNTY CODE.
 7. NATURAL OPEN SPACE EASEMENTS SHALL REMAIN IN A NATURAL UNDISTURBED STATE EXCEPT FOR THOSE ACTIVITIES REFERENCED ON THE DEED OF EASEMENT.



15' JCSA UTILITY EASEMENT (Q OF PIPE IS Q OF EASEMENT)



NOTE: THE COORDINATES SHOWN ON THIS PLAT ARE TIED TO NAD 83: REFERENCE JCC STATION 322 AND 321RM3AZ.

N/F POWHATAN ENTERPRISES, INC. 38-3-(01)-21 PB. 30 PG. 36 ZONE R-4

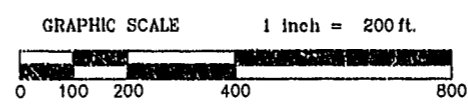
PARCEL B-1 49,393 SQ. FT. 1.1339 AC.

N/F POWHATAN ENTERPRISES, INC. 38-3-(01)-11 PB. 30 PG. 36 ZONE R-4

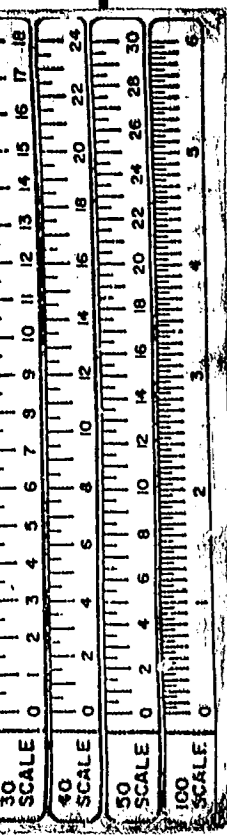
POWHATAN OF WILLIAMSBURG SECONDARY PHASE VI

SUBDIVISION AND BOUNDARY LINE ADJUSTMENT PLAT OF PROPERTY STANDING IN THE NAME OF POWHATAN ENTERPRISES, INC. JAMES CITY COUNTY VIRGINIA DECEMBER 14, 1999 SCALE: 1"=200'

SHEET 2 OF 2



Langley and McDonald, Inc.
 Engineers • Surveyors • Planners
 Landscape Architects • Environmental Consultants
 VIRGINIA BEACH WILLIAMSBURG



Williamsburg/James City County
 8:55 AM
 Recorded 7 Aug 2000
 DOCUMENT # 00001240
 METSY B. WOODLIDGE, CLERK OF CIRCUIT COURT