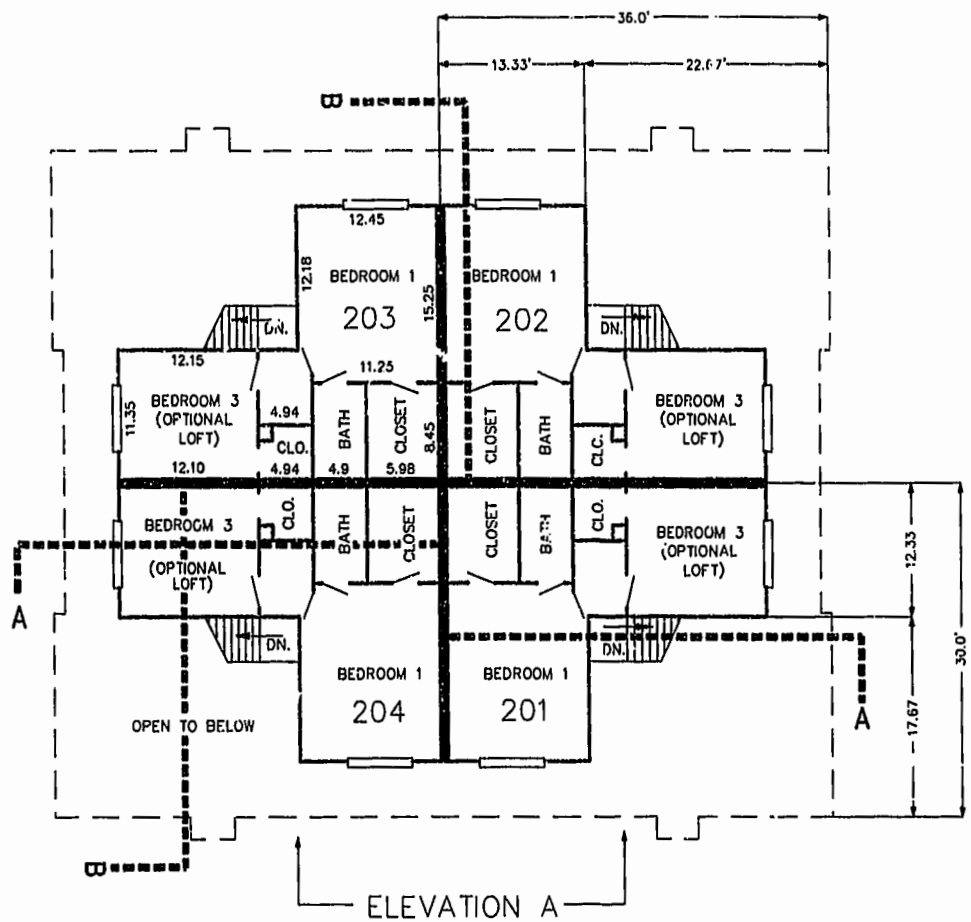
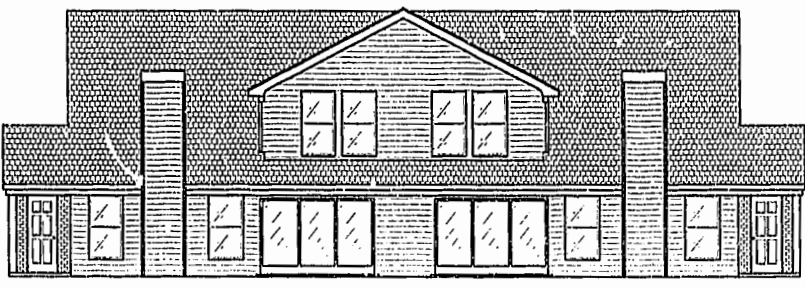


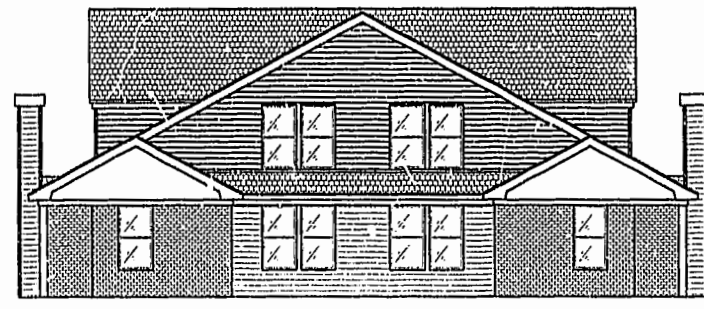
FIRST FLOOR PLAN
(UNIT #203 IS TYPICAL)



SECOND FLOOR PLAN
(UNIT #203 IS TYPICAL)

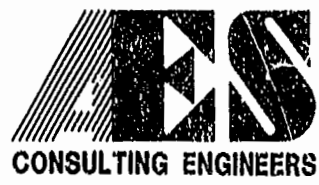


ELEVATION A



ELEVATION B

PLAT RECORDED IN
PAGE NO. 78, PAGE 10-15



5248 Olde Towne Road, Suite 1
Williamsburg, Virginia 23188
(757) 253-0040
Fax (757) 220-8994

PLAT OF CONDOMINIUM
WESTGATE AT WILLIAMSBURG,
A CONDOMINIUM
PHASE SEVEN
OWNED BY: 752 L.L.C.,
A VIRGINIA LIMITED LIABILITY COMPANY
CITY OF WILLIAMSBURG VIRGINIA



| | | | |
|--|------|----------------------------|----|
| Williamsburg James City County | | | |
| 3-19-00 | | Recorded 5 day of Feb 2000 | |
| DOCUMENT # 000698 | | | |
| REVISY & WOODRIDGE, CLERK OF CIRCUIT COURT | | | |
| No. | DATE | REVISION / COMMENT / NOTE | BY |

| | |
|-----------------------|-----------------|
| Designed GTW/ADS | Drawn JFS |
| Scale 1" = 10' | Date 2/03/00 |
| Project No. 8395-6 | |
| Drawing No. 5 OF 6 | |