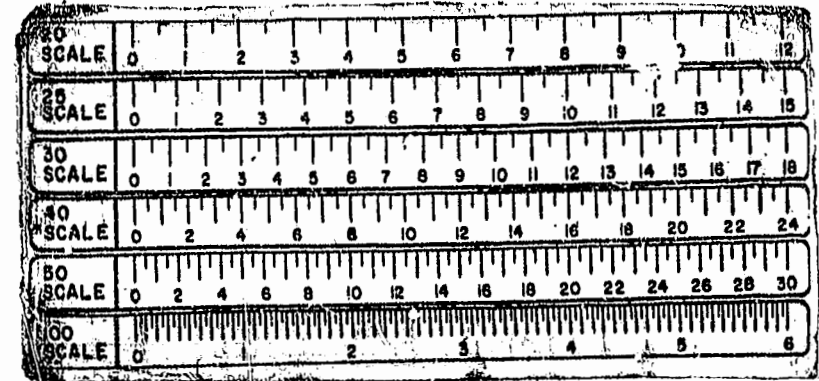


SECOND FLOOR BUILDING 22

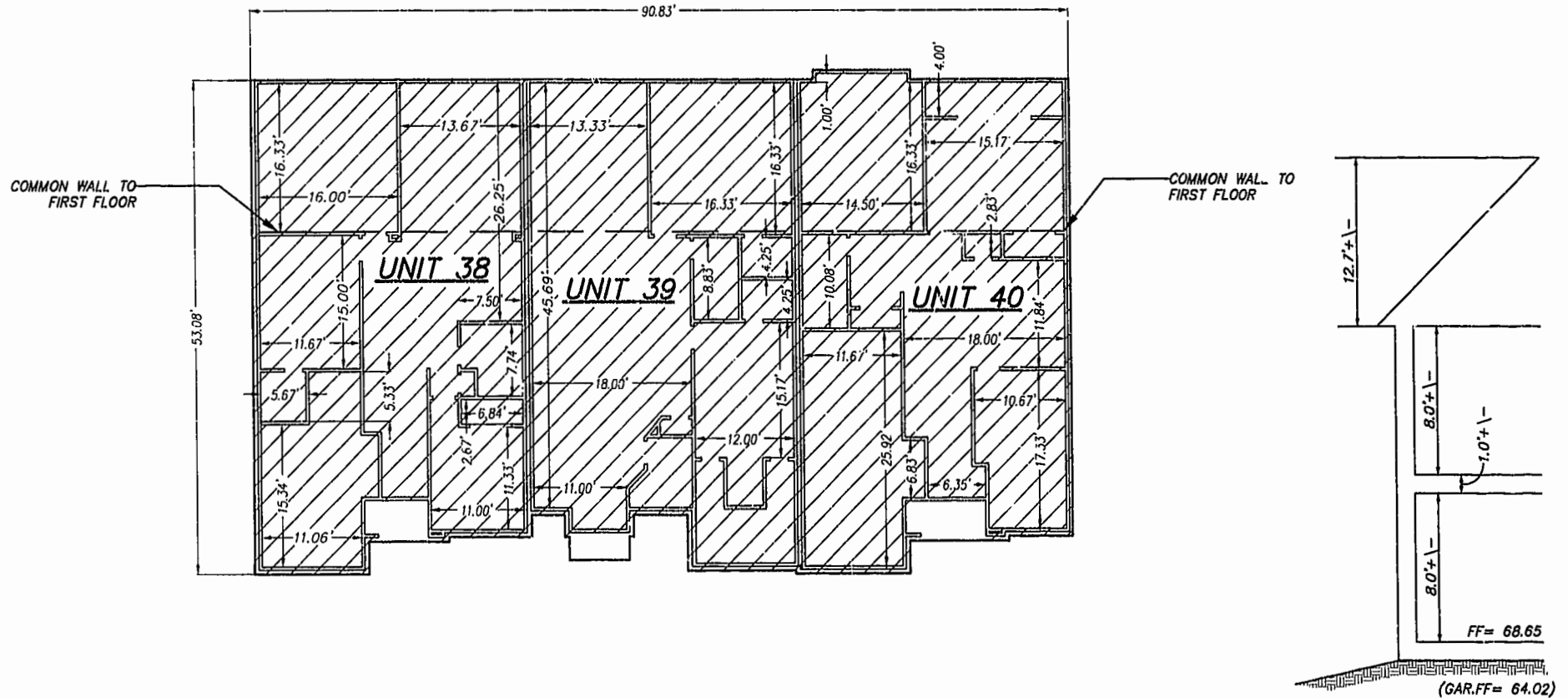
SCALE: 1" = 10'



**EXHIBIT B-1
SUPPLEMENTAL CONDOMINIUM PLANS
OF
WYNDHAM PLANTATION
CONDOMINIUM**

WILLIAMSBURG, VIRGINIA

DATE: JUNE 20, 2000 SCALE: 1"=10'



NOTES:

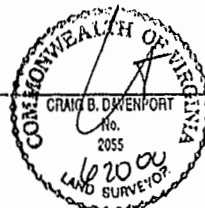
1) BUILDING DIMENSIONS SHOWN HEREON ARE INTERIOR DIMENSIONS. THESE DIMENSIONS ARE IN FEET AND WERE TAKEN FROM PLANS SUPPLIED ENTITLED "WYNDHAM PLANTATION AT WILLIAMSBURG, FLOOR PLANS" BY PROGRESSIVE DESIGNS DATED 11/19/98

2) INTERIOR UNIT CONFIGURATIONS AND PARTITIONS AS DEPICTED HEREON ARE FOR THE PURPOSE OF ILLUSTRATION ONLY AND MAY NOT REPRESENT THE INTERIOR OF A UNIT AS ACTUALLY CONSTRUCTED.

PHASE	UNIT No.	UNIT ADDRESS	UNIT AREA
1	38	43 ZELKOVA DRIVE	1,799 S.F.
1	39	441 ZELKOVA DRIVE	1,957 S.F.
1	40	445 ZELKOVA DRIVE	1,853 S.F.

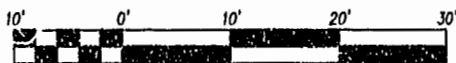
I HEREBY CERTIFY THAT THIS PLAN IS ACCURATE AND THAT IT COMPLIES WITH SECTION 55-79.58(B) OF THE VIRGINIA CONDOMINIUM ACT AS AMENDED AND THAT ALL UNITS OR PORTIONS THEREOF DEPICTED HEREON HAVE BEEN SUBSTANTIALLY COMPLETED EXCEPT AS OTHERWISE NOTED.

SIGNED:



DATE:

6/20/00



SCALE 1"=10'

2:52 pm 30 day of June 2000
 Recd. by [Signature]
 DOCUMENT # 000678
 By [Signature] Clerk
 By Claudia Kilduff Sr. Clerk

Rickmond Engineering, Inc.

1643 Merrimac Trail
 Williamsburg VA 23185
 Voice: (757) 229-1776
 Fax No. (757) 229-4683

Engineering
 Surveying
 Land Planning
 www.rickmond.com

PLAT RECORDED IN
 P.D. NO. 78 PAGE 10-9