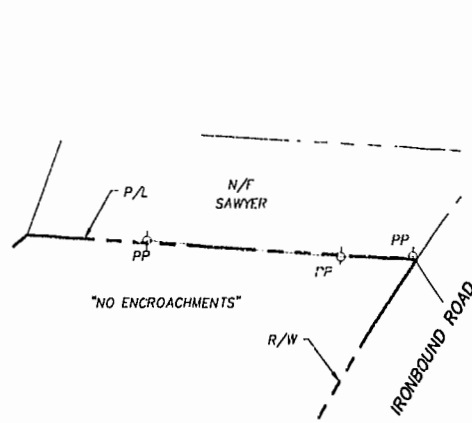
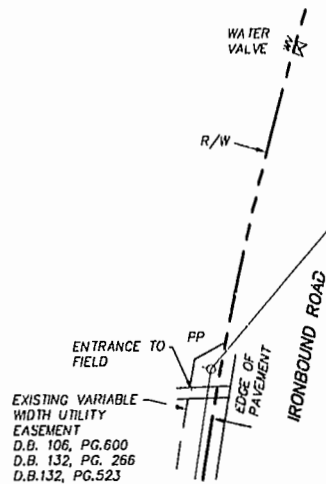


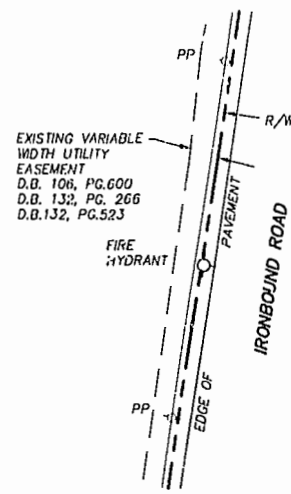
JAMES CITY COUNTY  
GEODETIC CONTROL MERIDIAN



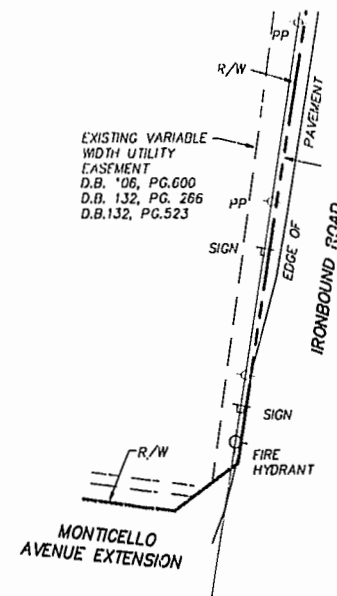
**DETAIL 2**  
SCALE: 1"=100'



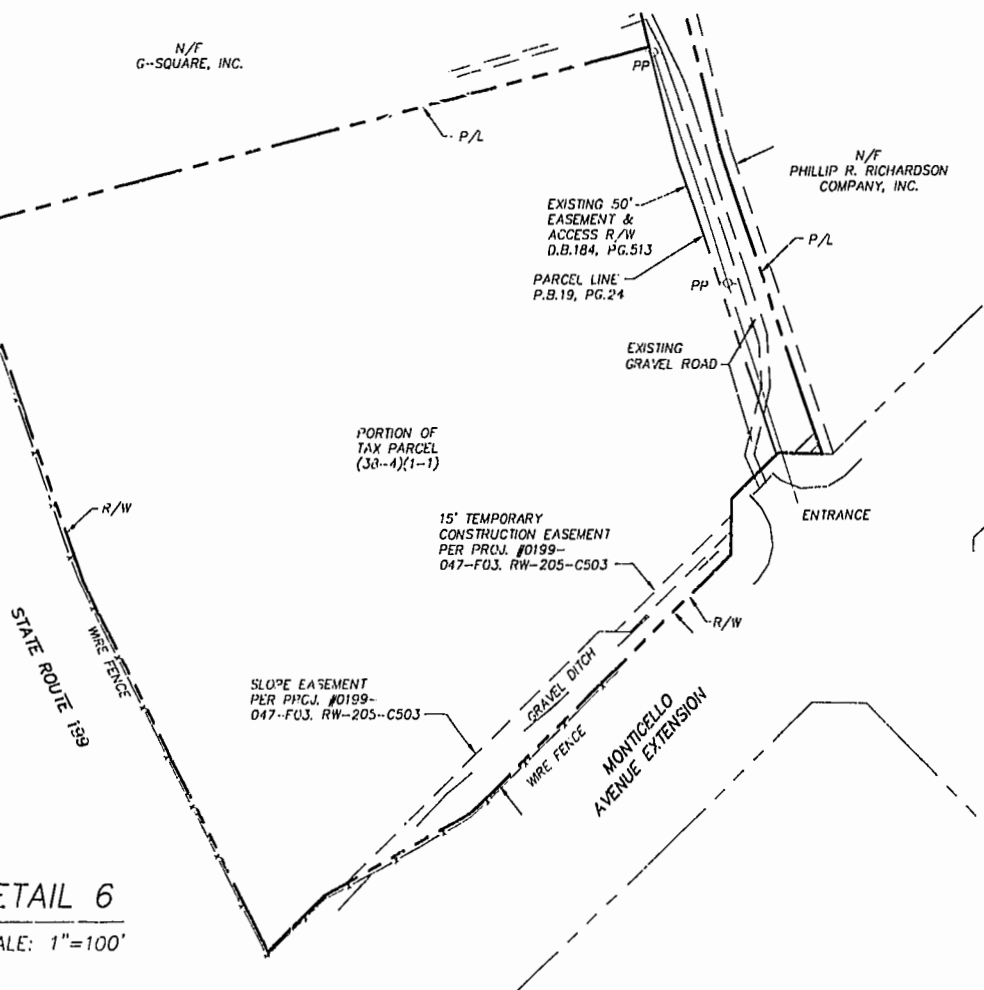
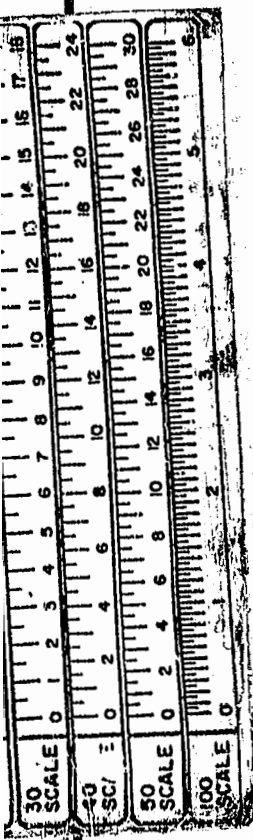
**DETAIL 3**  
SCALE: 1"=100'



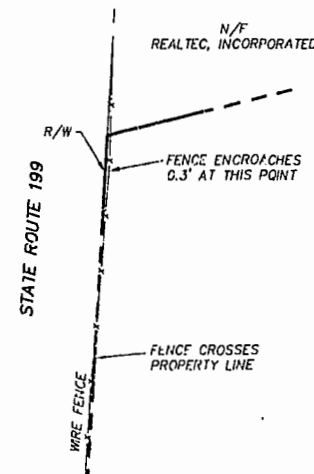
**DETAIL 4**  
SCALE: 1"=100'



**DETAIL 5**  
SCALE: 1"=100'



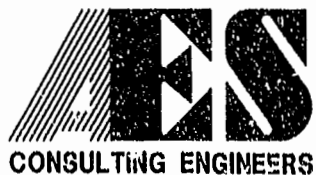
**DETAIL 6**  
SCALE: 1"=100'



**DETAIL 7**  
SCALE: 1"=100'

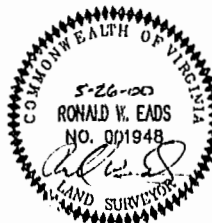
Williamsburg/James City County  
Recorded 25 day of June, 2000  
DOCUMENT # 200002572  
BETSY B. WOOLRIDGE, CLERK OF CIRCUIT COURT

77 PAGE 24-96



5248 Olde Towne Road, Suite 1  
Williamsburg, Virginia 23188  
(757) 253-0040  
Fax (757) 220-8994

ALTA/ACSM LAND TITLE SURVEY  
PORTION OF PROPERTY OWNED BY  
**C. C. CASEY LIMITED COMPANY**  
CONTAINING A TOTAL OF 300.714 ACRES  
BERKELEY DISTRICT JAMES CITY COUNTY VIRGINIA



No.	DATE	REVISION / COMMENT / NOTE	BY
4	6/7/00	REVISE PROPOSED SUBDIVISION LINE - SHEET #2	PWE
3	6/7/00	ADD STREAMS AND WATER COURSES - SHEET #2	RWE
2	6/7/00	REMOVE ZONING LINE ALONG IRONBOUND RD. - SHEET #2	RWE
1	6/7/00	REVISED SCHEDULE "B" EXCEPTION NOTES - SHEET #1	RWE

PWM	PWM
Scale	Date
1"=400'	5/26/00
Project No.	
6632-10	
Drawing No.	
3 OF 3	