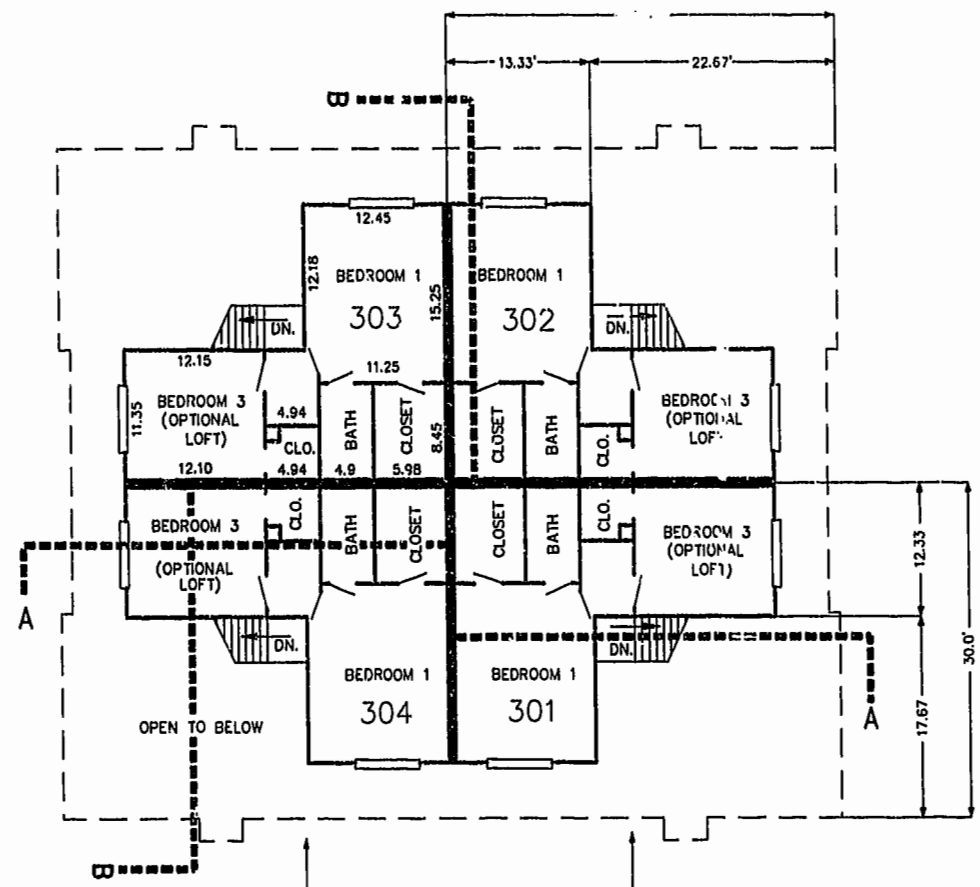
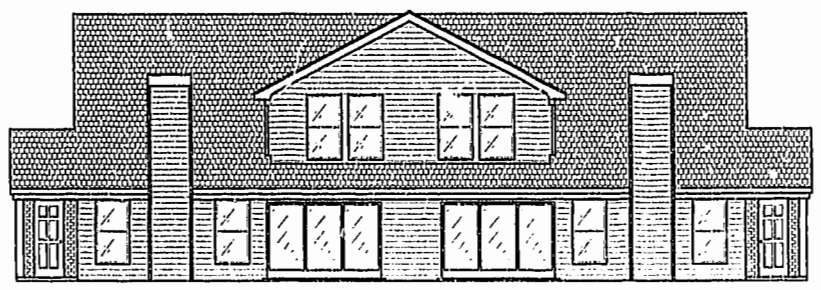


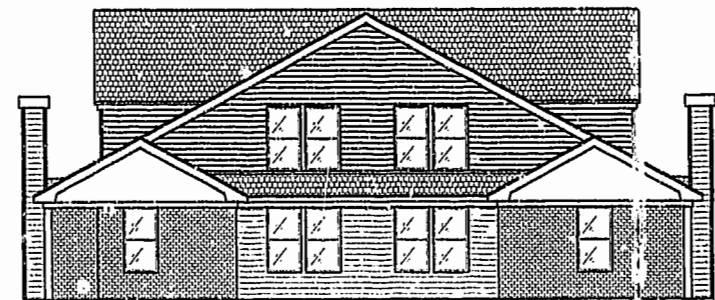
ELEVATION A  
FIRST FLOOR PLAN  
(UNIT #303 IS TYPICAL)  
(UNIT #302 IS TYPICAL EXCEPT AS NOTED)



ELEVATION A  
SECOND FLOOR PLAN  
(UNIT #303 IS TYPICAL)



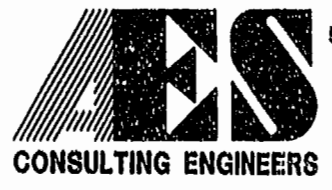
ELEVATION A



ELEVATION B



Williamsburg/James City County  
12.13.00  
21 Jan 2001  
000630  
RETSY B. WOOLRIDGE, CLERK OF CIRCUIT COURT



5248 Olde Towne Road, Suite 1  
Williamsburg, Virginia 23188  
(757) 253-0040  
Fax (757) 220-8994

PLAT OF CONDOMINIUM  
WESTGATE AT WILLIAMSBURG,  
A CONDOMINIUM  
PHASE SIX  
OWNED BY: 752 L.L.C.,  
A VIRGINIA LIMITED LIABILITY COMPANY  
CITY OF WILLIAMSBURG VIRGINIA



No.	DATE	REVISION / COMMENT / NOTE	BY

Designed GTW/ADS	Drawn JFS
Scale 1" = 10'	Date 2/01/00
Project No. 8395-6	
Drawing No. 5 OF 6	