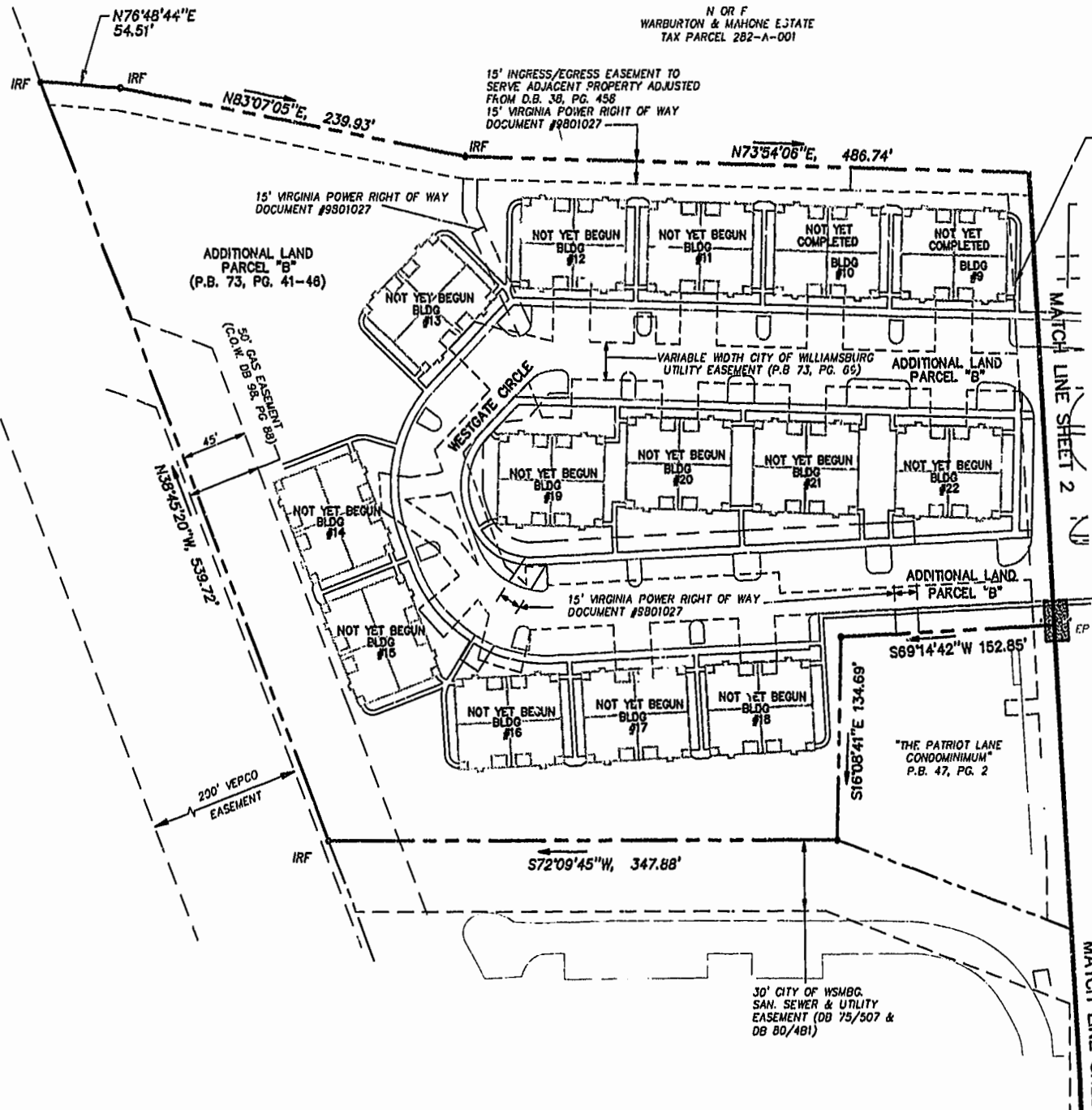
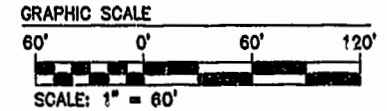
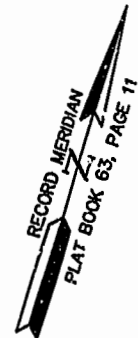


N/F JAMESTOWN ACADEMY TAX PARCEL 281-03-A



VARIABLE WIDTH CITY OF WILLIAMSBURG SAN. SEWER & UTILITY EASEMENT (P.B. 75/507 & DB 80/481)



MATCH LINE SHEET 2

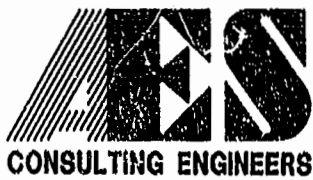
02-21-00-08-57

NOTE: AT THE TIME OF THIS SURVEY ROADS AND SIDEWALK ARE UNDER CONSTRUCTION. (PROPOSED LOCATION SHOWN). WATER & SANITARY SYSTEM ARE IN PLACE.

"THE PATRIOT CONDOMINIUM" TAX PARCEL 281-01-02-A P.B. 35, PG. 119

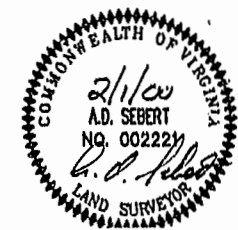
PLAT RECORDED IN P.B. NO. 11 PAGE 83-88

Williamsburg/James City County  
Recorded 21 day of June 2000  
DOCUMENT # 000630  
Betsy S. Woolridge, Clerk of Circuit Court



5248 Olde Towne Road, Suite 1  
Williamsburg, Virginia 23188  
(757) 253-0040  
Fax (757) 220-8994

PLAT OF CONDOMINIUM  
WESTGATE AT WILLIAMSBURG,  
A CONDOMINIUM  
PHASE SIX  
OWNED BY: 752 L.L.C.,  
A VIRGINIA LIMITED LIABILITY COMPANY  
CITY OF WILLIAMSBURG VIRGINIA



No.	DATE	REVISION / COMMENT / NOTE	BY

Designed GTW/ADS	Drawn Jr's
Scale 1" = 60'	Date .2/01/00
Project No. 8395-6	
Drawing No. 3 OF 6	