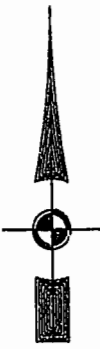


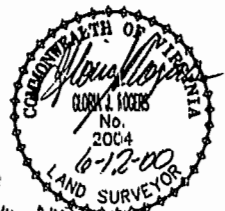
EXIST. 20' JAMES CITY COUNTY SERVICE AUTHORITY SAN. SEWER EASEMENT AS SHOWN IN AS-BUILT LOCATION, D.B. 141 - PG. 388



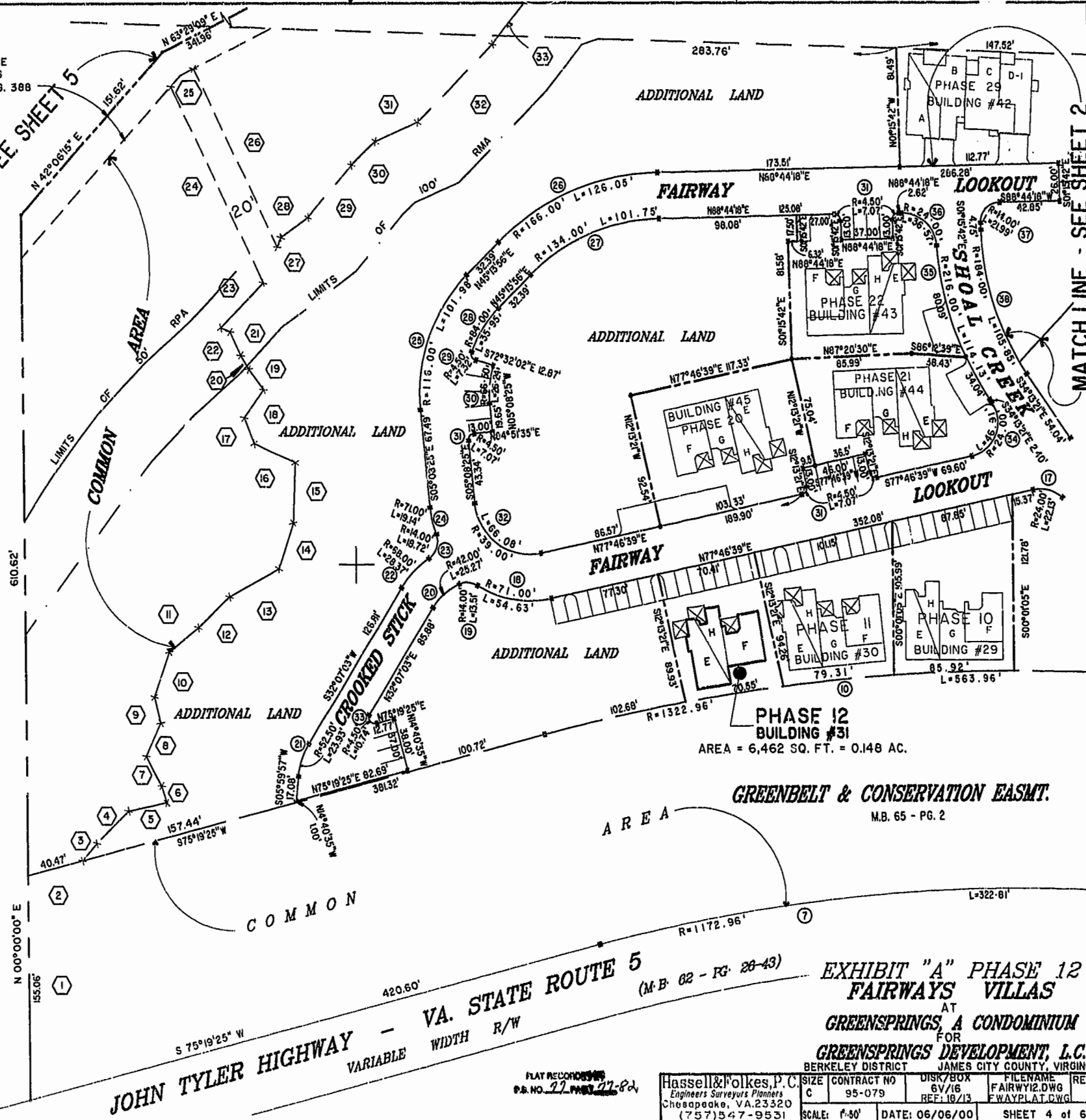
MATCH LINE - SEE SHEET 5

MATCH LINE - SEE SHEET 2

46-1-01-0-0001  
"GREENSPRINGS PLANTATION"  
(DB 322, PG 254)



William H. Woolbridge, Jr. Clerk of Circuit Court  
10-12-00  
DOCUMENT # 111001034  
Woolbridge & Associates, Inc.



PHASE 12 BUILDING #31  
AREA = 6,462 SQ. FT. = 0.148 AC.

GREENBELT & CONSERVATION EASMT.  
M.B. 65 - PG. 2

VA. STATE ROUTE 5 (M.B. 62 - PG. 28-43)  
JOHN TYLER HIGHWAY - VARIABLE WIDTH R/W

EXHIBIT "A" PHASE 12 FAIRWAYS VILLAS AT GREENSPRINGS, A CONDOMINIUM FOR GREENSPRINGS DEVELOPMENT, L.C. BERKELEY DISTRICT JAMES CITY COUNTY, VIRGINIA

Hassell & Polkes, P.C. Engineers Surveyors Planners Chesapeake, VA. 23320 (757) 547-9531	SIZE	CONTRACT NO	DISK/BOX	FILENAME	REV.
	C	95-079	6V/16	FAIRWAY12.DWG	
SCALE: 1"=50'	DATE: 06/06/00	SHEET 4 of 6			

PLAT RECORDED  
P.B. NO. 27 PAGE 27-28