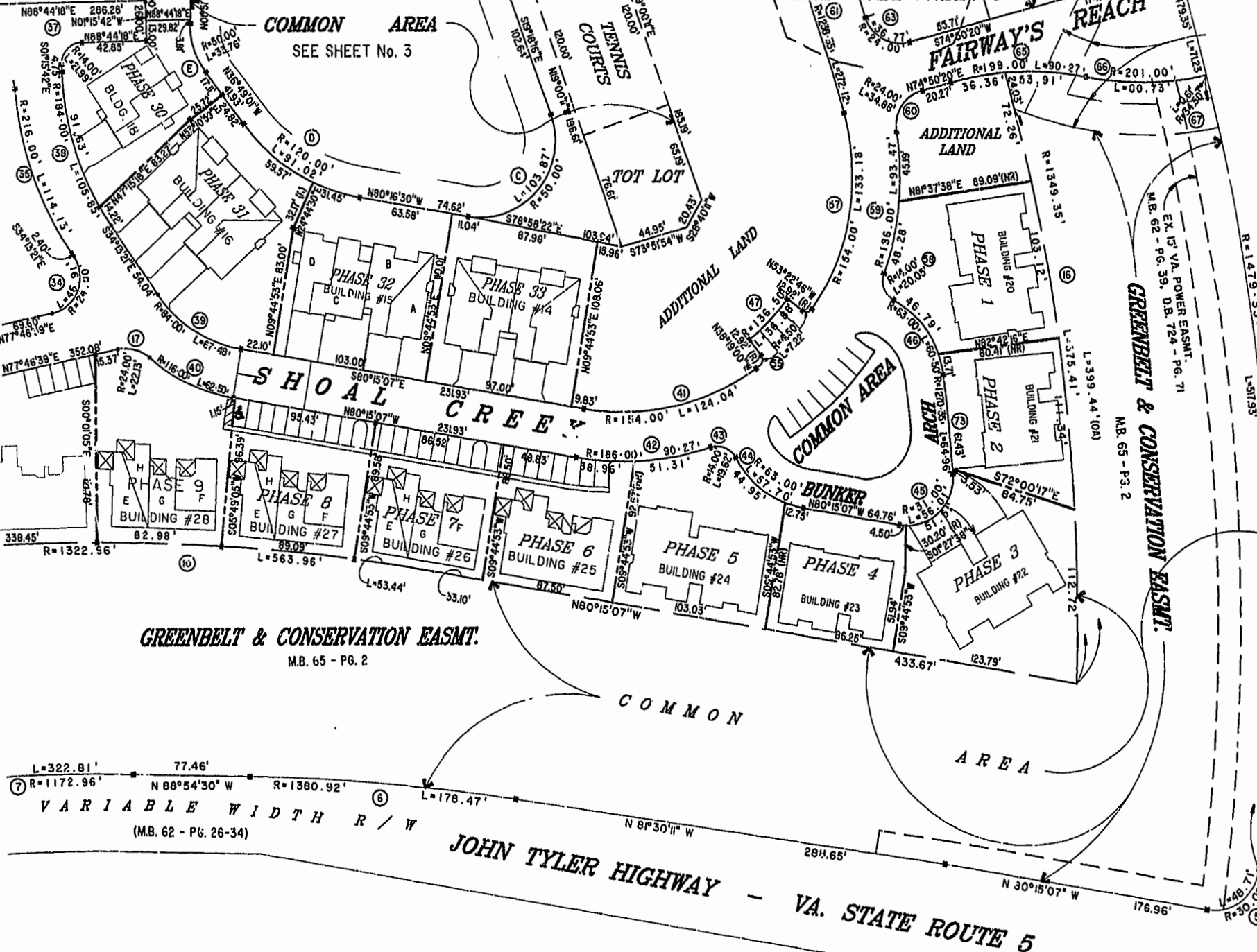


MATCH LINE SEE SHEET 4

MATCH LINE - SEE SHEET 3

COMMON AREA

SEE SHEET No. 3



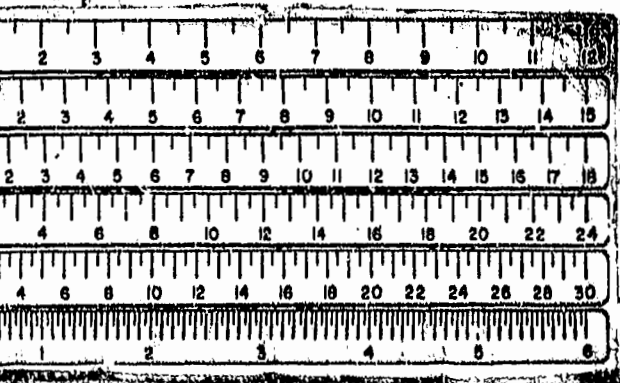
LEGACY VARIABLE WIDTH R/W (M.B. 62 - PG. 26-34)

DRIVE

GREENBELT & CONSERVATION EASMT. M.B. 65 - PG. 2

VARIABLE WIDTH R/W (M.B. 62 - PG. 26-34)

JOHN TYLER HIGHWAY - VA. STATE ROUTE 5



PLAT RECORDED IN P.D. NO. 77 PAGE 22-82

Williamsburg James City County
 10:51 AM
 Recorded 21 day of June 2004
 DOCUMENT # 00001434
 Retsy B. Woolf, Clerk of Circuit Court

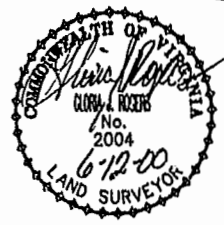


EXHIBIT "A" PHASE 12
 FAIRWAYS VILLAS
 AT
 GREENSPRINGS, A CONDOMINIUM
 FOR
 GREENSPRINGS DEVELOPMENT, L.C.

Hassell & Polkes, P.C. Engineers Surveyors Planners Chesapeake, VA 23320 (757) 547-9531		CONTRACT NO 95-079	DISK/BOX 6V/16 REF. 18/13	FILENAME FAIRWY12.DWG FAWAYPLAT.DWG	RE...
SCALE: 1"=50'	DATE: 06/06/00	SHEET 2 of 6			