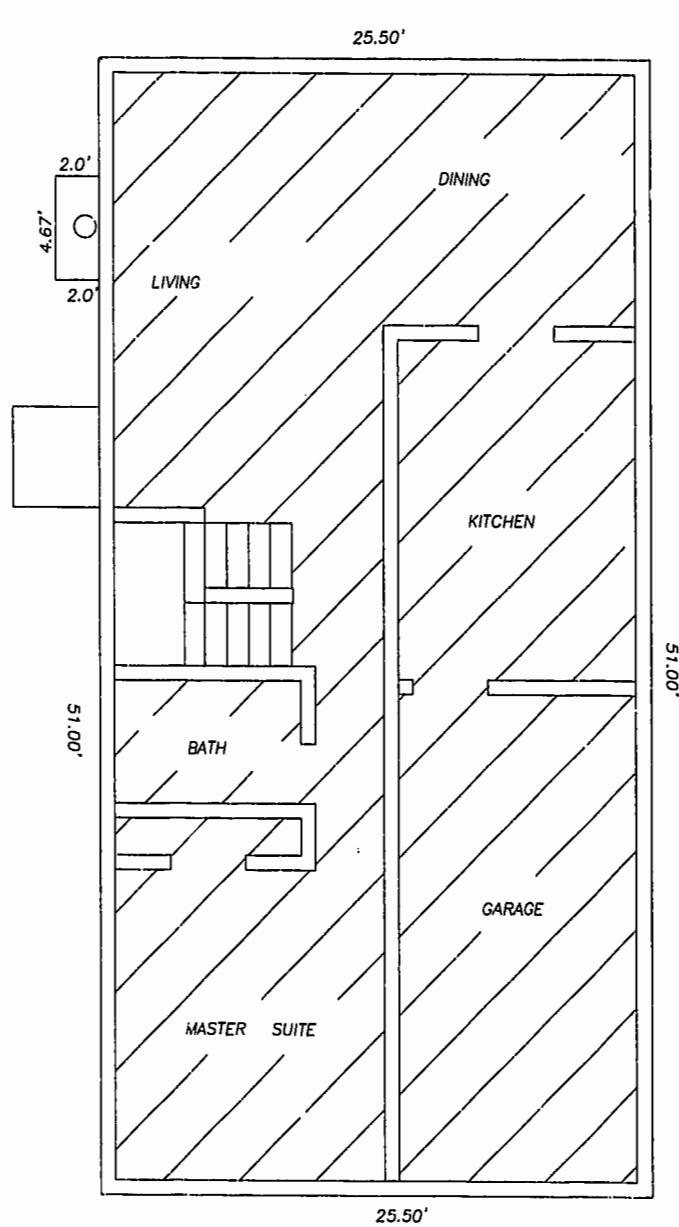
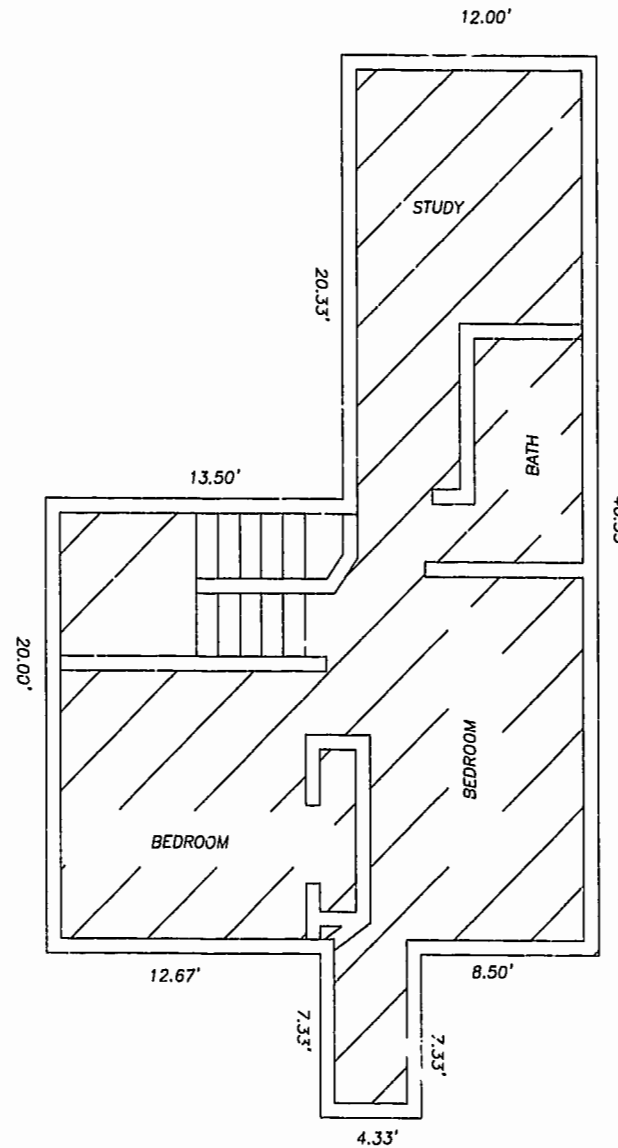


**NOTES:**

1. ALL BUILDING DIMENSIONS AND INTERIOR DIMENSIONS ARE IN FEET.
2. THE PORTION OF THE IMPROVEMENTS DESIGNATED AS A UNIT IS SUBJECT TO THE DEFINITION OF THE TERM "UNIT" IN THE DECLARATION. EXTERIOR WALLS, DIVIDING WALLS BETWEEN UNITS, AND COLUMNS OR LOAD BEARING MEMBERS WHICH SUPPORT MORE THAN ONE UNIT ARE NOT PART OF THE UNIT.
3. INTERIOR UNIT CONFIGURATIONS AND PARTITIONS AS DEPICTED HEREON ARE FOR ILLUSTRATION ONLY AND MAY NOT REPRESENT THE INTERIOR OF A UNIT AS ACTUALLY BUILT.



MODEL D  
FIRST FLOOR



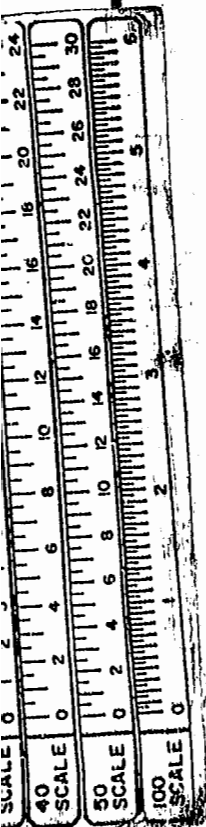
MODEL D  
SECOND FLOOR



THE UNDERSIGNED CERTIFIES THAT THESE PLANS ARE ACCURATE AND COMPLY WITH THE PROVISIONS OF CODE OF VIRGINIA, SECTION 55-79.58.B AND THAT ALL UNITS OR PORTIONS THEREOF DEPICTED HEREON AND ALL COMMON ELEMENTS HAVE BEEN SUBSTANTIALLY COMPLETED.

SIGNED: *W. Page Cockrell*  
W. PAGE COCKRELL, L.S.

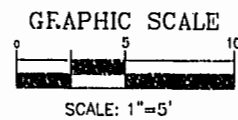
EXHIBIT B-5



RECORDED IN  
PAGE 66-70

LEGEND  
UNIT AREA

Williamsburg/James City County  
12:18 pm  
Recorded 31 day of May 2000  
DOCUMENT # 00000315  
By *Clayton W. ...*  
By *Claudia ...*



**SUPPLEMENTAL CONDOMINIUM PLAN  
OF  
CROMWELL RIDGE CONDOMINIUM  
JAMES CITY COUNTY, VIRGINIA**

DATE: 5/23/00	SHEET 4 OF 5	SCALE: 1"=5'
PROJECT NO: 30807.00		DRAWN BY: SAA

**VHIB** Vanasse Hangen Brustlin, Inc.  
Transportation Land Development Environmental Services  
11932 Rock Landing Drive, Suite 203  
Newport News, Virginia 23606  
(571) 873-3386 • FAX (571) 873-0757