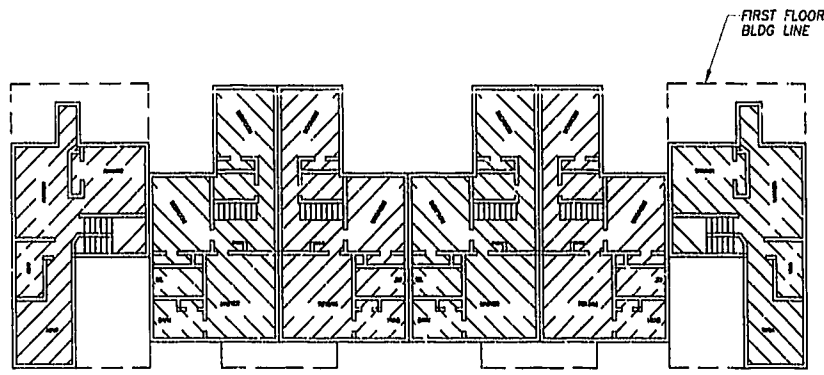
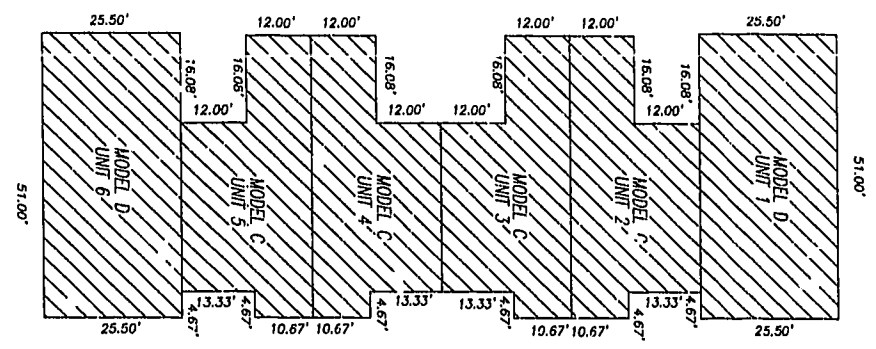


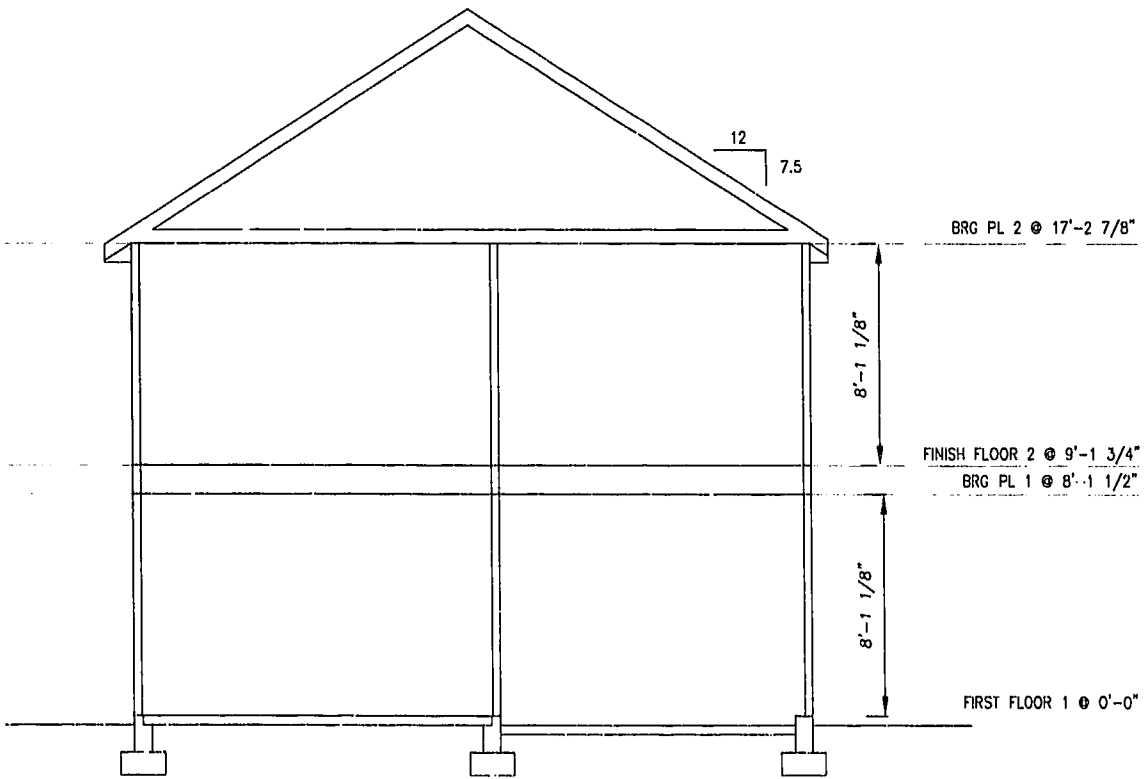
NOTE:
ALL BUILDING DIMENSIONS SHOWN ARE EXTERIOR DIMENSIONS



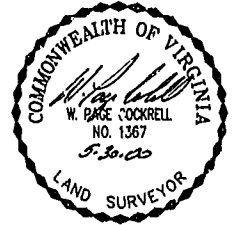
SECOND FLOOR



FIRST FLOOR



TYPICAL BUILDING SECTION



THE UNDERSIGNED CERTIFIES THAT THESE PLANS ARE ACCURATE AND COMPLY WITH THE PROVISIONS OF CODE OF VIRGINIA, SECTION 55-79.58.B AND THAT ALL UNITS OR PORTIONS THEREOF DEPICTED HEREON AND ALL COMMON ELEMENTS HAVE BEEN SUBSTANTIALLY COMPLETED.

SIGNED: *W. Page Cockrell*
W. PAGE COCKRELL, L.S.

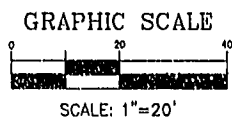
EXHIBIT B-5

SUPPLEMENTAL CONDOMINIUM PLAT
OF
CROMWELL RIDGE CONDOMINIUM
JAMES CITY COUNTY, VIRGINIA

DATE: 5/23/00 SHEET 3 OF 5 SCALE: 1"=20'
PROJECT NO: 30807.00 DRAWN BY: SAA

VHB Vanasse Hangen Brustlin, Inc.
Transportation Land Development Environmental Services
11832 Rock Landing Drive, Suite 201
Newport News, Virginia 23606
(757) 873-3386 • FAX (757) 873-0757

LEGEND
UNIT AREA



PLAT RECORDED IN
P.L. NO. 49, PAGE 166-710

Williamsburg/James City County
12:18 pm
Recorded 31 day of May 2000
DOCUMENT # 000010315
Sentry B. W. ... Clerk
By Chaudin ...

