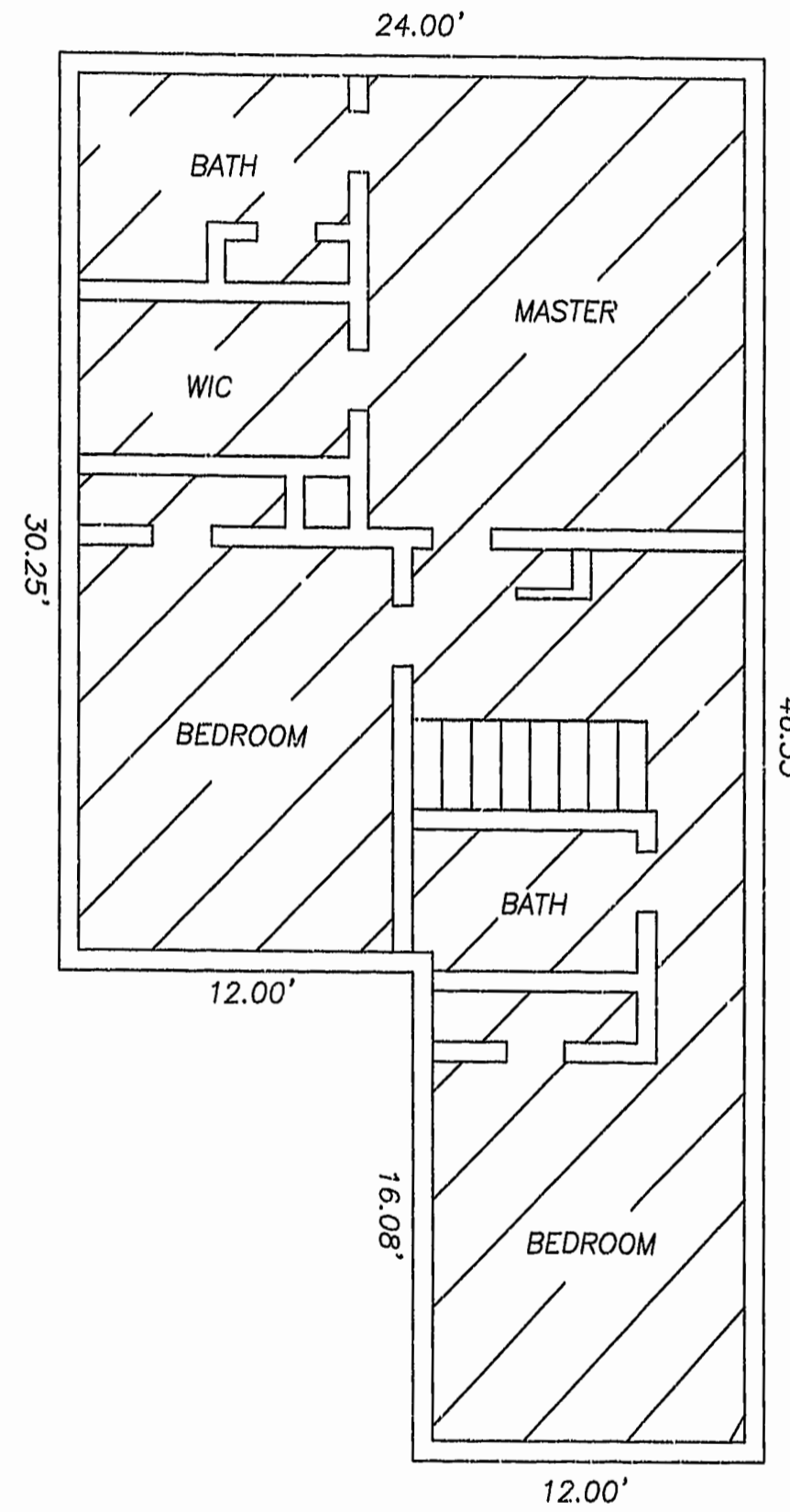
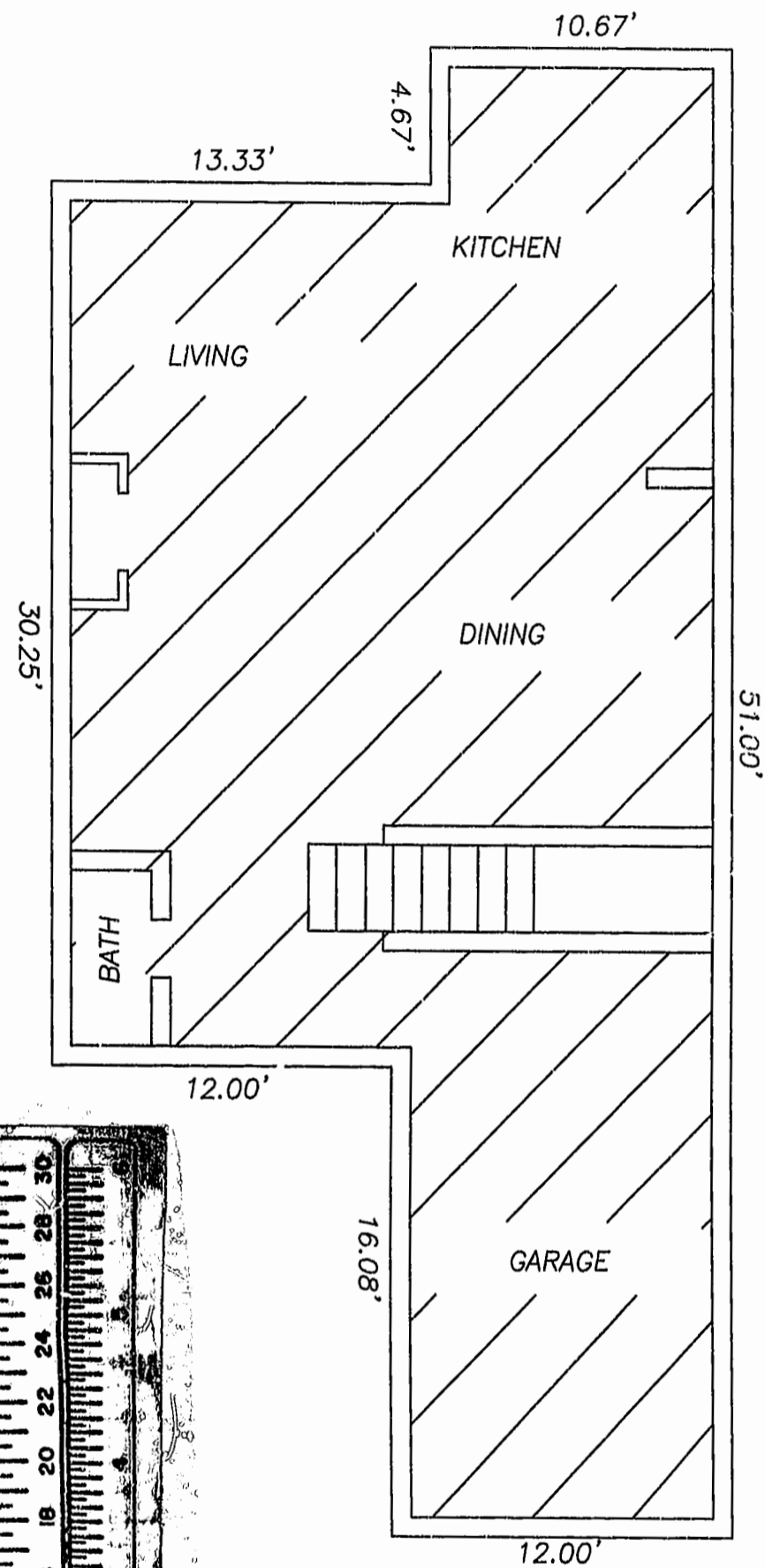


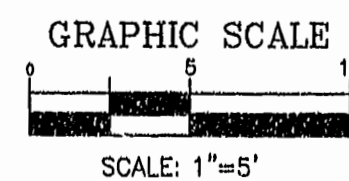
NOTES:

1. ALL BUILDING DIMENSIONS AND INTERIOR DIMENSIONS ARE IN FEET.
2. THE PORTION OF THE IMPROVEMENTS DESIGNATED AS A UNIT IS SUBJECT TO THE DEFINITION OF THE TERM "UNIT" IN THE DECLARATION. EXTERIOR WALLS, DIVIDING WALLS BETWEEN UNITS, AND COLUMNS OR LOAD BEARING MEMBERS WHICH SUPPORT MORE THAN ONE UNIT ARE NOT PART OF THE UNIT.
3. INTERIOR UNIT CONFIGURATIONS AND PARTITIONS AS DEPICTED HEREON ARE FOR ILLUSTRATION ONLY AND MAY NOT REPRESENT THE INTERIOR OF A UNIT AS ACTUALLY BUILT.



LEGEND
 UNIT AREA

3:29 pm
 Recorded 19 day of May 2000
 DOCUMENT # 00009564
 (Signature) Clerk



PLAT RECORDED IN
 P.D. NO. 77 PAGE 56-60



THE UNDERSIGNED CERTIFIES THAT THESE PLANS ARE ACCURATE AND COMPLY WITH THE PROVISIONS OF CODE OF VIRGINIA, SECTION 55-79.58B AND THAT ALL UNITS OR PORTIONS THEREOF DEPICTED HEREON AND ALL COMMON ELEMENTS HAVE BEEN SUBSTANTIALLY COMPLETED.

SIGNED: (Signature)
 W. PAGE COCKRELL, L.S.

EXHIBIT B-4

**SUPPLEMENTAL CONDOMINIUM PLAN
 OF
 CROMWELL RIDGE CONDOMINIUMS
 JAMES CITY COUNTY, VIRGINIA**

DATE: 4/12/00 SHEET 5 OF 5 SCALE: 1"=5'
 PROJECT NO: 30807.00 DRAWN BY: SAA

VHB Vanasse Hangen Brustlin, Inc.
 Transportation Land Development Environmental Services
 11832 Rock Landing Drive, Suite 103
 Newport News, Virginia 23606
 (757) 873-3386 • FAX (757) 373-0727