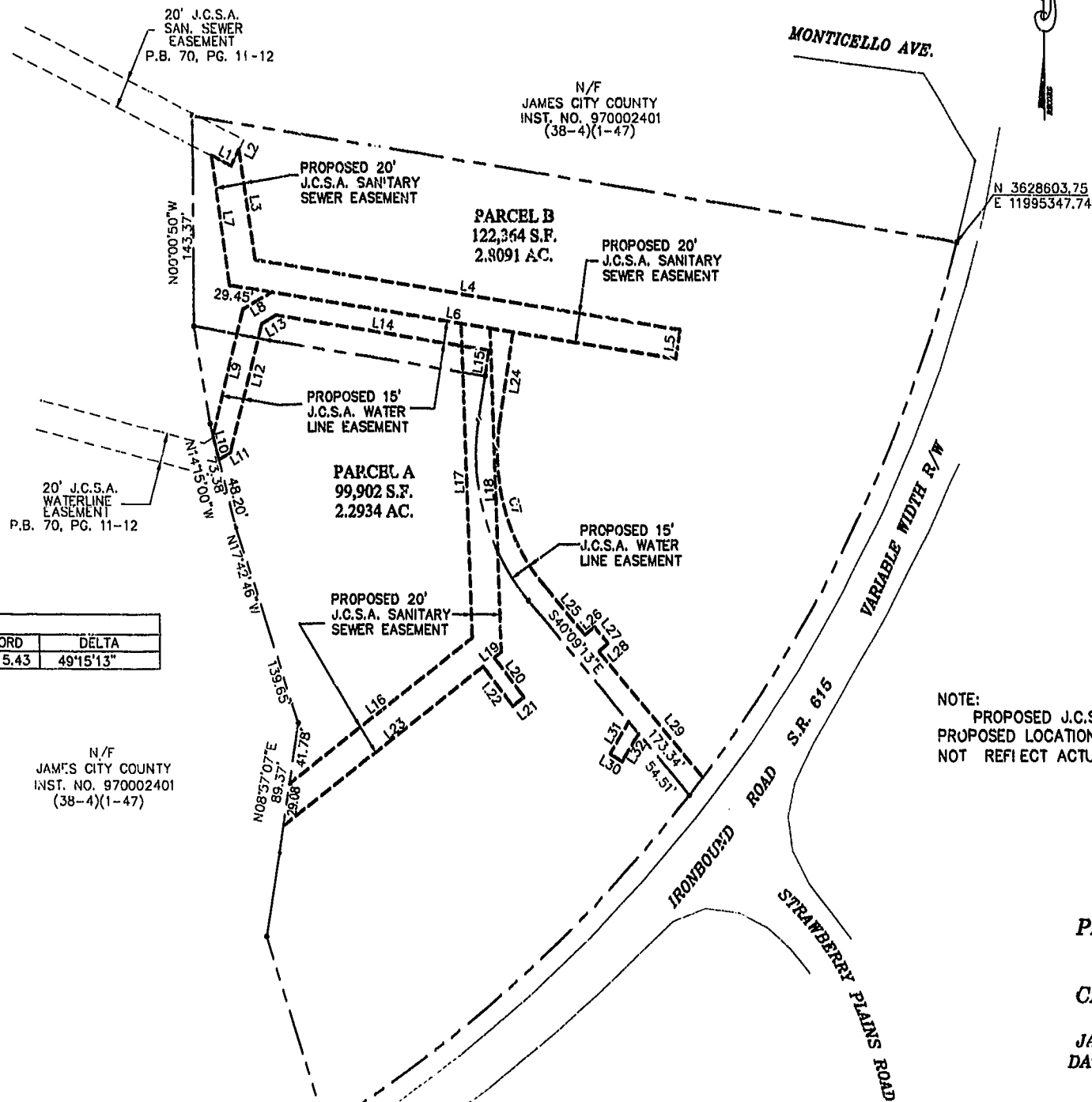




LINE TABLE		
LINE	LENGTH	BEARING
L1	15.87	S63°30'56"E
L2	12.21	N26°29'04"E
L3	75.83	S07°59'31"E
L4	302.13	S80°53'16"E
L5	20.00	S09°06'04"W
L6	316.90	S80°53'56"E
L7	89.52	S07°59'31"E
L8	23.04	N59°17'52"E
L9	88.84	N14°17'52"E
L10	16.97	S14°15'00"E
L11	9.74	N59°17'52"E
L12	90.65	N14°17'52"E
L13	11.40	N59°17'52"E
L14	151.57	S80°53'56"E
L15	17.65	N09°06'04"E
L16	163.10	N52°23'48"E
L17	214.50	S01°36'05"E
L18	220.91	S01°36'05"E
L19	6.17	N52°23'48"E
L20	33.99	S37°36'12"E
L21	10.00	S52°23'48"W
L22	33.99	S37°36'12"E
L23	178.23	N52°23'48"E
L24	63.09	S09°06'04"W
L25	43.15	N40°09'13"W
L26	8.50	S49°50'47"W
L27	15.00	N40°09'13"W
L28	8.50	S49°50'47"W
L29	112.18	N40°09'13"W
L30	10.00	S58°40'26"E
L31	25.46	S31°48'12"W
L32	22.21	S31°48'12"W

CURVE TABLE						
CURVE	LENGTH	RADIUS	TANGENT	CHORD BEARING	CHORD	DELTA
C7	119.06	138.50	63.49	S15°31'35"E	115.43	49°15'13"



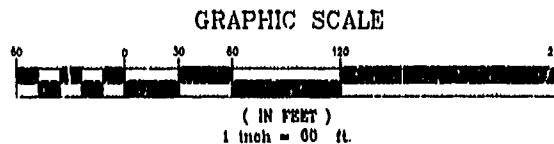
NOTE:
PROPOSED J.C.S.A. EASEMENTS ARE BASED UPON
PROPOSED LOCATIONS OF INDICATED UTILITIES AND DO
NOT REFLECT ACTUAL LOCATIONS.

PLAT OF PARCELS A & B
BEING A SUBDIVISION OF
PROPERTY OF
CMM PROPERTIES, L.L.C.
BERKELEY DISTRICT
JAMES CITY COUNTY, VIRGINIA
DATE: 01/31/00 SCALE: 1"=80'
SHEET 2 OF 2

Williamsburg/James City County
10:41 AM
Recorded 2000 May 2000
DOCUMENT 00000 8099
Sally J. Webb, Esq.

N 3628000.01
E 11994899.16

PLAT RECORDED
P.B. NO 72 PAGE 43



LANDMARK
DESIGN GROUP
Engineers • Planners • Surveyors
Landscape Architects • Environmental Consultants

4029 Ironbound Road
Suite 100
Williamsburg, VA 23188
Tel. (757) 253-2975
Fax (757) 229-0049
Email: lmdg@landmarkdj.com

5544 Greenwich Road
Suite 200
Virginia Beach, VA 23462
Tel. (757) 473-2000
Fax (757) 497-7933
Email: lmdg@landmarkdj.com

DRAWN BY: PF
CHKD. BY: NHM
PROJ. NO.: 1180057-000.12
DWG. NO.: 110281AW

1:SECT-C02.12 TOWN/STATE PHYSICAL THERAPY FINAL SUBDIVISION PLAT TPT-SUBS-02.DWG