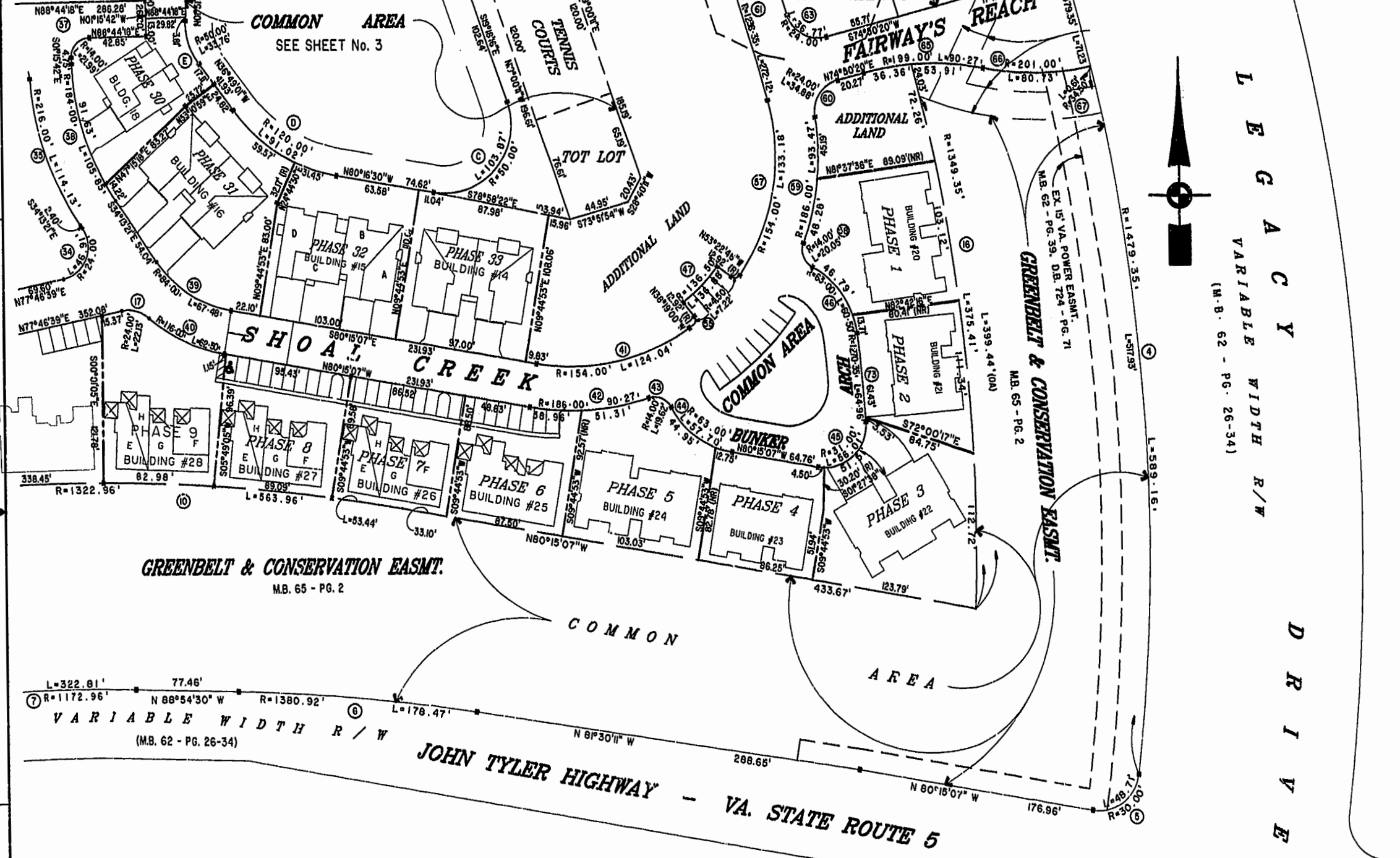


MATCH LINE SEE SHEET 4

MATCH LINE - SEE SHEET 3



LEGACY
 VARIABLE WIDTH R/W
 (M.B. 62 - PG. 26-34)

DRIVE



Winchester/James City County
 2:14 p.m.
 Recorded 19th day of April 2000
 DOCUMENT # 0000 2267
 Betty Suberling



EXHIBIT "A" PHASE 22
FAIRWAYS VILLAS
 AT
GREENSPRINGS, A CONDOMINIUM
 FOR
GREENSPRINGS DEVELOPMENT, L.C.
 BERKELEY DISTRICT JAMES CITY COUNTY, VIRGINIA

Hassell & Folkes, P.C. Engineers Surveyors Planners Chesapeake, VA. 23320 (757)547-9531	SIZE: C CONTRACT NO: 95-079	DISK/BOX: 61/16 REF. 10/13	FILENAME: FAIRWY22.DWG FWAYPLAT.DWG	REV.
SCALE: 1" = 60'	DATE: 01/28/00	SHEET 2 of 6		