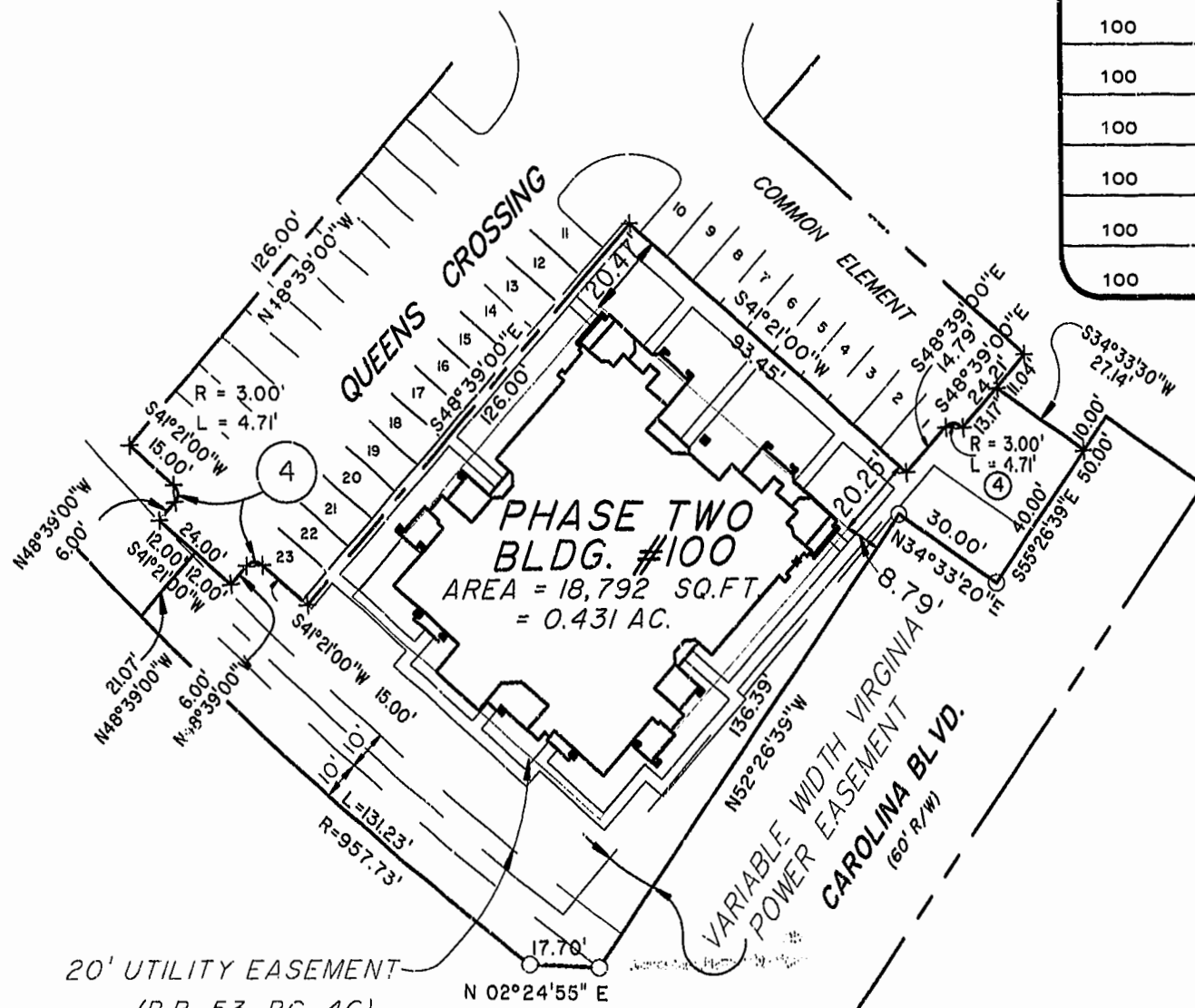


BLDG. NUMBER	UNIT NUMBER	UNIT TYPE	ADDRESS	PARKING SPACE NO.
100	1-101	AR	101 QUEENS CRESCENT	9
100	1-102	B	102 QUEENS CRESCENT	7
100	1-103	A	103 QUEENS CRESCENT	5
100	1-104	E	104 QUEENS CRESCENT	3
100	1-105	C	105 QUEENS CRESCENT	1
100	1-106	D	106 QUEENS CROSSING	23
100	1-107	F	107 QUEENS CROSSING	21
100	1-108	DR	108 QUEENS CROSSING	19
100	1-109	CR	109 QUEENS CROSSING	17
100	1-110	ER	110 QUEENS CROSSING	12



**EXHIBIT # 1 PHASE TWO**  
**LAFONTAINE CONDOMINIUMS**  
 AT  
**WILLIAMSBURG CROSSING**  
**PHASE TWO**  
 FOR

UNIVERSITY SQUARE ASSOCIATES

Williamsburg/James City County  
 Recorded 11:25 AM 29 day of March 2000  
 DOCUMENT # 000006323  
 Betsy B. Woolridge, Clerk of Circuit Court

FILE RECORDED IN  
 P.B. NO. 277 PAGE 4-7

Hassell & Polkes, P.C. Engineers Surveyors Planners Chesapeake, VA. 23320 (757)547-9531	JAMESTOWN DISTRICT	JAMES CITY COUNTY, VIRGINIA	SIZE C	CONTRACT NO C	DISK/BOX 48/14	FILENAME LF-P2.DWG	REV. REV.
SCALE: 1" = 30'		DATE: 04/11/97	SHEET 4 of 4				