

EXIST. 20' JAMES CITY COUNTY SERVICE AUTHORITY SAN. SEWER EASEMENT AS SHOWN IN AS-BUILT LOCATION. D.B. 141 - PG. 388



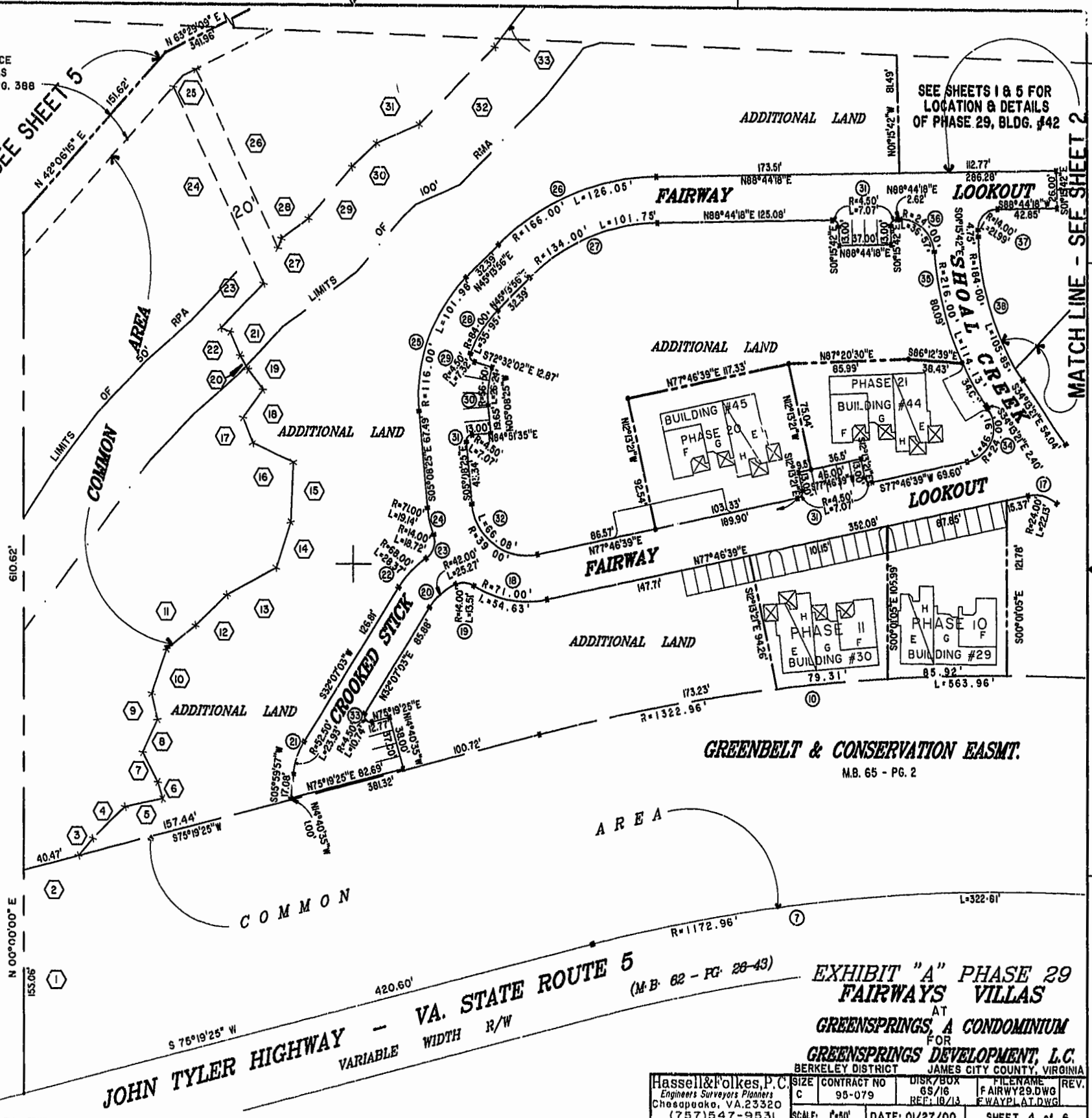
MATCH LINE - SEE SHEET 5

SEE SHEETS 1 & 5 FOR LOCATION & DETAILS OF PHASE 29, BLDG. #42

MATCH LINE - SEE SHEET 2

46-1-01-0-0001
"GREENSPRINGS PLANTATION"
(DB 322, PG 254)

Williamsburg/James City County
Recorded 24 day of March
DOCUMENT # 000025761 at 2:22 PM
S. J. ...



GREENBELT & CONSERVATION EASMT.
M.B. 65 - PG. 2

VA. STATE ROUTE 5
M.B. 62 - PG. 28-43
JOHN TYLER HIGHWAY - VARIABLE WIDTH R/W

EXHIBIT "A" PHASE 29
FAIRWAYS VILLAS
AT
GREENSPRINGS, A CONDOMINIUM
FOR
GREENSPRINGS DEVELOPMENT, L.C.
BERKELEY DISTRICT JAMES CITY COUNTY, VIRGINIA

Hassell & Folkes, P.C. Engineers Surveyors Planners Chesapeake, VA 23320 (757) 547-9531	SIZE C CONTRACT NO 95-079	DISK/BOX 65/16 REF: 18/13	FILENAME FAIRWAY29.DWG FWAYPLAT.DWG	REV.
SCALE: 1"=50'	DATE: 01/27/00	SHEET 4 of 6		