

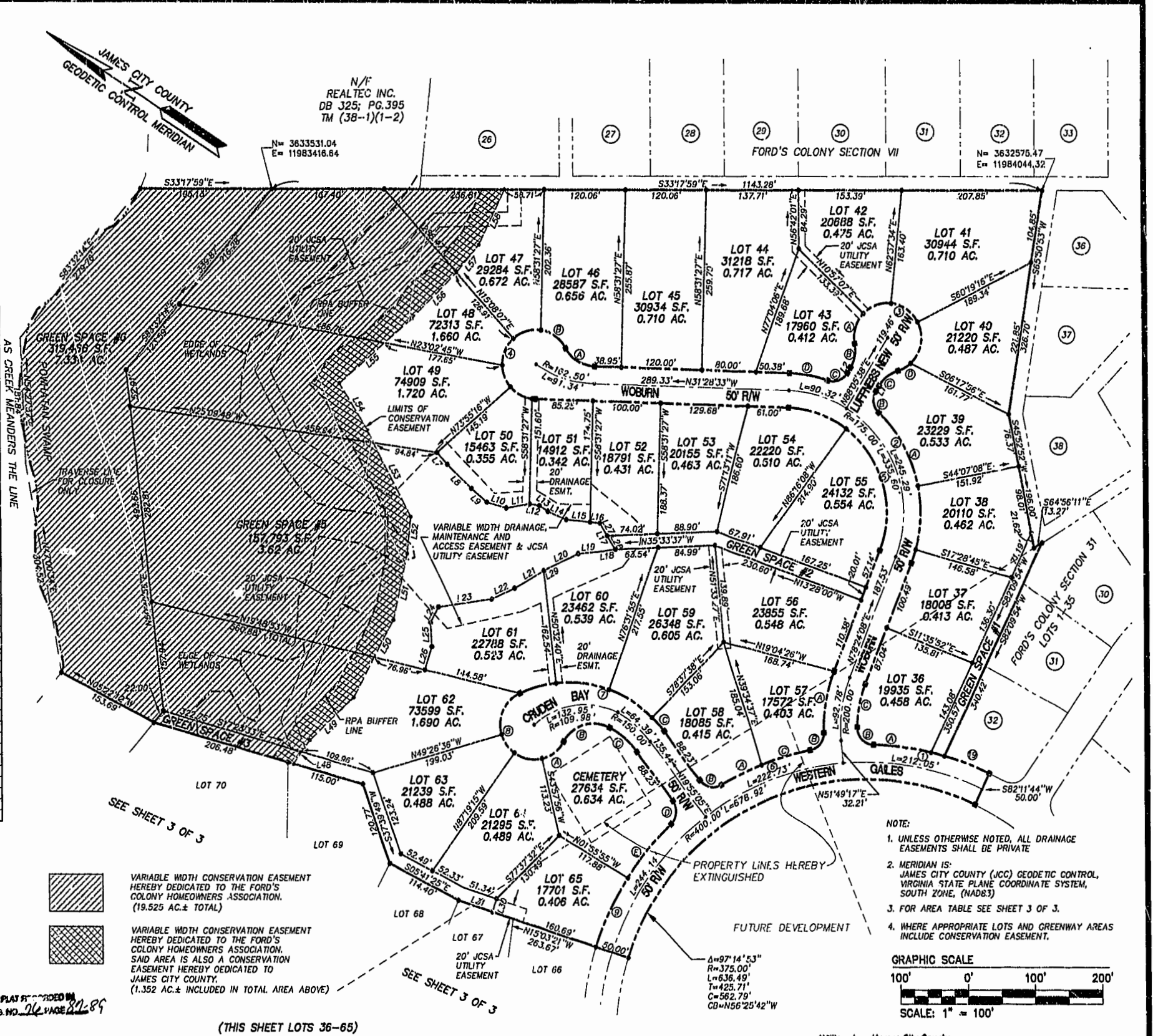
R/W#	DELTA	RADIUS	LENGTH	CHORD	TAN	CHORD BEARING
RW1	23°53'58"	425.00	177.28	176.00	89.95	N19°45'15"W
RW2	07°28'08"	200.00	235.51	222.14	133.58	N44°40'04"E
RW3	262°49'09"	50.00	229.35	75.00	56.69	N01°54'22"W
RW4	239°59'60"	50.00	209.41	86.60	86.60	S88°31'27"W
RW5	109°52'41"	150.00	287.66	245.56	213.74	S23°27'47"W
RW6	19°12'10"	425.00	142.44	141.77	71.89	N54°06'05"W
RW7	77°43'37"	175.00	237.40	219.61	141.02	N18°56'44"W
RW8	216°52'12"	50.00	189.25	94.87	150.00	S13°45'22"W
RW9	42°42'48"	425.00	316.83	309.55	166.19	S82°10'55"W
RW19	09°35'12"	425.00	71.11	71.03	35.64	N12°35'52"W

LOT#	DELTA	RADIUS	LENGTH	CHORD	TAN	CHORD BEARING
36A	11°33'59"	425.00	85.80	85.65	43.04	N25°55'15"W
36B	09°14'03"	25.00	38.94	35.12	24.67	N12°54'48"E
36C	20°52'19"	175.00	63.75	63.40	32.23	N67°57'59"E
37	05°52'53"	200.00	20.53	20.52	10.27	N79°27'42"E
38	26°38'23"	200.00	92.99	92.15	47.35	N59°12'03"E
39A	34°56'52"	200.00	121.99	120.11	62.98	N28°24'26"E
39B	77°09'37"	25.00	33.67	31.18	19.94	N49°30'49"E
39C	41°24'35"	50.00	36.14	35.36	18.90	S71°12'05"E
39D	25°20'24"	50.00	22.11	21.93	11.24	S63°09'60"E
40	74°29'04"	50.00	65.00	60.52	38.01	N66°55'16"E
41	57°03'10"	50.00	49.79	47.76	27.18	N01°09'09"E
42	51°40'27"	50.00	45.09	43.58	24.21	N53°12'40"W
43A	54°16'04"	50.00	47.36	45.61	25.62	S73°49'05"W
43B	41°24'35"	50.00	36.14	35.36	18.90	S67°23'20"W
43C	77°09'37"	25.00	33.67	31.18	19.94	N53°19'34"W
43D	16°43'48"	200.00	56.40	58.19	29.41	N23°06'39"W
46A	59°59'60"	50.00	32.36	50.00	28.87	N01°28'33"W
46B	53°37'34"	50.00	46.80	45.11	25.27	N01°42'39"E
47	49°45'46"	50.00	43.43	42.07	23.19	N49°59'00"W
48	49°45'21"	50.00	43.42	42.07	23.19	S80°15'27"W
49	39°18'02"	50.00	34.30	33.63	17.85	S36°43'45"W
50	42°06'21"	50.00	36.74	35.92	19.25	S04°58'26"E
51	05°26'52"	50.00	4.76	4.75	2.38	S28°45'05"E
54	35°12'22"	150.00	92.17	90.73	47.59	S13°52'22"E
55	74°40'19"	150.00	195.49	181.95	114.42	S41°03'59"W
57A	23°07'42"	225.00	90.82	90.21	46.04	S66°50'17"W
57B	80°13'35"	25.00	35.01	32.21	21.06	N84°36'47"W
57C	10°16'46"	425.00	76.25	76.15	38.23	N49°38'23"W
58A	08°55'24"	475.00	66.19	66.12	33.16	N59°14'28"W
58B	83°37'14"	25.00	36.49	32.33	22.36	N21°53'33"W
58C	08°32'43"	175.00	26.10	26.08	13.07	N15°38'43"E
59	24°50'26"	175.00	75.87	75.28	38.54	N01°02'52"W
60	25°59'16"	175.00	79.37	78.70	40.38	N26°27'43"W
61	18°21'12"	175.00	56.06	55.02	28.27	N48°37'56"W
62	81°30'04"	50.00	71.24	65.36	43.19	S81°22'26"W
63	37°52'39"	50.00	33.05	32.46	17.16	S21°37'05"W
64	48°42'49"	50.00	42.51	41.24	22.64	S21°40'40"E
CEM.A	48°38'40"	50.00	42.45	41.19	22.67	S70°21'24"E
CEM.B	90°00'00"	50.00	78.54	70.71	50.00	S49°40'44"E
CEM.C	24°35'48"	125.00	53.66	53.24	27.25	S07°37'10"W
CEM.D	83°37'14"	25.00	36.49	33.33	22.36	S61°43'42"W
CEM.E	13°43'22"	425.00	101.79	101.54	51.14	N83°19'22"W
65	14°52'07"	425.00	110.29	109.91	55.46	S82°22'53"W

GS#	DELTA	RADIUS	LENGTH	CHORD	TAN	CHORD BEARING
GS1	02°44'47"	425.00	20.37	20.37	10.19	N18°45'52"W

NUMBER	BEARING	DISTANCE	NUMBER	BEARING	DISTANCE
L1	N88°05'38"E	8.94'	L48	S88°28'48"E	41.85'
L2	S88°05'38"W	8.94'	L49	S76°07'21"E	89.81'
L7	S16°20'53"W	22.91'	L50	N84°40'12"E	126.69'
L8	S10°13'60"W	50.00'	L51	N69°01'11"E	98.01'
L9	S07°50'24"W	30.00'	L52	N62°52'21"E	53.37'
L10	S17°13'49"E	30.00'	L53	N29°37'45"E	139.84'
L11	S43°00'09"E	35.00'	L54	N26°01'38"E	79.19'
L12	S22°58'53"E	14.42'	L55	S74°14'41"E	142.78'
L13	S00°26'42"E	15.00'	L56	S78°15'22"E	93.87'
L14	S10°22'13"E	30.00'	L57	S83°14'56"E	52.30'
L15	S27°02'39"E	35.00'	L58	N82°37'50"E	88.23'
L16	S28°24'22"E	15.00'			
L17	S26°47'10"W	43.85'			
L18	N40°58'17"W	25.00'			
L19	N38°56'59"W	30.00'			
L20	N58°35'09"W	50.00'			
L21	N6°32'08"W	56.67'			
L22	N57°28'27"W	38.00'			
L23	N41°47'27"W	80.00'			
L24	S84°08'37"W	25.00'			
L25	S53°59'51"W	34.69'			
L26	S73°59'17"W	35.00'			
L27	S26°47'10"W	21.27'			
L28	S26°47'10"W	22.58'			
L29	N63°32'08"W	6.9'			
L30	S74°56'39"W	20.00'			
L31	N15°03'21"W	92.98'			

LOT	SQUARE FEET	ACRES
GS #1	6,774	0.155
GS #2	7,772	0.178
GS #3	12,118	0.278
GS #4	11,516	0.264
GS #5	157,793	3.622
GS #6	319,466	7.334



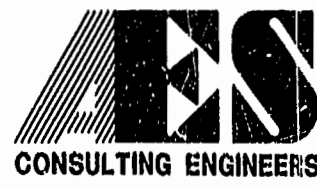
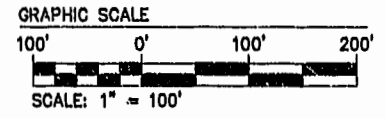
PLAT RECORDED IN  
P.B. NO. 26 PAGE 21-89

VARIABLE WIDTH CONSERVATION EASEMENT  
HEREBY DEDICATED TO THE FORD'S  
COLONY HOMEOWNERS ASSOCIATION.  
(19,525 AC.± TOTAL)

VARIABLE WIDTH CONSERVATION EASEMENT  
HEREBY DEDICATED TO THE FORD'S  
COLONY HOMEOWNERS ASSOCIATION.  
SAID AREA IS ALSO A CONSERVATION  
EASEMENT HEREBY DEDICATED TO  
JAMES CITY COUNTY.  
(1,352 AC.± INCLUDED IN TOTAL AREA ABOVE)

(THIS SHEET LOTS 36-65)

- NOTE:
- UNLESS OTHERWISE NOTED, ALL DRAINAGE EASEMENTS SHALL BE PRIVATE
  - MERIDIAN IS: JAMES CITY COUNTY (JCC) GEODETIC CONTROL, VIRGINIA STATE PLANE COORDINATE SYSTEM, SOUTH ZONE, (NAD83)
  - FOR AREA TABLE SEE SHEET 3 OF 3.
  - WHERE APPROPRIATE LOTS AND GREENWAY AREAS INCLUDE CONSERVATION EASEMENT.



5248 Olde Towne Road, Suite 1  
Williamsburg, Virginia 23188  
(757) 253-0040  
Fax (757) 220-8994

PLAT OF SUBDIVISION AND LOT LINE EXTINGUISHMENT  
SECTION XXXI  
LOTS 36-81  
FORD'S COLONY  
@ WILLIAMSBURG

BERKELEY DISTRICT JAMES CITY COUNTY VIRGINIA



No.	DATE	REVISION / COMMENT / NOTE	BY
1	2/8/00	REVISED CONSERVATION AREA PER J.C.C. COMMENTS	JFS

Designed	Drawn
CAH/DPW	PWM
Scale	Date
1"=100'	1/10/2000
Project No.	5652-31
Drawing No.	2 OF 3