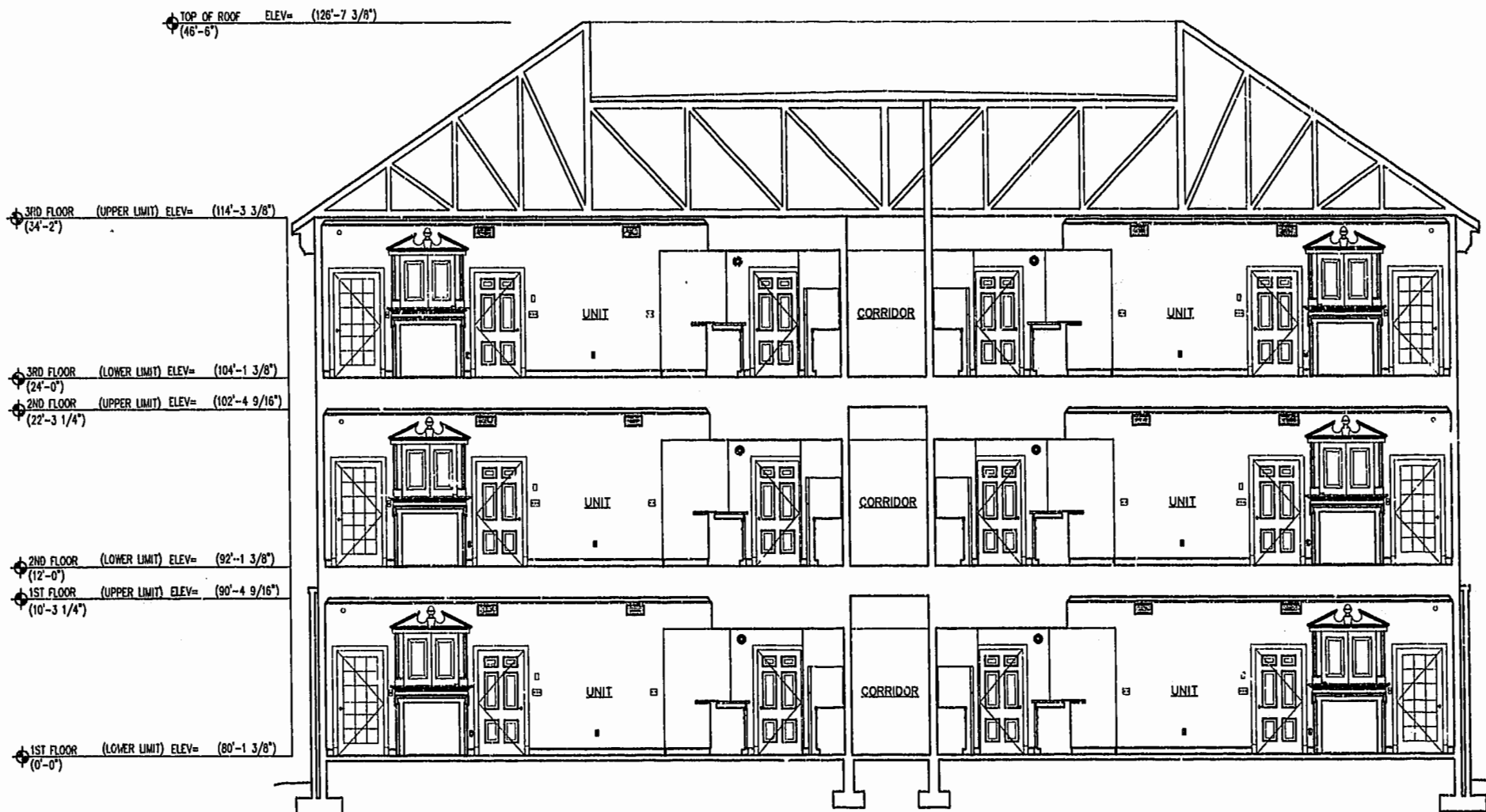


NOTE:
COMMON ELEMENTS ARE NOT YET COMPLETED.

NOTE:
ALL BUILDING DIMENSIONS AND DETAILS SHOWN
ARE PER PLANS BY CMSS ARCHITECTS, P.C.



TYPICAL BUILDING SECTION (NOT TO SCALE)

NOTES: *

1. THE LOWER (HORIZONTAL) BOUNDARY OF EACH UNIT IN BUILDING 2000 SHOWN ON THE PLAT AS LOCATED ON PHASE VIII IS THE HORIZONTAL PLANE OF THE UPPER SURFACE OF THE FLOOR SLAB OR CONCRETE FLOOR TOPPING OF THE UNIT.
2. THE UPPER (HORIZONTAL) BOUNDARY OF EACH OF THE UNITS IN BUILDING 2000 SHOWN ON THE PLAT AS LOCATED ON PHASE VIII IS THE HORIZONTAL PLANE(S) OF THE LOWER SURFACE OF THE FLOOR JOISTS (OR, IN THE CASE OF THIRD FLOOR UNITS, THE LOWER SURFACE OF THE BOTTOM CHORD OF THE ROOF TRUSSES) CONSTITUTING A PART OF THE CEILING OF THE UNIT.

* SEE NINTH AMENDMENT TO DECLARATION OF CONDOMINIUM OF MANOR CLUB AT FORD'S COLONY, A CONDOMINIUM (PHASE VIII CONDOMINIUM AGREEMENT) FOR A MORE DETAILED DESCRIPTION.

CERTIFICATION FOR PLANS

"THE UNDERSIGNED, A LICENSED LAND SURVEYOR, DOES HEREBY CERTIFY THAT THESE PLANS (AS SUBMITTED BY CMSS ARCHITECTS, P.C., REVISION DATE MAY 5, 1999) DEPICT IMPROVEMENTS TO BE CONSTRUCTED (BUT WHICH ARE NOT YET COMPLETED) AND, IF THE IMPROVEMENTS ARE CONSTRUCTED IN ACCORDANCE WITH THESE PLANS, THESE PLANS CONFORM TO THE REQUIREMENTS OF VA. CODE ANN. SUBSECTIONS 55-79.58 B AND F IN SO FAR AS THEY RELATE TO CHARACTERISTICS OF THE CONDOMINIUM TO BE DEPICTED ON SUCH PLANS. UNITS AND COMMON ELEMENTS DEPICTED HEREON ARE NOT NOT YET COMPLETED; IT BEING UNDERSTOOD THAT SUCH UNITS ARE BEING SUBJECTED TO A TIME-SHARE INSTRUMENT PURSUANT TO VA. CODE ANN. SECTION 55-387 AND THUS VA. CODE ANN. SUBSECTION 55-79.58 D APPLIES."

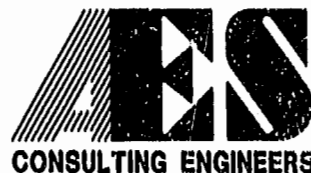


A. D. Sebert
A. D. SEBERT, L.S. 10/20/99
DATE

EXHIBIT A-3

PLAT OF CONDOMINIUM
MANOR CLUB
AT FORD'S COLONY
PHASE VIII

OWNER/DEVELOPER: MARRIOTT OWNERSHIP RESORTS, INC.
POWhatan DISTRICT JAMES CITY COUNTY VIRGINIA



5248 Old Towne Road, Suite 1
Williamsburg, Virginia 23188
(757) 253-0040
Fax (757) 220-8994

PLAT RECORDED IN	Recorded	day of	2000
P.L. NO.	76	67	76
DOCUMENT NO.	00003530		
No.	DATE	REVISION / COMMENT / NOTE	BY

Designed	Drawn
ADS	JFS
Scale	Date
NOTED	10/20/99
Project No.	7739-11
Drawing No.	10 OF 10

7739MC10.DWG 11.16.99-10:27 JFS