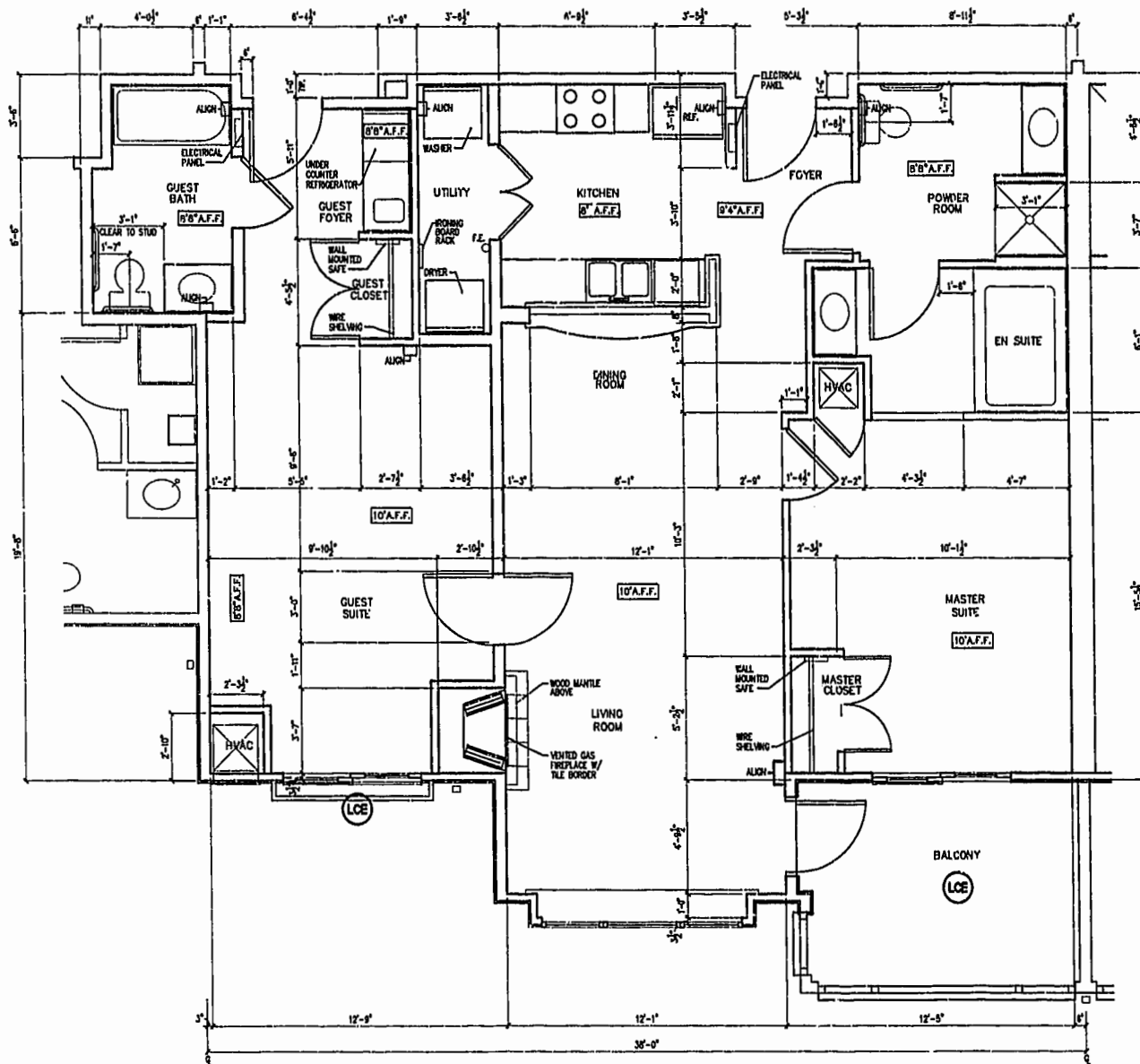


NOTE:  
ALL BUILDING DIMENSIONS AND DETAILS SHOWN  
ARE PER PLANS BY CMSS ARCHITECTS, P.C.

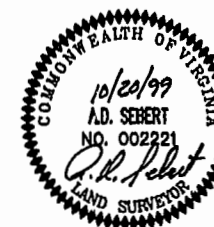
NOTE:  
COMMON ELEMENTS ARE NOT YET COMPLETED.



- CE COMMON ELEMENT
- LCE LIMITED COMMON ELEMENT
- A.F.F. ABOVE FINISH FLOOR

SPECIAL UNIT FLOOR PLAN

UNIT NO.  
2203



○ SPECIAL UNIT PLAN  
(NOT TO SCALE)

**CERTIFICATION FOR PLANS**

I, THE UNDERSIGNED, A LICENSED LAND SURVEYOR, DOES HEREBY CERTIFY THAT THESE PLANS (AS SUBMITTED BY CMSS ARCHITECTS, P.C., REVISION DATE MAY 5, 1999) DEPICT IMPROVEMENTS TO BE CONSTRUCTED (BUT WHICH ARE NOT YET COMPLETED) AND, IF THE IMPROVEMENTS ARE CONSTRUCTED IN ACCORDANCE WITH THESE PLANS, THESE PLANS CONFORM TO THE REQUIREMENTS OF VA. CODE ANN. SUBSECTIONS 55-79.58 B AND F IN SO FAR AS THEY RELATE TO CHARACTERISTICS OF THE CONDOMINIUM TO BE DEPICTED ON SUCH PLANS. UNITS AND COMMON ELEMENTS DEPICTED HEREON ARE NOT NOT YET COMPLETED; IT BEING UNDERSTOOD THAT SUCH UNITS ARE BEING SUBJECTED TO A TIME-SHARE INSTRUMENT PURSUANT TO VA. CODE ANN. SECTION 55-367 AND THUS VA. CODE ANN. SUBSECTION 55-79.58 D APPLIES."

*A.D. Sebert*  
A. D. SEBERT, L.S.      10/20/99  
DATE

**NOTES:**

1. THE LOWER (HORIZONTAL) BOUNDARY OF EACH UNIT IN BUILDING 2000 SHOWN ON THE PLAT AS LOCATED ON PHASE VIII IS THE HORIZONTAL PLANE OF THE UPPER SURFACE OF THE FLOOR SLAB OR CONCRETE FLOOR TOPPING OF THE UNIT.
2. THE UPPER (HORIZONTAL) BOUNDARY OF EACH OF THE UNITS IN BUILDING 2000 SHOWN ON THE PLAT AS LOCATED ON PHASE VIII IS THE HORIZONTAL PLANE(S) OF THE LOWER SURFACE OF THE FLOOR JOISTS (OR, IN THE CASE OF THIRD FLOOR UNITS, THE LOWER SURFACE OF THE BOTTOM CHORD OF THE ROOF TRUSSES) CONSTITUTING A PART OF THE CEILING OF THE UNIT.

\* SEE NINTH AMENDMENT TO DECLARATION OF CONDOMINIUM OF MANOR CLUB AT FORD'S COLONY, A CONDOMINIUM (PHASE VII CONDOMINIUM AGREEMENT) FOR A MORE DETAILED DESCRIPTION.

7739MCP7.DWG

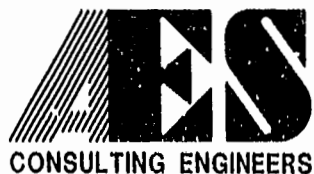
11.16.99-10:21

JFS

**EXHIBIT A-3**

**PLAT OF CONDOMINIUM  
MANOR CLUB  
AT FORD'S COLONY  
PHASE VIII**

OWNER/DEVELOPER: MARRIOTT OWNERSHIP RESORTS, INC.  
POWhatan DISTRICT      JAMES CITY COUNTY      VIRGINIA



5248 Olde Towne Road, Suite 1  
Williamsburg, Virginia 23188  
(757) 253-0040  
Fax (757) 220-8994

PLAT RECORDED IN	Recorded <u>22</u> day of <u>Feb</u> , 2000		
P.B. NO. <u>72</u>	DOCUMENT <u>100008730</u>		
<i>Original Architects</i>			
No.	DATE	REVISION / COMMENT / NOTE	BY

Designed ADS	Drawn JFS
Scale	Date
NOTED 10/20/99	
Project No. 7739-11	
Drawing No. 7 OF 10	