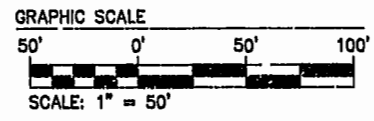
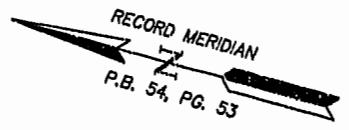
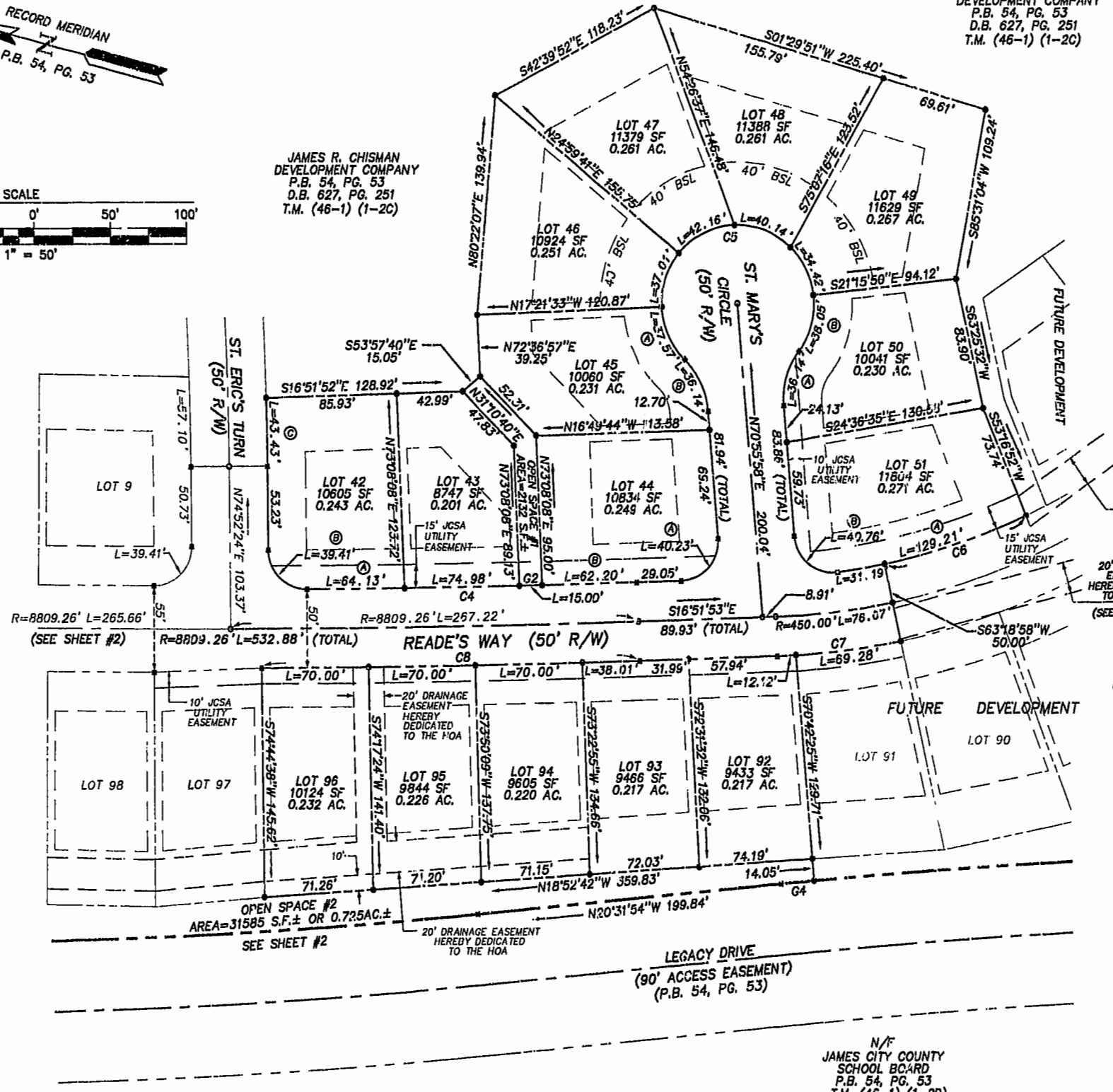


JAMES R. CHISMAN  
DEVELOPMENT COMPANY  
P.B. 54, PG. 53  
D.B. 627, PG. 251  
T.M. (46-1) (1-2C)



JAMES R. CHISMAN  
DEVELOPMENT COMPANY  
P.B. 54, PG. 53  
D.B. 627, PG. 251  
T.M. (46-1) (1-2C)



**LOT CURVE TABLE**

LOT	DELTA	RADIUS	LENGTH	TANGENT	CHORD	CHL. BEAR
42A	00°25'06"	8784.26	64.13	32.07	64.13	N15°39'46"W
42B	90°19'36"	25.00	39.41	25.14	35.46	N29°42'35"E
42C	00°59'08"	2520.00	43.43	21.72	43.43	N74°22'50"E
43	00°29'21"	8784.26	74.98	37.49	74.98	N16°07'00"W
44A	02°12'09"	25.00	40.23	25.98	36.03	N62°37'57"W
44B	00°24'21"	8784.26	62.20	31.10	62.20	N16°39'43"W
45A	43°03'15"	50.00	37.57	19.72	36.69	S51°03'01"W
45B	41°24'34"	50.00	36.14	18.90	35.36	S50°13'41"W
46	42°24'52"	50.00	37.01	19.40	36.17	N86°12'55"W
47	48°18'22"	50.00	42.15	22.42	40.92	N40°51'19"W
48	45°55'59"	50.00	40.14	21.22	39.07	N06°17'52"E
49	39°20'39"	50.00	34.42	17.92	33.74	N49°01'09"E
50A	41°24'34"	50.00	36.14	18.90	35.36	S88°21'45"E
50B	43°36'06"	50.00	38.05	20.00	37.14	S89°27'31"E
51A	17°25'10"	425.00	120.21	65.11	128.72	N31°11'18"W
51B	93°24'41"	25.00	40.76	26.53	36.39	N24°13'38"E
91	01°27'43"	475.00	12.12	6.06	12.12	S17°35'45"E
91	00°14'47"	8834.26	38.01	19.00	38.01	S16°44'29"E
91	00°27'14"	8834.26	70.00	35.00	70.00	S16°23'20"E
91	00°27'14"	8834.26	70.00	35.00	70.00	S15°56'14"E
91	00°27'14"	8834.26	70.00	35.00	70.00	S15°29'59"E

NOTE:  
OPEN SPACE #2 TO BE A FUTURE  
CONSERVATION EASEMENT TO  
JAMES CITY COUNTY.

NOTE:  
HOA-JAMESTOWN HUNDRED  
HOMEOWNER'S ASSOCIATION

JAMES R. CHISMAN  
DEVELOPMENT COMPANY  
P.B. 54, PG. 53  
D.B. 627, PG. 251  
T.M. (46-1) (1-2C)

**RIGHT OF WAY CURVE TABLE**

NUMBER	DELTA	RADIUS	LENGTH	TANGENT	CHORD	CH. BEAR
C4	01°24'39"	8784.26	216.31	108.17	216.32	N16°09'33"W
C5	262°49'09"	50.00	229.35	---	75.00	S19°04'02"E
C6	13°12'51"	425.00	98.02	49.23	97.80	N33°17'27"W
C7	09°49'09"	475.00	81.40	40.80	81.30	N21°46'27"W
C8	01°36'31"	8834.26	248.01	124.01	248.00	N16°03'38"W
C9	01°24'03"	8836.76	216.03	108.02	216.03	N14°05'57"W

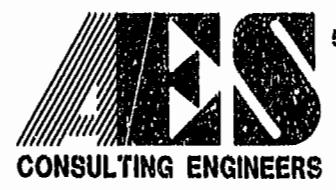
**OPEN SPACE CURVE TABLE**

NUMBER	DELTA	RADIUS	LENGTH	TANGENT	CHORD	CH. BEAR
G2	00°05'52"	8784.26	15.00	7.50	15.00	N16°24'36"W
G4	00°16'52"	4437.99	21.78	10.89	21.78	N20°23'28"W

N/F  
JAMES CITY COUNTY  
SCHOOL BOARD  
P.B. 54, PG. 53  
T.M. (46-1) (1-2D)

12:04 PM  
Recorded 4 day of February 2002  
DOCUMENT # 00002235  
PLAT RECORDED IN P.D. NO. 71 PAGE 53-56  
Clerk

12.21.99-14:13 62017P04-DWG JFS



2548 Olde Towne Road, Suite 1  
Williamsburg, Virginia 23188  
(757) 253-0040  
Fax (757) 220-8994

PLAT OF SUBDIVISION  
LOTS 1-9, 42-51, 92-105  
JAMESTOWN HUNDRED  
OWNED BY  
JAMES R. CHISMAN DEVELOPMENT COMPANY  
BERKELEY DISTRICT JAMES CITY COUNTY VIRGINIA



No.	DATE	REVISION / COMMENT / NOTE	BY
3	1/31/00	REV. TO SHOW 20' UTILITY ESMT. (WATERLINE EASEMENT)	JFS
2	12/20/99	REVISED PER JAMES CITY COUNTY COMMENTS	JFS
1	11/11/99	REVISED PER JAMES CITY COUNTY COMMENTS	JFS

Designed	Drawn
SOV	JFS
Scale	Date
1" = 50'	1/14/99
Project No.	6201-7
Drawing No.	3 OF 4