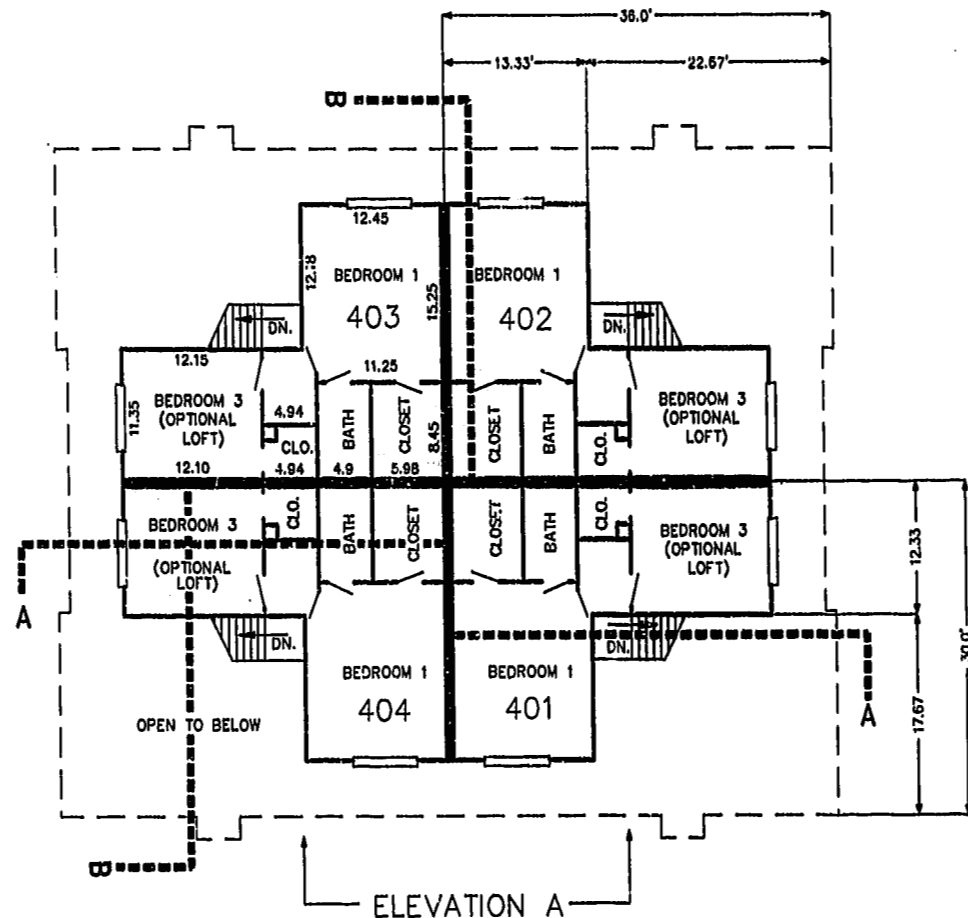


FIRST FLOOR PLAN
(UNIT #403 IS TYPICAL)



SECOND FLOOR PLAN
(UNIT #403 IS TYPICAL)



ELEVATION A



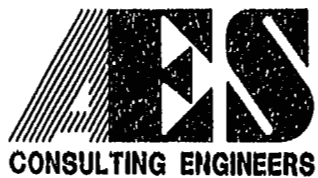
ELEVATION B

9:22AM
Recorded... 21 day 2/21/2000
DOCUMENT # 000094
John A. Williams, Clerk

MAP RECORDED BY
FIG NO. 76 PAGE 24-39

09.01.99-11.36 8395PH55.dwg

JFS



5248 Olde Towne Road, Suite 1
Williamsburg, Virginia 23188
(757) 253-0040
Fax (757) 220-8994

PLAT OF CONDOMINIUM
WESTGATE AT WILLIAMSBURG,
A CONDOMINIUM
PHASE FIVE
OWNED BY: 752 L.L.C.,
A VIRGINIA LIMITED LIABILITY COMPANY
CITY OF WILLIAMSBURG VIRGINIA



No.	DATE	REVISION / COMMENT / NOTE	BY

Designed GTW/ADS	Drawn JFS
Scale 1" = 10'	Date 8/27/99
Project No. 8395-6	
Drawing No. 5 OF 6	