

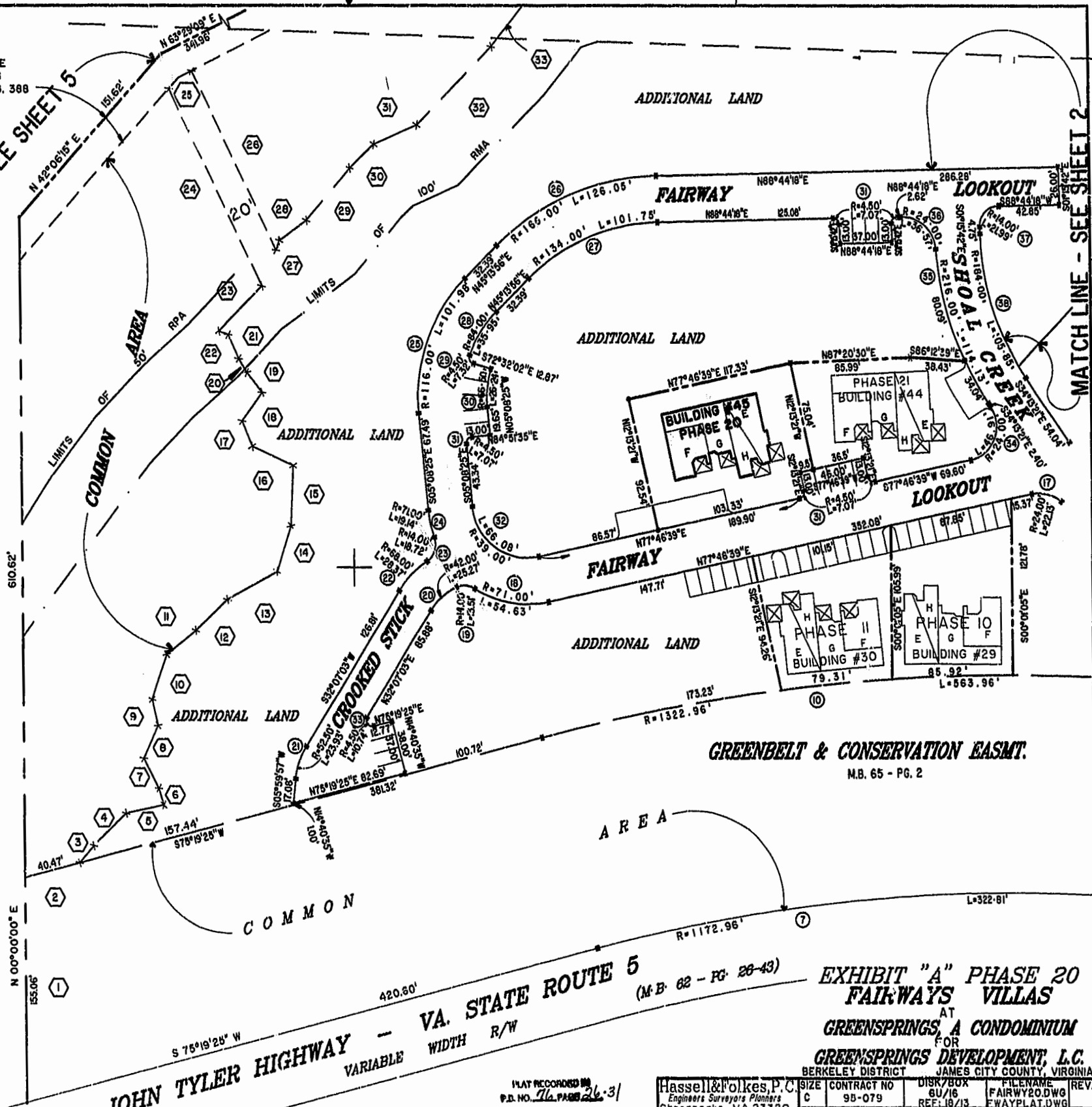
EXIST. 20' JAMES CITY COUNTY SERVICE AUTHORITY SAN. SEWER EASEMENT AS SHOWN IN AS-BUILT LOCATION. D.B. 141 - PG. 388



MATCH LINE - SEE SHEET 5

MATCH LINE - SEE SHEET 2

46-1-01-0-0001
"GREENSPRINGS PLANTATION"
(DB 322, PG 254)



GREENBELT & CONSERVATION EASMT.
M.B. 65 - PG. 2

JOHN TYLER HIGHWAY - VA. STATE ROUTE 5
VARIABLE WIDTH R/W
S 75°19'25" W 420.50'



11:24 AM
DOCUMENT # 1003 1003 2003
C:\work\1003 1003 2003

PLAT RECORDED IN
P.B. NO. 76 PAGE 26-31

Hassell & Folkes, P.C.
Engineers Surveyors Planners
Chesapeake, VA. 23320
(757)547-9531

EXHIBIT "A" PHASE 20 FAIRWAYS VILLAS AT GREENSPRINGS, A CONDOMINIUM FOR GREENSPRINGS DEVELOPMENT, L.C. BERKELEY DISTRICT JAMES CITY COUNTY, VIRGINIA			
SIZE	CONTRACT NO	DISK/BOX	FILENAME
C	95-079	6U/16	FAIRWAY20.DWG
SCALE:	DATE:	REV.	
1"=80'	01/10/00		
			SHEET 4 of 6