

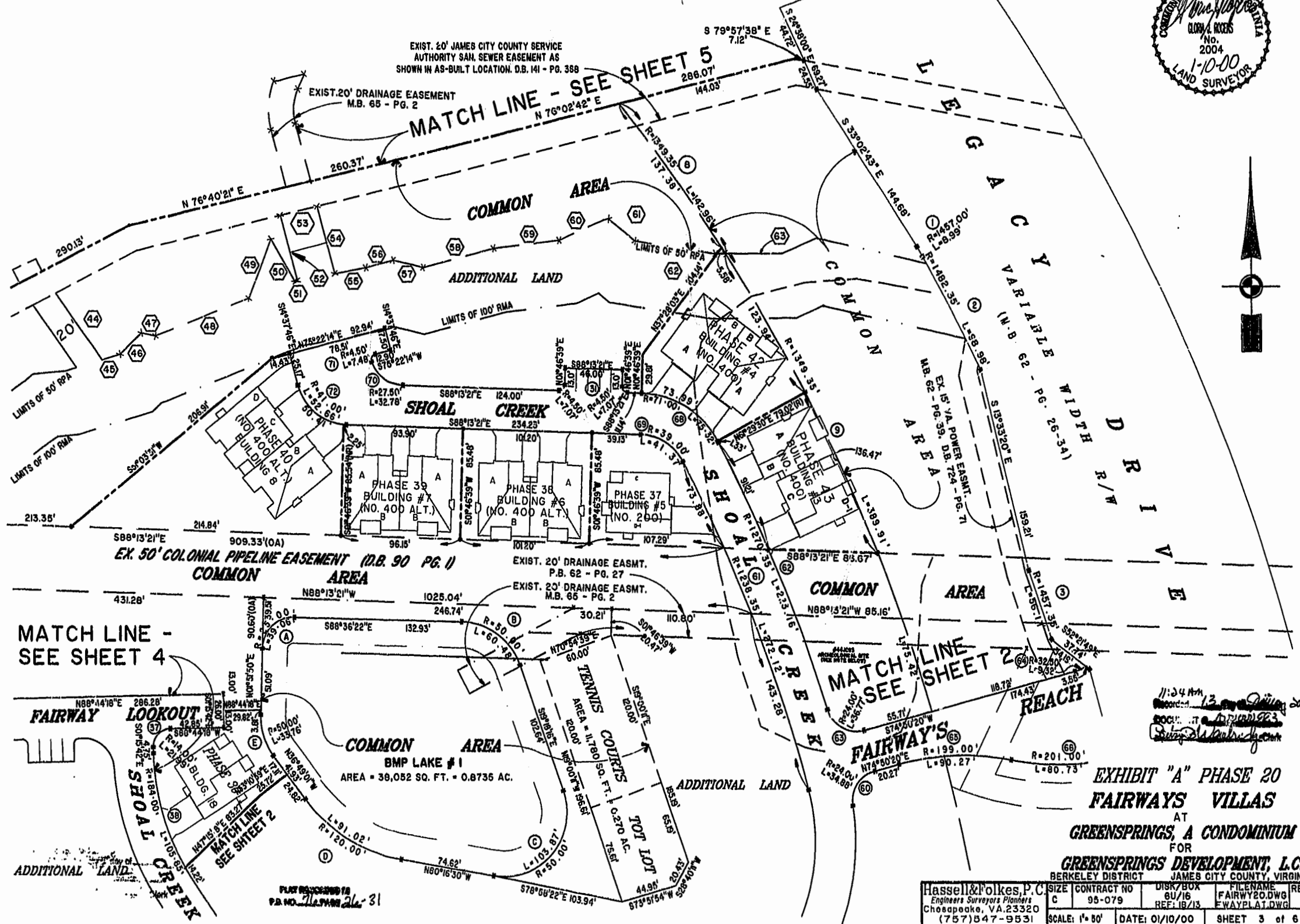
"GREENSPRINGS PLANTATION"  
46-1-01-D-1001

(08 322, PG 254)

EXIST. 20' JAMES CITY COUNTY SERVICE  
AUTHORITY SAN. SEWER EASEMENT AS  
SHOWN IN AS-BUILT LOCATION. D.B. 141 - PG. 388

EXIST. 20' DRAINAGE EASEMENT  
M.B. 65 - PG. 2

MATCH LINE - SEE SHEET 5  
286.07'  
144.03'



EX. 50' COLONIAL PIPELINE EASEMENT (D.B. 90 PG. 1)  
COMMON AREA

EXIST. 20' DRAINAGE EASMT.  
P.B. 62 - PG. 27  
EXIST. 20' DRAINAGE EASMT.  
M.B. 65 - PG. 2

MATCH LINE -  
SEE SHEET 4

MATCH LINE  
SEE SHEET 20

COMMON AREA  
BMP LAKE # 1  
AREA = 38,052 SQ. FT. = 0.8735 AC.

EXHIBIT "A" PHASE 20  
FAIRWAYS VILLAS  
AT  
GREENSPRINGS, A CONDOMINIUM  
FOR  
GREENSPRINGS DEVELOPMENT, L.C.  
BERKELEY DISTRICT JAMES CITY COUNTY, VIRGINIA

Hassell & Folkes, P.C. Engineers Surveyors Planners Chesapeake, VA 23320 (757) 547-9531	SIZE CONTRACT NO C 95-079	DISK/BOX 6U/16 REF: 18/13	FILENAME FAIRWAY20.DWG EWAYPLA1.DWG	REV. SCALE: 1"=80' DATE: 01/10/00 SHEET 3 of 6
--	------------------------------	---------------------------------	---	---

PLAN RECORDED IN  
P.B. NO. 71-15-11-31

11:34 AM  
13  
ROCK...  
Surveyed by...